



Lanadron Close, TW7

£1,875 Per calendar month

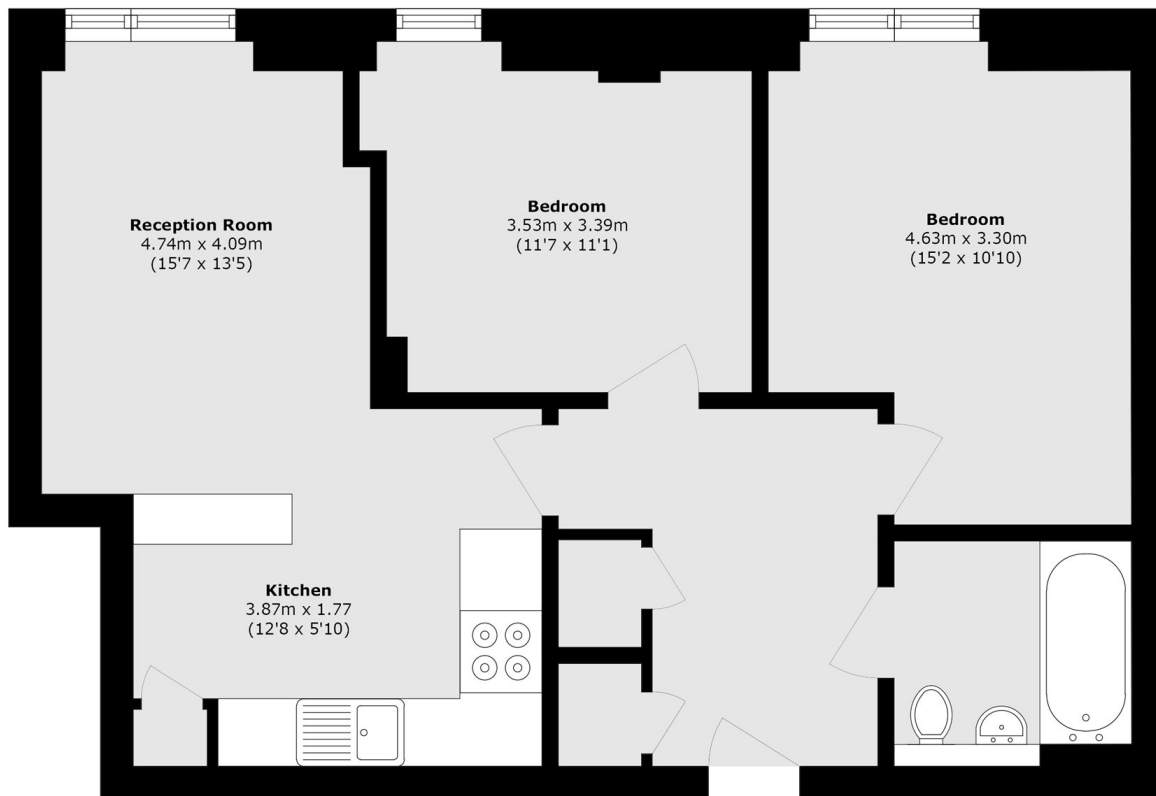
A modernised two-bedroom apartment featuring a bright open-plan kitchen and reception with stylish breakfast bar, contemporary bathroom, well-proportioned bedrooms, wood flooring and excellent natural light, set within a well-maintained development.

Ideally positioned in Isleworth, moments from shops, Primrose Park and Isleworth Station with direct trains to London Waterloo, the property offers easy access to St Margarets, Richmond and Twickenham via nearby London Road connections conveniently.

Features

- Two Bedrooms
- Open-Plan Living
- Modern Bathroom
- Stylish Breakfast Bar
- Wood Flooring Throughout
- Central Location

Lanadron Close, Isleworth, TW7



Total area (approx.): 63.9 sq. m (687.8 sq. ft)