

Approximate total area*
418.95'
38.7 m²

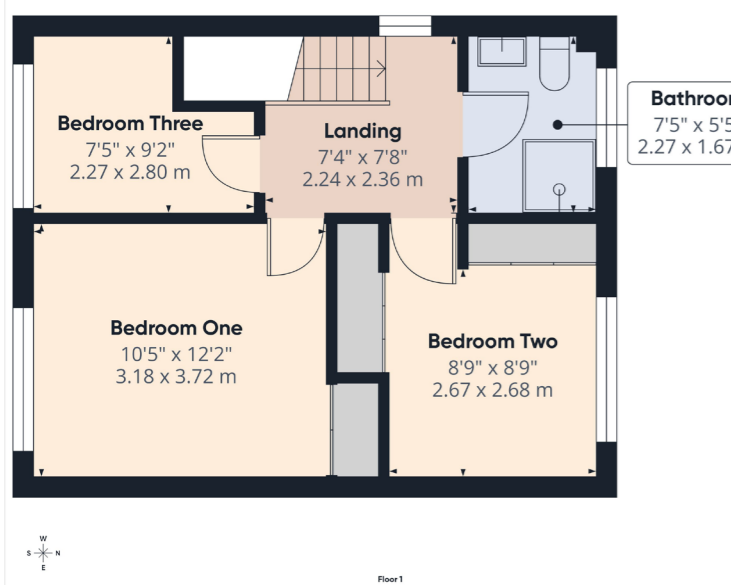
Reduced headroom
1'10"
0.1 m²

(1) Excluding balconies and terraces

Reduced headroom
Below 5'10" to 5 m

Calculations reference the BCS:PM05
"30 Standard" Measurements and are
approximate and not to scale. This
Floor plan is intended for illustration
only.

DIRAFPE360



Approximate total area*
389.65'
36.3 m²

(1) Excluding balconies and terraces

Calculations reference the BCS:PM05
"30 Standard" Measurements and are
approximate and not to scale. This
Floor plan is intended for illustration
only.

DIRAFPE360



Guide Price
£217,500

**Pine Lodge, Main Street,
Skipsea, YO25 8SJ**

Score	Energy rating	Current	Potential
92+	A		
81-91	B		
69-80	C		72 C
55-68	D		
39-54	E	54 E	
21-38	F		
1-20	G		

SERVICES
Oil fired central heating. Understood to all be connected to mains water and electric.

TENURE
The property is Freehold and offered with the benefit of vacant possession upon completion.

COUNCIL TAX
Council Tax is payable to the East Riding of Yorkshire Council. The property is currently shown as listed in Council Tax Band 'C'.

VIEWING
Strictly by appointment with the sole agents on 01377 241919.

FREE VALUATION
If you are looking to sell your own property, we will be very happy to provide you with a free, no obligation market appraisal and valuation. We offer very competitive fees and an outstanding personal service that is rated 5 star by our fully verified past clients.



56 Market Place, Driffield | 01377 241919 | www.dee-atkinson-harrison.co.uk

Disclaimer: Dee Atkinson & Harrison for themselves and for the vendors or lessors of this property, whose Agents they are, give notice that these particulars are produced in good faith, are set out as a general guide only and do not constitute any part of a Contract. No person in the employment of Dee Atkinson & Harrison has any authority to make any representation or warranty whatever in relation to this property.

Dee Atkinson & Harrison



THE ACCOMMODATION COMPRISES:

ENTRANCE HALL

Door and window to the front aspect, coving, stairs leading to the first floor landing, understairs cupboard and additional storage cupboard, vinyl flooring, radiator and power points.

LOUNGE- 11'10 (3.62m) x 14'6 (4.42m)

Cosy living area with bay window to the front aspect, coving, open fireplace with surround and tiled hearth, vinyl flooring, radiator, TV point and power points.

OPEN PLAN KITCHEN/DINING AREA- 8'8 (2.64m) x 8'1 (2.47m)/8'10 (2.71m) x 8'0 (2.46m)

A spacious area with door to the side aspect, sliding doors and window to the rear aspect, coving, panelled walls, oak splash back, a range of wall and base units with solid oak worktop, one and a half sink with drainer unit, space for fridge/freezer, plumbing for washing machine, built in microwave, Beko Range cooker with splash back, extractor fan, wood effect laminated flooring and power points.

FIRST FLOOR LANDING

Window to the side aspect, coving, fitted carpets and power points. There is also access to the loft which has a ladder, boarded out with power and lighting.

BEDROOM ONE- 10'5 (3.18m) x 12'2 (3.72m)

Window to the front aspect, coving, built in wardrobe, fitted carpets, radiator, TV point and power points.

BEDROOM TWO- 8'9 (2.67m) x 8'9 (2.68m)

Window to the rear aspect, coving, built in wardrobes, fitted carpets, radiator and power points.

BEDROOM THREE- 7'5 (2.27m) x 9'2 (2.80m)

Window to the front aspect, coving, built in cupboards and wardrobe, fitted carpets, radiator and power points,

BATHROOM- 7'5 (2.27m) x 5'5 (1.67m)

Opaque window to the rear aspect, coving, partially tiled walls, three piece bathroom suite comprising:- low flush WC, sink with pedestal, shower cubicle with electric shower, vinyl flooring, radiator and extractor fan.

GARDEN

North facing garden which is a great size and is easily maintainable. There is artificial grass to the immediate rear of the property with timber garden shed benefitting from power and lighting. The additional sheds in the garden will be removed on completion and there is gated side access.

PARKING

There is gated off street parking for one/two cars.

Pine Lodge, Main Street, Skipsea, YO25 8SJ

DESCRIPTION

A fantastic opportunity to purchase a three bedroom detached house at a fantastic price! Pine Lodge has been modernised throughout by the current vendor to create a modern home. The property however still allows any potential buyer to put their own stamp on it and enjoys a sizeable rear garden. Internally also boasts a warm and cosy feel with its location being a prime place, just minutes away from the seaside. Viewings are essential!

The property briefly comprises:- entrance hall, lounge, open plan kitchen/dining area, first floor landing, three bedrooms, bathroom, rear garden and off street parking.

LOCATION

Skipsea is located some 5.5 miles to the north of Hornsea and about 8.5 miles to the south of Bridlington, the village has its own primary school, public house and shops, with a more comprehensive range of facilities readily available in Hornsea. Ideal for those wishing to live near the coast but still wanting to be within commuting distance of Bridlington, Beverley, Driffield and the City of Hull.

