



**OVER 60?**

Secure this property  
for up to **59% less!**

**Guide Price**  
**£250,000**

**Freehold**

2x  1x  1x 

**Tonbridge Road,  
Maidstone, Kent ME16**

**Wards**  
Helping you move forwards





## Main features

- **Stunning Victorian house**
- **Versatile loft room with neutral decor**
- **Large rear garden, perfect for entertaining**
- **Prime location for commuting, a short distance to the town, stations and motorways, double glazing and central heating**
- **Sought after catchment area, close to local schools, college and hospital**

## Accommodation

### GROUND FLOOR

Lounge: 12'0 x 11'11 (3.66m x 3.63m)  
Dining Area: 12'0 x 10'10 (3.66m x 3.30m)  
Kitchen: 15'0 x 7'0 (4.58m x 2.14m)

### FIRST FLOOR

Landing  
Bedroom 1: 15'0 x 12'0 (4.58m x 3.66m)  
Bedroom 2: 11'0 x 8'11 (3.36m x 2.72m)  
Bathroom: 9'11 x 6'11 (3.02m x 2.11m)

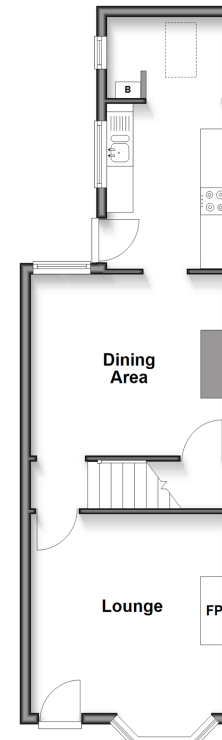
### SECOND FLOOR

Loft Room: 16'0 x 12'0 (4.88m x 3.66m)

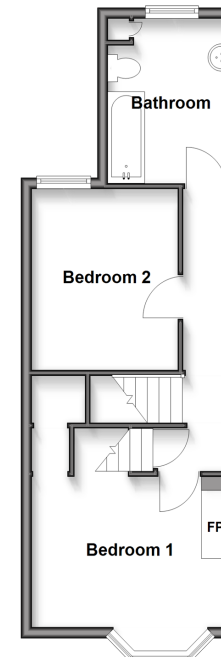
### OUTSIDE

Front Garden  
Rear Garden

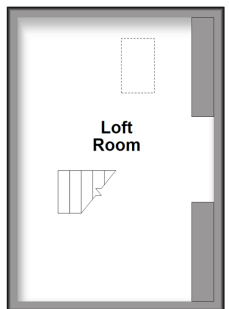
**Ground Floor**  
Approx. 40.9 sq. metres (440.6 sq. feet)



**First Floor**  
Approx. 37.3 sq. metres (401.5 sq. feet)



**Second Floor**  
Approx. 19.4 sq. metres (208.8 sq. feet)



**Call Maidstone - 01622 683737 ■ [wardsofkent.co.uk](http://wardsofkent.co.uk)**

■ Legal advice should be taken to verify fixtures/fittings, planning, alterations and/or lease details  
■ Through a Homewise Home For Life Plan people aged 60+ can secure this property for up to 50% less, by purchasing a Lifetime Lease.

■ Appliances & services are untested, dimensions are approximate and floor plans are not to scale



13158859/20251029/SS1/BUD1