



**Watling Court, Bedford Road, Houghton Regis, Dunstable,
LU5 5QS**

welcome to

Watling Court, Bedford Road, Houghton Regis, Dunstable

Spacious one bedroom apartment with private balcony, OPEN PLAN living/dining space and allocated parking. Situated within close proximity to local amenities and facility's this property is ideally situated for convenience. Perfect for a FIRST TIME BUY!

Entrance Porch

Door to the landing, storage cupboard and door to the entrance hall.

Entrance Hall

Storage cupboard with space for a washing machine and doors to the lounge/diner, bedroom and bathroom.

Lounge/Diner

TV point, wood laminate flooring, storage cupboard housing the central heating boiler and radiator. Space for a dining table and chairs and door to the kitchen. Double-glazed window to the side and double-glazed doors leading out to a balcony.

Kitchen

Fitted with a mix of wall and base units with work surface over, stainless steel sink with drainer and space for a cooker. Space for a fridge/freezer.

Bedroom

Fitted wardrobes with hanging space and storage, radiator and double-glazed window to the front.

Bathroom

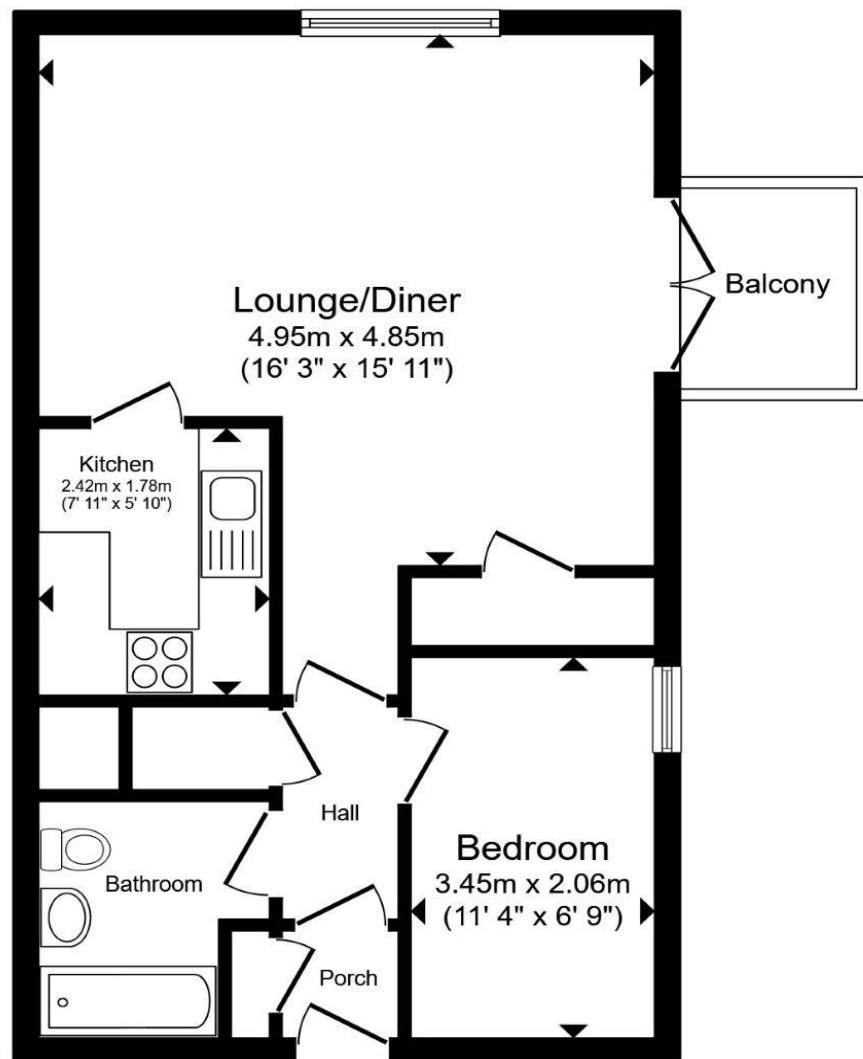
Partially tiled with a pedestal wash hand basin, low-level WC and a bath with mixer tap, shower over and attached shower screen. Radiator and extractor fan.

Outside Parking

One allocated parking space.

Garden

Access to communal gardens.



First Floor

Total floor area 47.2 m² (508 sq.ft.) approx

This floor plan is for illustrative purposes only. It is not drawn to scale. Any measurements, floor areas (including any total floor area), openings and orientation are approximate. No details are guaranteed, they cannot be relied upon for any purpose and they do not form part of any agreement. No liability is taken for any error, omission or misstatement. A party must rely upon its own inspection(s). Powered by www.propertybox.io



welcome to

**Watling Court, Bedford Road,
Houghton Regis, Dunstable**

- PERFECT FIRST TIME BUY
- GREAT LIVING/DINING SPACE
- BALCONY
- ALLOCATED PARKING
- CLOSE LOCAL SHOPS AND AMENITIES

Tenure: Leasehold EPC Rating: C

Council Tax Band: A Service Charge: 922.00

Ground Rent: 350.00

This is a Leasehold property with details as follows; Term of Lease 100 years from 24 Jun 2018. Should you require further information please contact the branch. Please Note additional fees could be incurred for items such as Leasehold packs.

guide price

£140,000



view this property online [brownandmerry.co.uk/Property/LBZ109650](https://www.brownandmerry.co.uk/Property/LBZ109650)



Property Ref:

LBZ109650 - 0003

1. MONEY LAUNDERING REGULATIONS Intending purchasers will be asked to produce identification documentation at a later stage and we would ask for your co-operation in order that there is no delay in agreeing the sale. 2. These particulars do not constitute part or all of an offer or contract. 3. The measurements indicated are supplied for guidance only and as such must be considered incorrect. Potential buyers are advised to recheck measurements before committing to any expense. 4. We have not tested any apparatus, equipment, fixtures or services and it is in the buyers interest to check the working condition of any appliances. 5. Where an EPC, or a Home Report (Scotland only) is held for this property, it is available for inspection at the branch by appointment. If you require a printed version of a Home Report, you will need to pay a reasonable production charge reflecting printing and other costs. 6. We are not able to offer an opinion either written or verbal on the content of these reports and this must be obtained from your legal representative. 7. Whilst we take care in preparing these reports, a buyer should ensure that his/her legal representative confirms as soon as possible all matters relating to title including the extent and boundaries of the property and other important matters before exchange of contracts.

Brown & Merry is a trading name of Sequence (UK) Limited which is registered in England and Wales under company number 4268443, Registered Office is Cumbria House, 16-20 Hockliffe Street, Leighton Buzzard, Bedfordshire, LU7 1GN. VAT Registration Number is 500 2481 05.


brown & merry



01525 372021



LeightonBuzzard@brownandmerry.co.uk



17 High Street, LEIGHTON BUZZARD,
Bedfordshire, LU7 1DT



[brownandmerry.co.uk](https://www.brownandmerry.co.uk)