



Harvest Lane

Thames Ditton, KT7 0NG

Guide Price £850,000

A beautifully presented 3-bedroom, 2-bathroom family townhouse, ideally situated within a highly sought-after private gated development in the heart of Thames Ditton village. This bright and airy home offers versatile living, perfect for modern family life, down-sizers, professionals, or investors. Benefitting access to a secluded rear garden, ideal for al fresco dining and entertaining. Harvest Lane is an unrivalled location, with the River Thames a short stroll away (0.2 miles) offering picturesque walks, excellent road links via the A3, easy access to local bus routes and train links that go directly to London Waterloo. Private road annual maintenance fee circa £2,200 per annum, includes estate gardening & maintenance, window cleaning, security, external painting of properties every 5 years. Further benefits from being offered to the market with no onward chain.

- 3 bedroom centrally-located townhouse
- Study
- Eat-in Kitchen
- Ensuite
- Off Street Parking with storage
- Utility Room
- Dual Aspect Living / Dining Room with Balconies
- Family Bathroom
- Private Garden
- Chain Free

Floor Plan

Harvest Lane

Approximate Gross Internal Area = 125.0 sq m / 1345 sq ft
(Including Outdoor Cupboard)

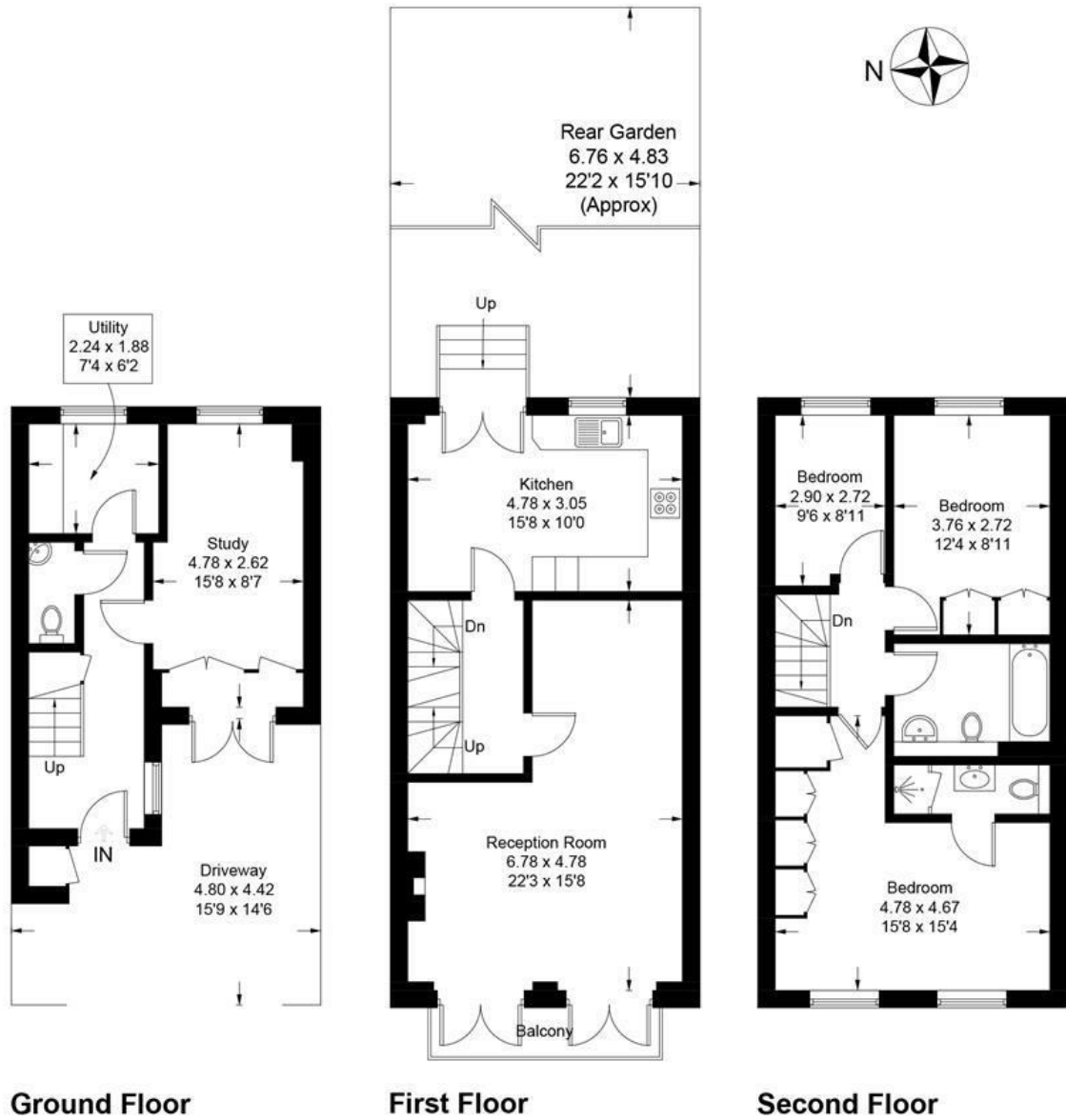
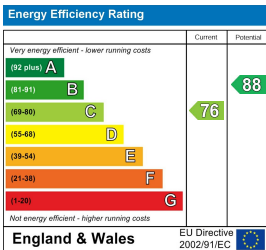


Illustration for identification purposes only, measurements are approximate, not to scale. Fourlabs.co © (ID1292501)

Energy Efficiency Graph



These particulars, whilst believed to be accurate are set out as a general outline only for guidance and do not constitute any part of an offer or contract. Intending purchasers should not rely on them as statements of representation of fact, but must satisfy themselves by inspection or otherwise as to their accuracy. No person in this firm's employment has the authority to make or give any representation or warranty in respect of the property.