



**OVER 60?**

Secure this property  
for up to **59% less!**

**Price**

**£420,000**

**Freehold**

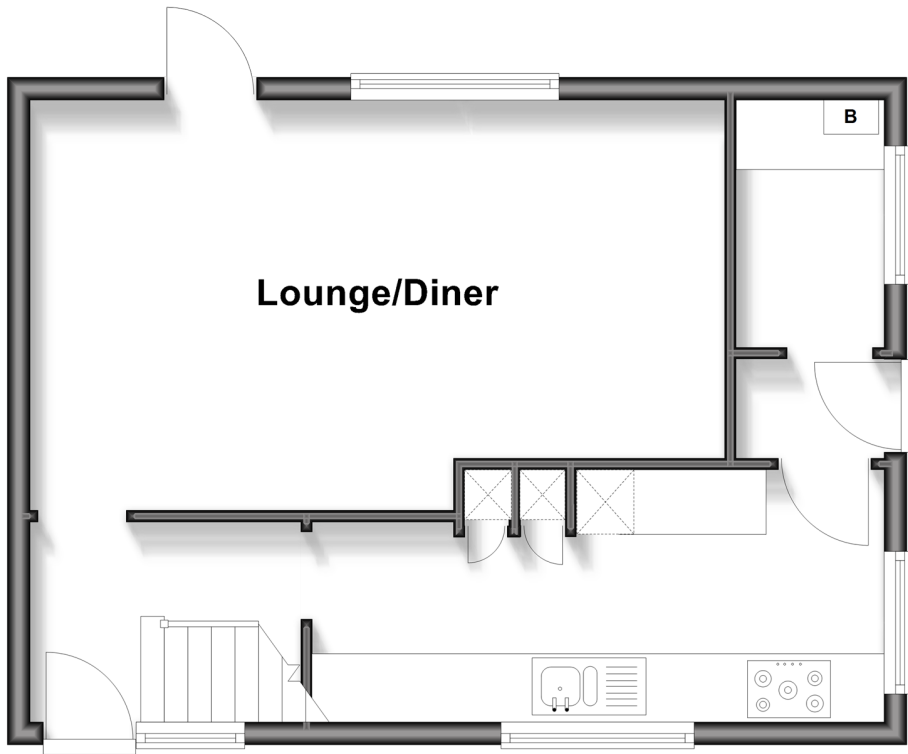
3x  1x  1x 

**Gossops Drive, Gossops  
Green, Crawley, West  
Sussex, RH11**

**cubitt & west**  
Helping you move forwards

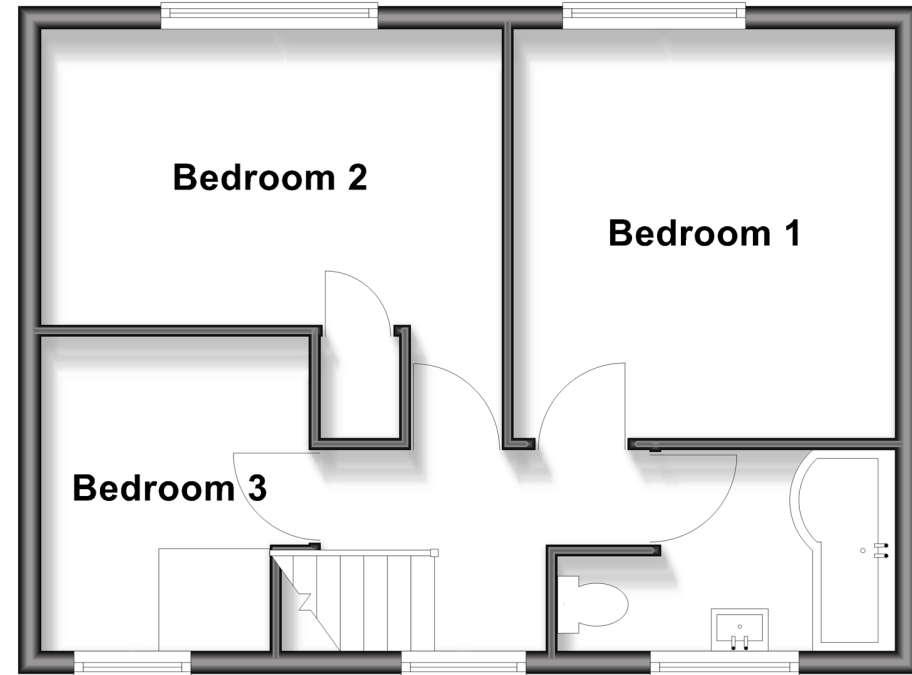
## Ground Floor

Approx. 40.8 sq. metres (439.5 sq. feet)



## First Floor

Approx. 40.8 sq. metres (439.5 sq. feet)



## Accommodation

### GROUND FLOOR

Entrance Hall

Kitchen : 16'6 x 7'5 (5.03m x 2.26m)

Inner Hallway

Utility Room: 7'3 x 4'2 (2.21m x 1.27m)

Lounge/Diner : 20'1 (6.13m) x 11'1 (3.38m)  
narrowing to 10'6 (3.20m)

### FIRST FLOOR

Landing

Bedroom 1: 12'0 x 11'1 (3.66m x 3.38m)

Bedroom 2: 13'3 x 8'10 (4.04m x 2.69m)

Bedroom 3 : 9'6 x 6'10 (2.90m x 2.08m)

Bathroom : 9'6 (2.90m) narrowing to 6'7  
(2.01m) x 6'0 (1.83m)

### OUTSIDE

Rear Garden

Driveway



## Main features

- Updated and improved end of terraced house
- Re-fitted kitchen with integrated appliances and re fitted bathroom suite
- Updated heating system and double glazing
- Large rear garden and driveway for three cars
- Short walk to local schools and Ifield Railway station

### Nearest Schools

Primary Schools: Gossops Green Primary 0.2 miles, Mill Primary, The 0.3 miles, St Margaret's CofE Primary 0.6 miles

Secondary Schools: St Wilfrid's School 0.3 miles

### Transport Information

Train Stations: Ifield 0.3 miles, Crawley 1.0 miles, Three Bridges 2.1 miles

### Address

Gossops Drive, Gossops Green, Crawley, West Sussex, RH11

### Directions

For directions to this property please contact us.



**cubitt&west**  
Helping you move forwards

Call Crawley Branch 01293 522233 ■ [cubittandwest.co.uk](http://cubittandwest.co.uk)



■ If buying to rent, please check if Local Authority licensing schemes apply before proceeding

■ Through a Homewise Home For Life Plan people aged 60+ can secure this property for up to 59% less, by purchasing a Lifetime Lease



20400G3A/20260523/SS/DC