



EDERLINE AVENUE, SW16

£750,000

- Semi-detached family home
- Five double bedrooms
- Off street parking
- Large garden & roof terrace
- Excellent condition throughout
- Energy rating: E





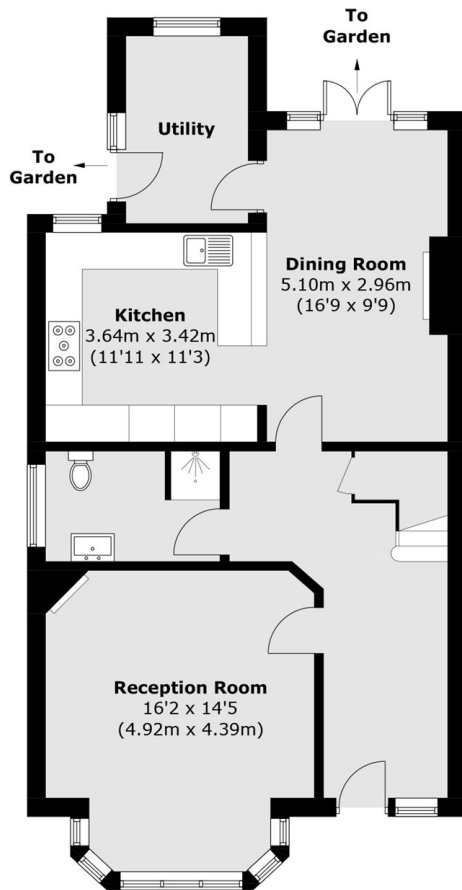
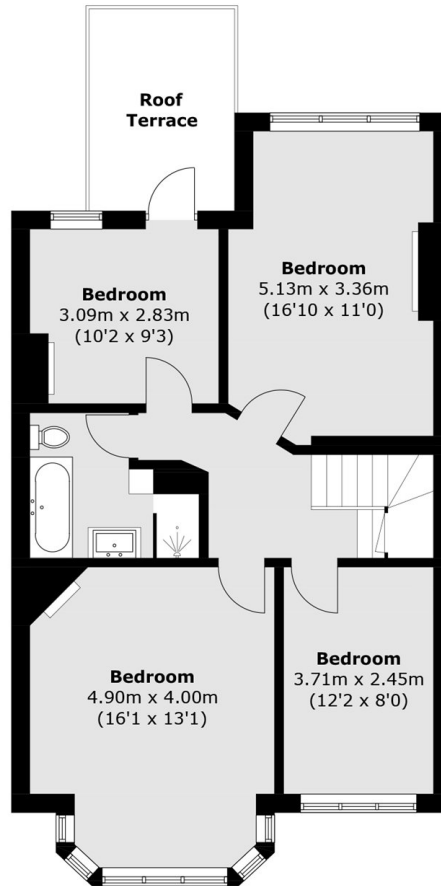
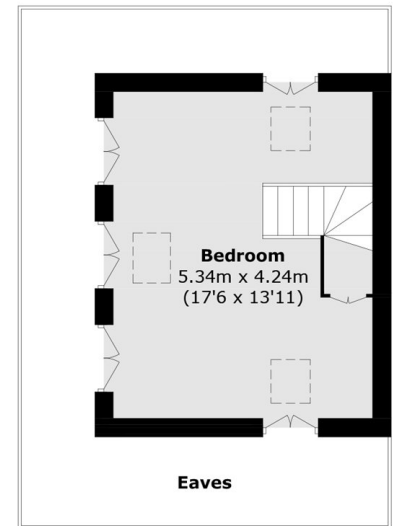
## ABOUT THE HOME

A large five bedroom semi-detached family home, presented in great condition and complete with new bespoke kitchen & bathrooms, off street parking, a large garden and a roof terrace.

Ederline Avenue is a leafy residential street positioned off of London Road. There are numerous nearby amenities, including gyms, supermarkets and a tennis court, as well as several independent pubs, cafés and restaurants. Norbury train station is nearby and is provides regular services into London Bridge and London Victoria.






**Ground Floor**

**First Floor**

**Second Floor**

Total area (approx.): 169 sq. m (1,819.2 sq. ft)  
(Excluding Eaves)

Roof Terrace: 7.8 sq. m (83.9 sq. ft)

**JACKSONS STREATHAM**

1-3 De Montfort Parade,  
Streatham High Road,  
Sales: 020 8487 3179  
Lettings: 020 8487 3180

Energy Rating: E We aim to make our particulars both accurate and reliable. However they are not guaranteed; nor do they form part of an offer or contract. If you require clarification on any points then please contact us, especially if you're traveling some distance to view. Please note that appliances and heating systems have not been tested and therefore no warranties can be given as to their good working order.