



## 91 Bourne Vale

, Bromley, BR2 7NW

Offers in excess of £600,000

A newly decorated and well-proportioned three-bedroom semi-detached house, ideally located on the popular Bourne Vale in Bromley. The property offers generous living space, excellent outdoor areas, and superb potential to extend (subject to planning permission).

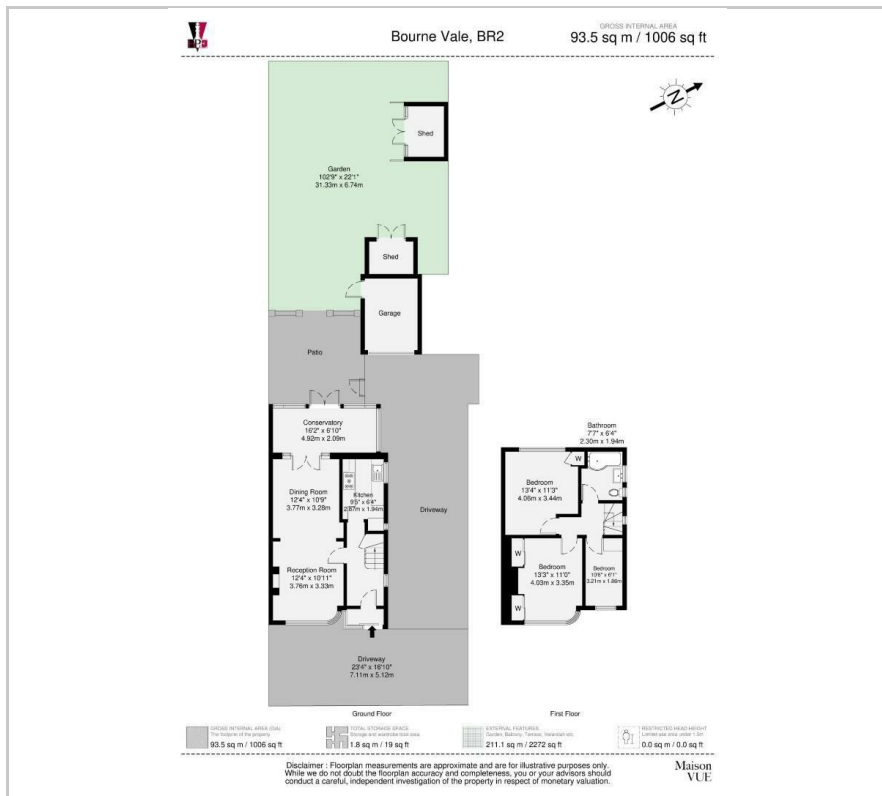
- Three bedroom semi detached house
- Potential to extend STPP
- Garage
- Off street parking
- Private garden
- Excellent transport links

### Viewing

Please contact our Chislehurst Office on 02034899589 if you wish to arrange a viewing appointment for this property or require further information.



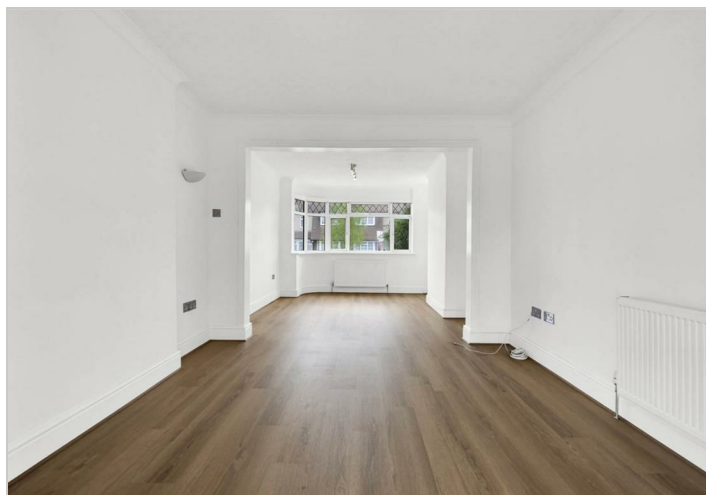
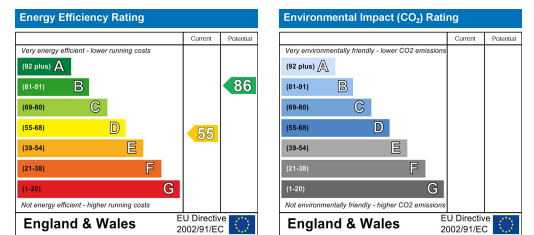
# Floor Plan



# Area Map



# Energy Efficiency Graph



These particulars, whilst believed to be accurate are set out as a general outline only for guidance and do not constitute any part of an offer or contract. Intending purchasers should not rely on them as statements of representation of fact, but must satisfy themselves by inspection or otherwise as to their accuracy. No person in this firm's employment has the authority to make or give any representation or warranty in respect of the property.