



Connells

Beams Way
Billericay

Beams Way
Billericay CM11 2NN

for sale guide price
£400,000



Property Description

****GUIDE PRICE £400,00 - £425,000**** This Previously extended three Double bedroom home is perfect for the growing family and sold with no onward chain. It offers a large living space with a study that would be perfect as a home office or a kids play room. Also downstairs a modern kitchen/breakfast room and a convenient downstairs w/c. The garden is a good size with an outbuilding that has power and lights. Upstairs offers three double bedrooms with a modern family bathroom.

The property is a close walk to local amenities, transport links and South Green Primary school.



Lounge

20' x 11' 8" (6.10m x 3.56m)

Kitchen

15' 1" x 11' 10" (4.60m x 3.61m)

Study

8' 9" x 8' 8" (2.67m x 2.64m)

Bedroom One

11' 7" x 10' 11" (3.53m x 3.33m)

Bedroom Two

8' 9" x 13' (2.67m x 3.96m)

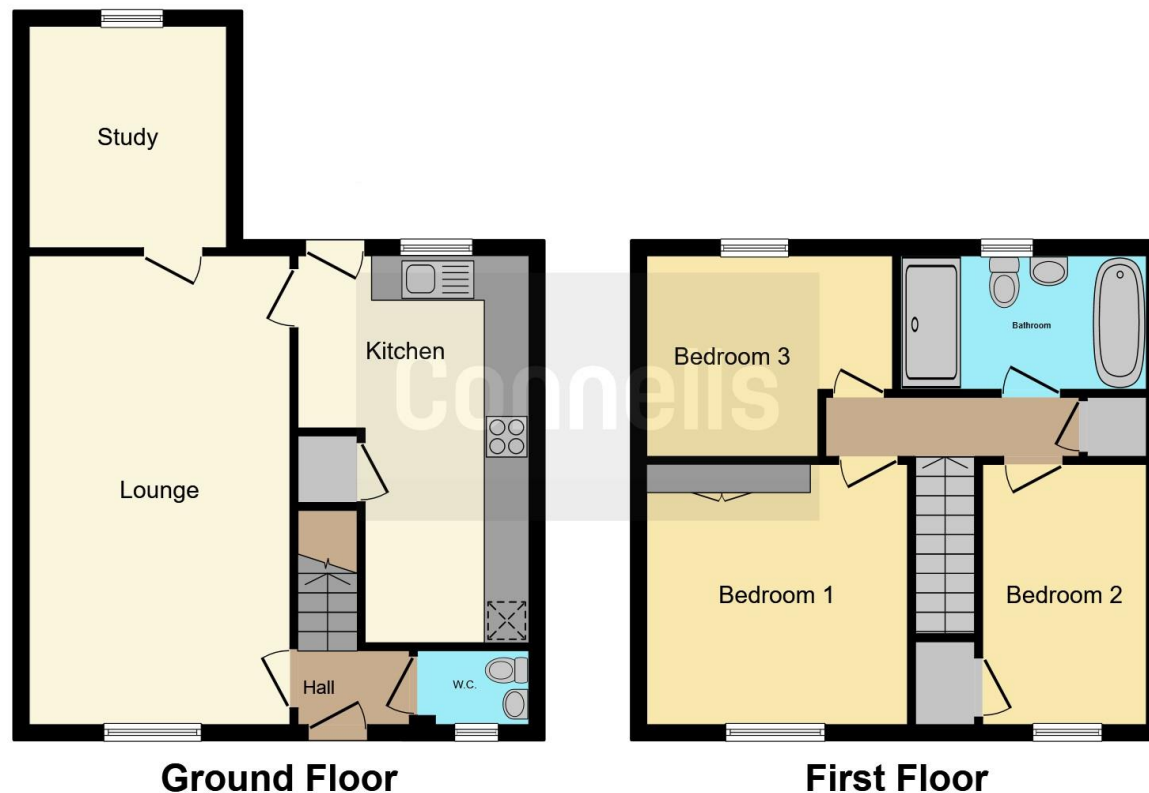
Bedroom Three

7' 5" x 11' (2.26m x 3.35m)









This floor plan is for illustrative purposes only. It is not drawn to scale. Any measurements, floor areas (including any total floor area), openings and orientation are approximate. No details are guaranteed, they cannot be relied upon for any purpose and they do not form part of any agreement. No liability is taken for any error, omission or misstatement. A party must rely upon its own inspection(s). Powered by www.focalagent.com

To view this property please contact Connells on

T 01277 655 555
E billericay@connells.co.uk

96 High Street
 BILLERICAY CM12 9BT

EPC Rating: C Council Tax
 Band: C

Tenure: Freehold

view this property online connells.co.uk/Property/BCY308148



1. MONEY LAUNDERING REGULATIONS Intending purchasers will be asked to produce identification documentation at a later stage and we would ask for your co-operation in order that there will be no delay in agreeing the sale. 2. These particulars do not constitute part or all of an offer or contract. 3. The measurements indicated are supplied for guidance only and as such must be considered incorrect. Potential buyers are advised to recheck measurements before committing to any expense. 4. We have not tested any apparatus, equipment, fixtures, fittings or services and it is in the buyers interest to check the working condition of any appliances.

Connells Residential is registered in England and Wales under company number 1489613, Registered Office is Cumbria House, 16-20 Hockliffe Street, Leighton Buzzard, Bedfordshire, LU7 1GN. VAT Registration Number is 500 2481 05.

See all our properties at www.connells.co.uk | www.rightmove.co.uk | www.zoopla.co.uk

Property Ref: BCY308148 - 0006