



SUMMERFIELD AVENUE, NW6

£2,300,000

Freehold
Four Double Bedrooms
Three Bathrooms & WC
Summer House/Garden Studio
Chain-Free
Prime Location

@marshandparsons
marshandparsons.co.uk

MARSH &
PARSONS

ABOUT THE PROPERTY

Set mid terrace is this captivating Victorian house arranged over three floors, with the addition of a summer house in the garden. The property includes high ceilings, has retained original features, flooded with natural light, and is located on a prime road in Queen's Park.

Summerfield Avenue is a quiet residential street, ideally located between the green open spaces of Queen's Park, and the shops and restaurants on the bustling Salusbury Road. Transport links include Queen's Park (Bakerloo & Overground) and Brondesbury Park (Overground).

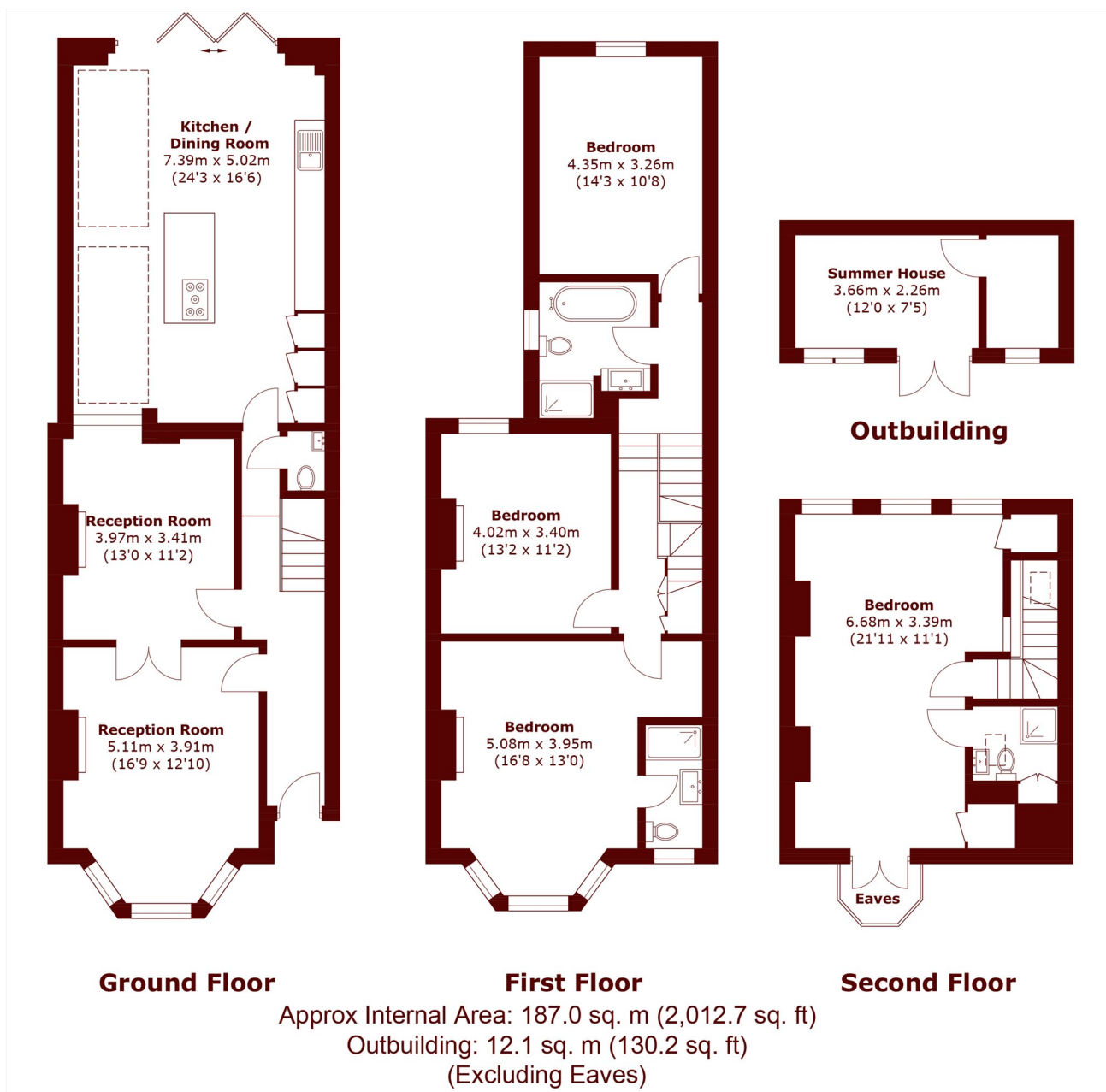








STEP INSIDE SUMMERFIELD AVENUE



Queen's Park
020 7624 4513

Energy Rating: C We aim to make our particulars both accurate and reliable. However, they are not guaranteed; nor do they form part of an offer or contract. If you require clarification on any points then please contact us, especially if you're traveling some distance to view. Please note that appliances and heating systems have not been tested and therefore no warranties can be given as to their good working order

**MARSH &
PARSONS**