



Apartment 1301 Bouchon Point 7 Cendal Crescent, London, E1 2FU
£795 Per Week



Apartment 1301 Bouchon Point 7 Cendal Crescent, London, E1 2FU

£795 Per Week

The Silk District is a new community in the heart of one of London's oldest areas. One tall tower and two lower-lying buildings connected by new streets and landscaping and first-class amenities.

Description



Situation

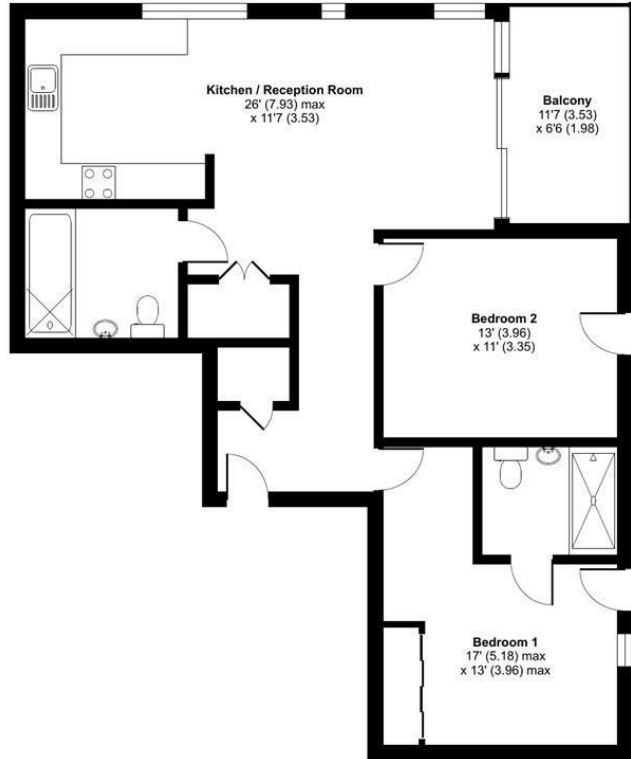


Furnished
Council Tax Band: F
Available: 1st August 2026

Floor Plans

Cendal Crescent, E1

Approximate Area = 867 sq ft / 80.5 sq m
For identification only - Not to scale

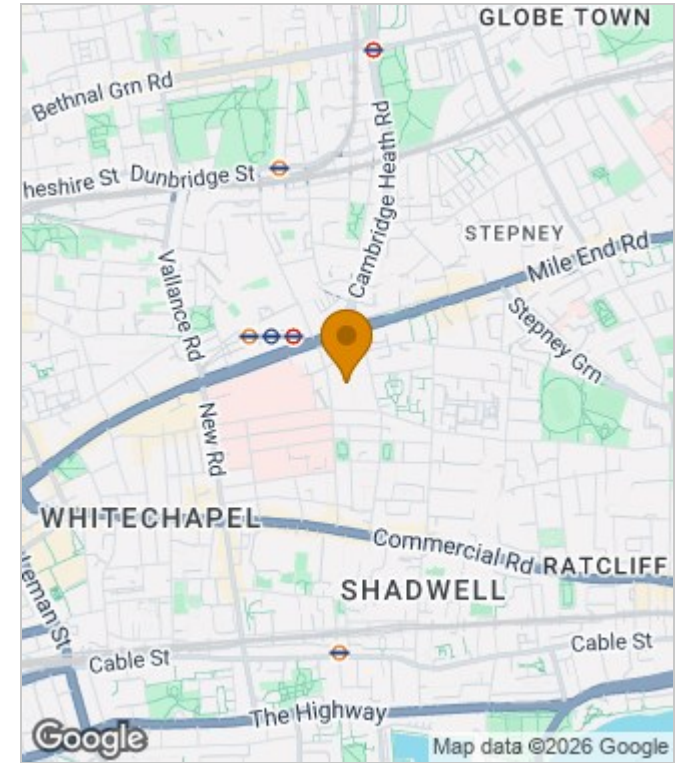


THIRTEENTH FLOOR

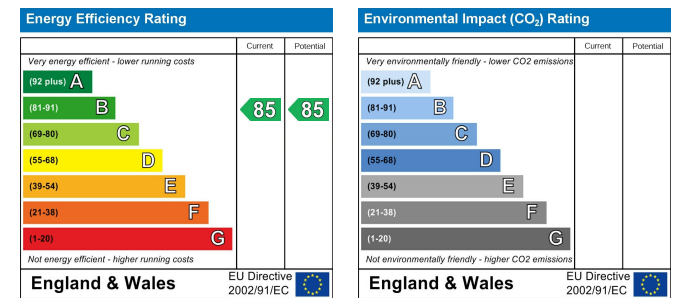


Floor plan produced in accordance with RICS Property Measurement Standards incorporating International Property Measurement Standards (IPMS2 Residential). © nichecom 2023. Produced for Lessel Ltd. REF: 1050990

Area Map



Energy Performance Graph



These particulars, whilst believed to be accurate are set out as a general outline only for guidance and do not constitute any part of an offer or contract. Intending purchasers should not rely on them as statements of representation of fact, but must satisfy themselves by inspection or otherwise as to their accuracy. No person in this firm's employment has the authority to make or give any representation or warranty in respect of the property.