

3 James Court, Richmond



3 James Court, Richmond

Offers in The Region of £400,000

A beautifully extended detached home in a sought after cul de sac, boasting panoramic countryside views and offered to the market chain free. Sitting in a quiet cul de sac within this highly regarded development, this impressive, detached property has been thoughtfully extended and remodeled to create a stunning, light filled home with far reaching views across open countryside towards the Cleveland Hills. The beautifully presented ground floor features a high quality kitchen, a cloakroom and a striking open plan living and dining area, perfect for modern family life and entertaining. Upstairs, there are two generous double bedrooms, including a luxurious master suite with its own dressing room and ensuite. The stylish bathroom completes the first floor. There is potential to create a third bedroom with minor alterations, offering added flexibility for growing families and those needing extra space. Externally the property benefits from driveway parking, a garage and a landscaped rear garden with seating areas designed to take full advantage of the breathtaking countryside views. This home is offered chain free, and early viewing is highly recommended to fully appreciate everything it has to offer.



Entrance Hallway:

Accessed through a part glazed timber door, the hallway has a radiator and stairs to the first floor.

Cloakroom:

Fitted with a WC, a wash hand basin and a radiator.

Kitchen:

A generously sized kitchen fitted with a range of high quality units, complimented by soft close fittings and luxurious granite countertops.

Integrated appliances include Neff double oven, electric hob with a contemporary extractor hood, under counter fridge, and dishwasher. The space also features a tall larder cupboard, a convenient breakfast bar for informal dining, a upvc double glazed window, and two light tunnels that flood the room with natural light.

Open Plan Living Area:

A fantastic open plan space with full width concertina doors that flood the room with natural light and offer stunning views over the garden and open countryside.

The room comfortably accommodates both a dining area and relaxed seating, and features two radiators, a TV point and an impressive stone fireplace with gas fire.

First Floor Landing:

With loft access and a upvc double glazed window to the side of the property.

Master Suite:

Comprising a double bedroom, dressing room and ensuite.

The **Double Bedroom** features fitted wardrobes, a radiator, a TV point and a upvc double glazed window to the front of the property.

The **Ensuite** includes a large shower enclosure, WC, wash hand basin, heated towel rail and a upvc double glazed window.

The **Dressing Room**, originally the third bedroom, could easily be converted back if desired. It includes built in wardrobes, a radiator and a upvc double glazed window.

Bedroom 2:

A double bedroom with a built-in wardrobe, a radiator and a upvc double glazed window, with an extensive view over the open countryside.



Bathroom:

The very well-appointed bathroom is fitted with a white suite that comprises a bath with a Grohe shower over, a WC and a wash hand basin. There is a heated towel rail and a upvc double glazed window.

External

The property is set back from the road, featuring a driveway that provides off street parking and a lawned garden with planted rose garden. A gated path to the side leads to the rear garden.

The **Garage** has an up and over door, a door to the side of the property and plumbing for a washing machine.

The beautifully landscaped rear garden offers a peaceful retreat, perfect for relaxing and taking in the open views.

A generous paved patio provides ample space for outdoor dining, while formal and well stocked borders surround a neatly maintained lawn. To the rear, a charming pergola and decked seating area create the ideal spot for unwinding with an evening drink, appreciating the stunning views.





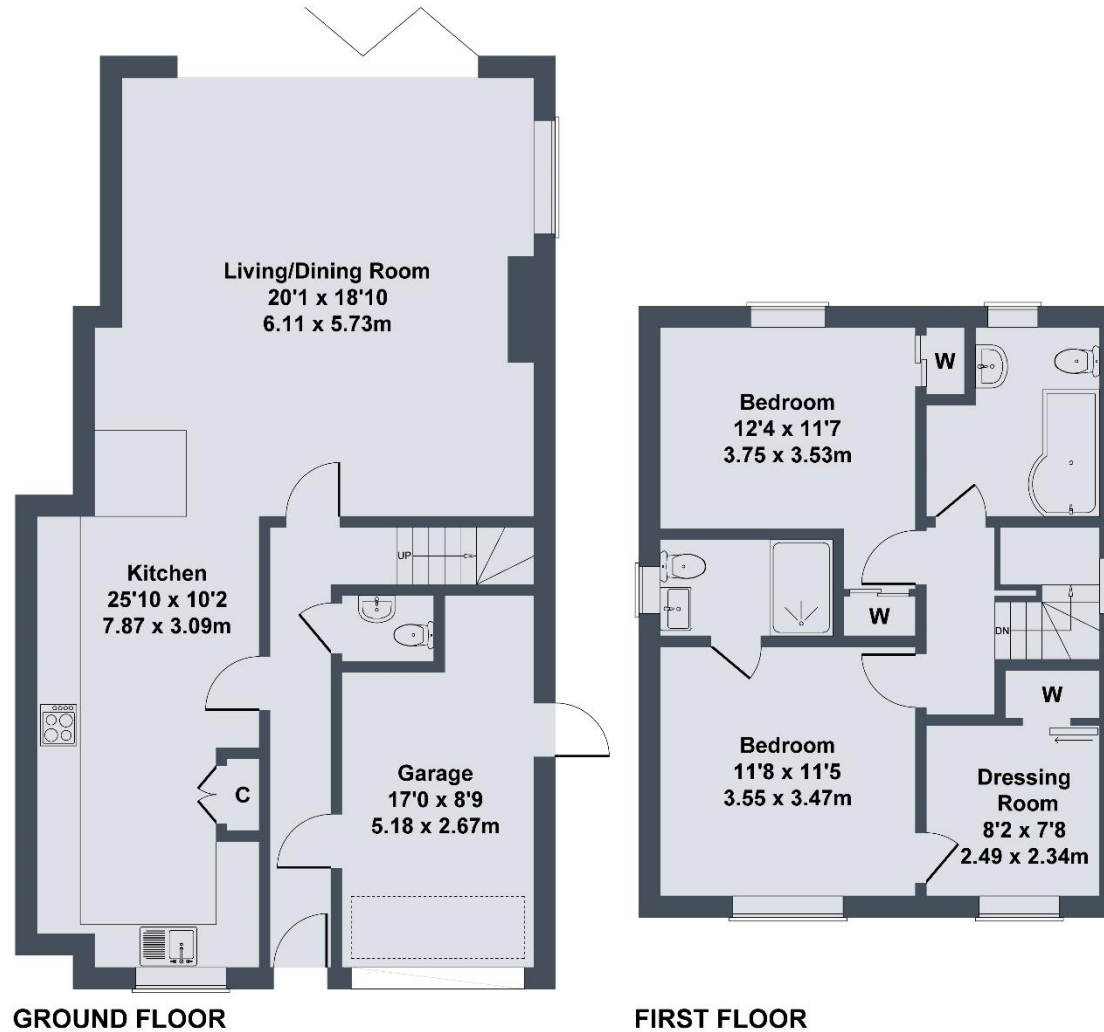
Additional Information

The postcode is DL10 7BN and the Council Tax Band is D.

The Viessman gas central heating boiler is located in the garage.



3 James Court, Richmond DL10 7BN



SKETCH PLAN FOR ILLUSTRATIVE PURPOSES ONLY

All measurements walls, doors, windows, fittings and appliances, their sizes and locations, are approximate only. They cannot be regarded as being a representation by the seller, nor their agent.

Produced by Potterplans Ltd. 2025

irvings
sales • lettings

irvings
sales • lettings

21 Market Place Richmond North Yorkshire DL10 4QG

T 01748 821700

E info@irvingsproperty.co.uk W www.irvingsproperty.co.uk