



Streatham High Road, SW16

£1,400 PCM

A one bedroom modern apartment located in one of the most sought after developments in Streatham Hill. Comprising reception room, double bedroom, fully integrated kitchen and bathroom this

- One Bedroom
- Great Condition
- Modern Apartment
- Shutter Blinds
- Desirable Location
- Close to Streatham Hill Station

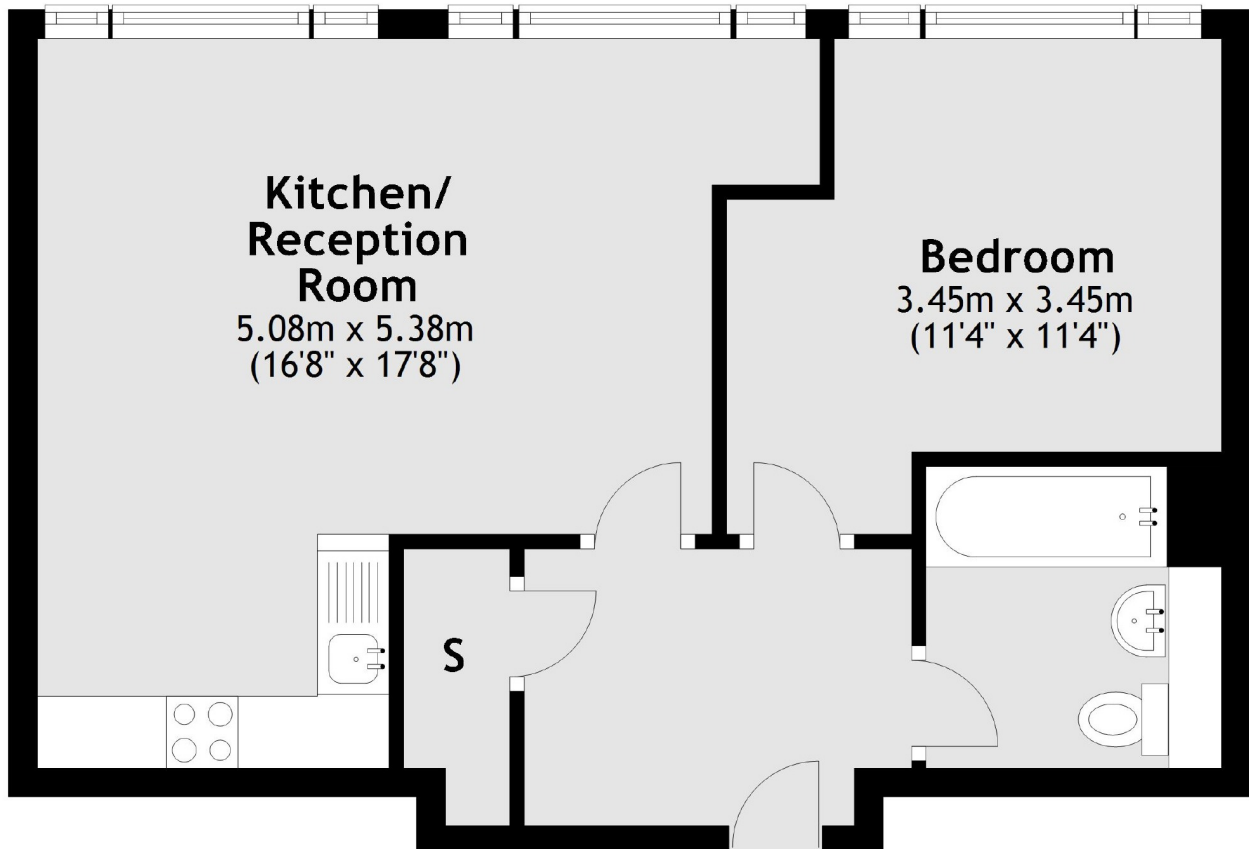
For further information on the costs associated with renting a property, please pop into our office or visit our website.



Norwich House offers easy access to a wide range of amenities that Streatham Hill has to offer. Commuters will benefit from one of the many buses down to Brixton and beyond. Streatham Hill station is close by which has very regular services to Clapham Junction, Victoria and London Bridge.



Ground Floor



Total area: approx. 45.9 sq. metres (493.8 sq. feet)

Jacksons Streatham
1-3 De Montfort Parade
Streatham High Road
Streatham
London
SW16 1BU

Energy Rating: We aim to make our particulars both accurate and reliable. However they are not guaranteed; nor do they form part of an offer or contract. If you require clarification on any points then please contact us, especially if you're traveling some distance to view. Please note that appliances and heating systems have not been tested and therefore no warranties can be given as to their good working order.