



Boss House

2 Boss Street, SE1

Asking Price £400,000

A large studio apartment situated in this popular warehouse conversion in the heart of Shad Thames. The property boasts exposed brickwork and solid wood floors and also benefits from built in storage, underground parking & 24 hour concierge.

CHESTERTONS



Boss House

2 Boss Street, SE1

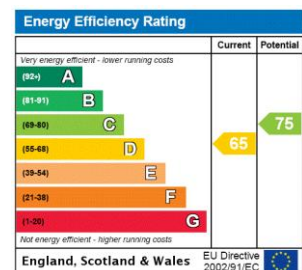
- Warehouse Conversion
- Studio apartment
- Excellent Shad Thames location
- Exposed brickwork
- Wooden flooring
- Allocated parking



A large studio apartment situated in this popular warehouse conversion in the heart of Shad Thames. The property boasts exposed brickwork and solid wood floors and also benefits from built in storage, parking and 24 hour concierge.

Shad Thames is a unique area steeped in history and character situated along the south side of the River Thames. The area is home to London's most iconic landmark, Tower Bridge and is within the vicinity of many attractions such as The Shard, Tate Modern and Tower of London. Shad Thames boasts a variety of bars and restaurants and is a short walk to the delights of Bermondsey Street, Maltby Street & Borough markets. Although The City is within walking distance the area is well connected with excellent transport links via London Bridge & Tower Hill stations as well as the river taxi.

Tenure: Leasehold 94 years 4 months
Service Charge: £3229 pa
Ground Rent: £200 tbc
Local Authority: London Borough of Southwark
Council Tax Band: C

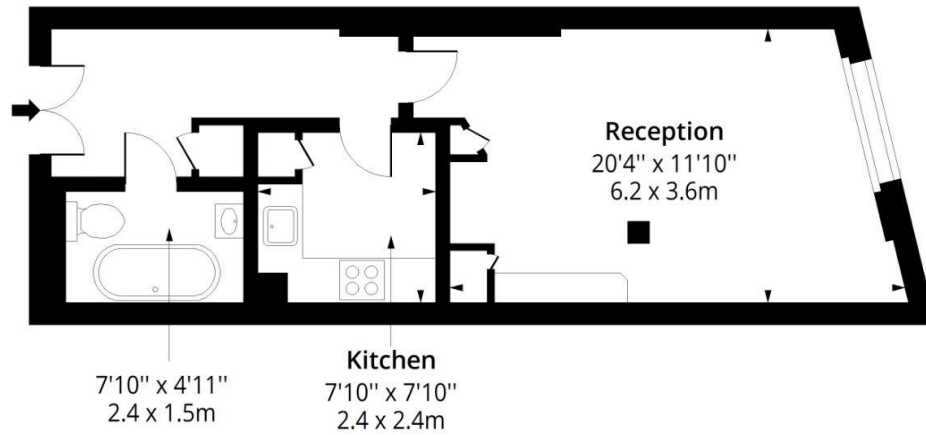


Chestertons Tower Bridge Sales

220 Tower Bridge Road
 Tower Bridge
 London
 SE1 2UP
 towerbridge@chestertons.co.uk
 020 7357 7999
 chestertons.co.uk

Boss House SE1

Approx. Gross Internal Area 440 Sq Ft - 40.88 Sq M



Ground Floor

Floor Area 440 Sq Ft - 40.88 Sq M



Measured according to RICS IPMS2. Floor plan is for illustrative purposes only and is not to scale. Every attempt has been made to ensure the accuracy of the floor plan shown, however all measurements, fixtures, fittings and data shown are an approximate interpretation for illustrative purposes only. 1 sq m = 10.76 sq feet.

lpaplus.com

Date: 25/3/2026

