



BEAUFORT GREEN



Broomhouse Lane, SW6

£2,500 Per month



SHORT LET. A beautifully kept one bedroom apartment in this popular development. The property offers a spacious and bright reception room leading out to the private balcony, separate kitchen, shower room and separate W/C.

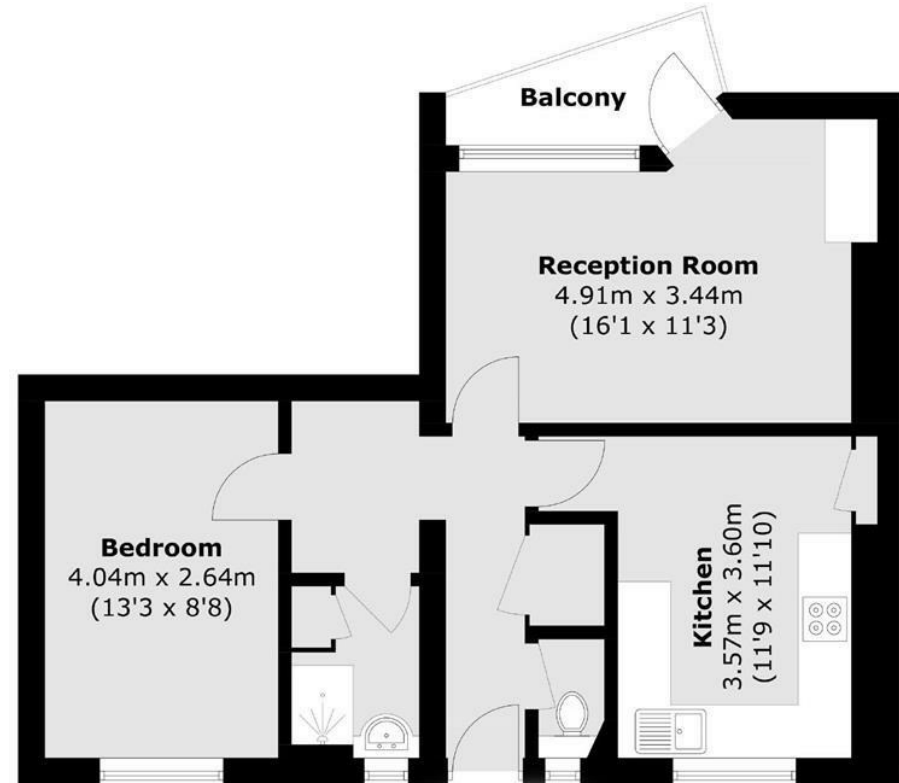
Located between South Park and Hurlingham Park, Sullivan Court is situated perfectly for the amenities on New Kings Road and transport links of Parsons Green.





BEAUFORT GREEN

BEAUFORT GREEN



At a Glance.

- Bright Reception Room
- Private Balcony
- Fitted Kitchen
- Spacious Bedroom
- Shower Room With Separate W/C
- Bills Included

Total area (approx.): 51.0 sq. m (549.0 sq. ft)
Balcony (approx.): 3.0 sq. m (32.3 sq. ft)

BEAUFORT GREEN

02074594100

charlie@beaufortgreen.co.uk

263 New Kings Road
London
SW16 1DB