



Symonds  
& Sampson



5 Combe Park  
Yeovil, Somerset

# 5 Combe Park

Yeovil  
Somerset  
BA21 3BD



- Stunning Semi Detached Home
  - Much Extended
  - Desirable Cul De Sac
  - Very Good Size Garden
  - Extensive Parking and Garage
- Superb Kitchen/Dining/Breakfast Room



Guide Price **£425,000**

Freehold

Yeovil Sales  
01935 423526  
[yeovil@symondsandsampson.co.uk](mailto:yeovil@symondsandsampson.co.uk)



## THE DWELLING

A fantastic and much extended semi-detached property benefitting from UPVC double glazing, gas central heating, large gardens and has had solar panels installed circa 3 years ago.

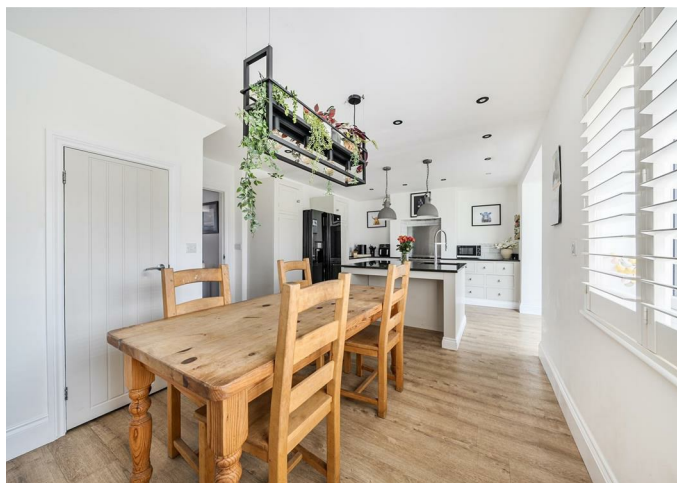
The property, which lies in a cul-de-sac, represents a very rare opportunity to acquire such a home; therefore, an early viewing is advised.

## SITUATION

Yeovil offers a wide range of excellent shopping, business and cultural facilities; there are many supermarkets, schools from primary through to secondary and Yeovil College within easy reach. Regular bus services run within the town, also serving nearby villages and neighbouring towns. A mainline railway station will be found at Yeovil Junction, and good road links to the A30, A303 and A37 are all close by. The M5 junction 25 is approximately 20 miles away, and the South Coast is approximately 25 miles.

## DIRECTIONS

What 3 words: [///employ.scars.moves](http://employ.scars.moves)





## ACCOMMODATION

A storm porch has a UPVC entrance door with a side screen leading to the reception hall, having a staircase rising to the first floor, attractive timber effect flooring and a storage cupboard.

The sitting room is a good size, having a bay window overlooking the front of the property, whilst also having a timber-effect floor, a wood burner with an attractive timber beam over.

The kitchen/dining/breakfast room is very much the "heart

of the home", and has a comprehensive range of units with marble effect worktops, cream door and stainless steel door furniture.

Fitted appliances include a five ring range with stainless steel splashback and hood, whilst there is a number of worktops with drawers and cupboards under, two larder cupboards and an island unit with stainless steel sink and mixer tap, plumbing for dishwasher and a breakfast bar.

The superb living room is of extensive UPVC double-glazed construction with recently fitted high-quality

window blinds, with a door to the rear.

Finally, on the ground floor is a utility room with a Belfast sink with mixer tap, a door to the rear and a cloakroom with a white suite.

On the first floor is a good-sized landing, a super master bedroom with two double wardrobes and benefits from an en suite fitted with a contemporary white suite with double shower cubicle, whilst there are two further double bedrooms, with the smallest being dual aspect, and having timber stairs to the roof space.



Finally, on the first floor is a luxury family bathroom fitted with a white suite, having an attractive oval free-standing bath, timber panel to dado height and being triple aspect.

Please note that the property was originally constructed as a four-bedroom property and, if required, could be converted back as such.

## OUTSIDE

At the front is a shared driveway with parking for 4/5 vehicles, which leads to the garage with an up and over door, personal door, light and power connected, whilst twin

doors lead to the garden.

The rear garden is a very good size with large lawns, a super pond with a water feature, a number of sheds, a patio, a tap, and is enclosed by lap panel fencing.

## SERVICES

Mains water, gas, electricity and drainage. Gas-fired central heating.

Broadband - Ultrafast broadband is available.  
Mobile signal/coverage - There is mobile coverage in the area. Please refer to Ofcom's website for more details.

## MATERIAL INFORMATION

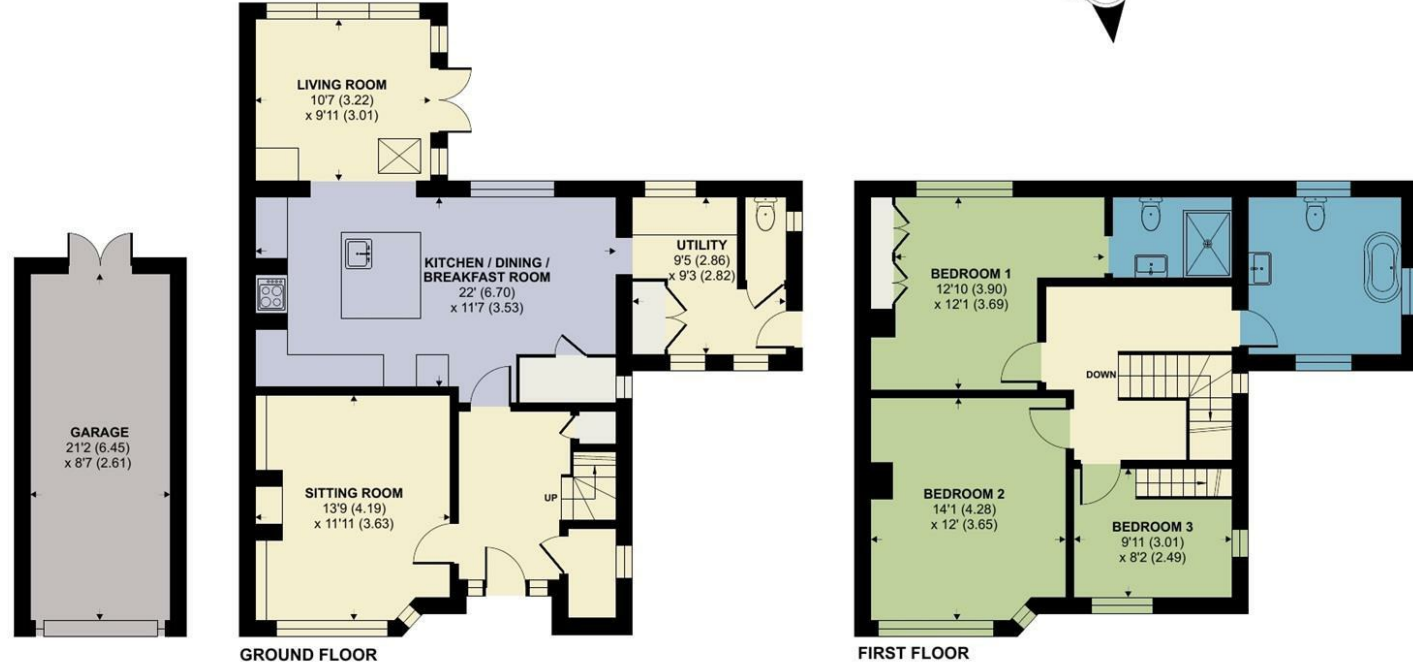
Council Tax Band: C

Flood Risk: Very Low

| Energy Efficiency Rating                                   |   | Current | Potential |
|--|---|---------|-----------|
| Minimum Energy Efficacy Class (MEES) - lower ratings only  |   |         |           |
| A  | B | 79      | 85        |
| C  | D |         |           |
| E  | F |         |           |
| G  |   |         |           |
| Minimum Energy Efficacy Class (MEES) - higher ratings only |   |         |           |
| England & Wales  |   |         |           |

# Combe Park, Yeovil

Approximate Area = 1414 sq ft / 131.3 sq m  
 Garage = 181 sq ft / 16.8 sq m  
 Total = 1595 sq ft / 148.1 sq m  
 For identification only - Not to scale



Floor plan produced in accordance with RICS Property Measurement 2nd Edition, incorporating International Property Measurement Standards (IPMS2 Residential). © ncthemcom 2026. Produced for Symonds & Sampson. REF: 1446508



YEO/JS/22.04.2026



01935 423526

yeovil@symondsandsampson.co.uk  
 Symonds & Sampson LLP  
 2, Court Ash,  
 Yeovil, Somerset BA20 1HG



Important Notice: Symonds & Sampson LLP and their Clients give notice that: 1. They have no authority to make or give any representations or warranties in relation to the property. These particulars do not form part of any offer or contract and must not be relied upon as statements or representations of fact. 2. Any areas, measurements or distances are approximate. The text, photographs and plans are for guidance only and are not necessarily comprehensive. It should not be assumed that the properties have all necessary planning, building regulation or other consents and Symonds and Sampson LLP have not tested any services, equipment of facilities. 3. We have not made any investigation into the existence or otherwise of any issues concerning pollution of the land, air or water contamination and the purchaser is responsible for making his/her own enquiries in this regard. 4. The property is sold subject to and with the benefit of all existing wayleaves, easements and rights of way whether public or private, specifically mentioned or not. The vendors shall not be required to define any such rights, privileges or advantages.

**SALES | LETTINGS | AUCTIONS | FARMS & LAND | COMMERCIAL | NEW HOMES | PLANNING & DEVELOPMENT**