

Causton Square, Dagenham

£1,550 pcm Leasehold

Available Now • Lounge/Diner • Separate Kitchen • Excellent Condition • Allocated Parking Space • Double Glazing • Walking Distance To Heathway Station & Shops



Stoneshaw

Spacious 2-bed flat in excellent condition with lounge/diner, fitted kitchen, modern bathroom, double glazing, parking, and close to Heathway Station and shops. Available now.

Council Tax band: C

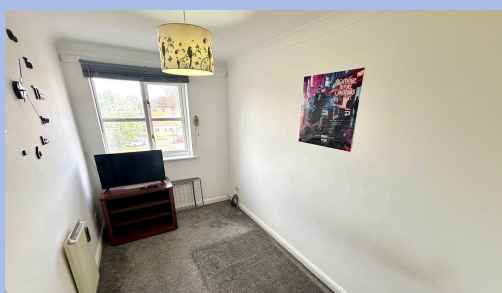
Tenure: Leasehold

EPC Energy Efficiency Rating: D

EPC Environmental Impact Rating: D



- Available Now
- Lounge/Diner
- Separate Kitchen
- Excellent Condition
- Allocated Parking Space
- Double Glazing
- Walking Distance To Heathway Station & Shops



You can include any text here. The text can be modified upon generating your brochure.