



# ROYAL COLLEGE STREET, NW1

£750,000

- Three double bedrooms
- Two shower rooms
- Private garden
- 985 Square Feet
- Share of freehold
- No onward chain

@marshandparsons  
marshandparsons.co.uk

MARSH &  
PARSONS



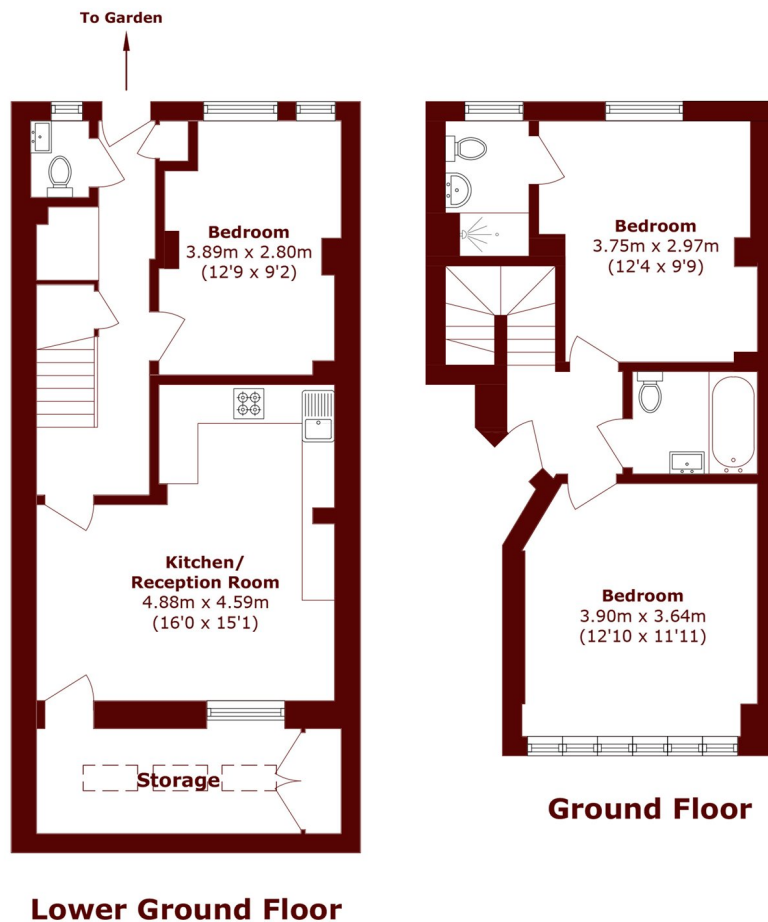
# ABOUT THE PROPERTY

A split-level apartment with a private garden, ideally located in the heart of Camden. The property features three double bedrooms, two shower rooms, a guest WC, and an open-plan kitchen and reception area. It also benefits from a share of the freehold and private garden.

Royal College Street is ideally located, just a short walk from Camden Road Overground, Camden Town (Northern Line), and King's Cross, offering access to multiple Underground lines, the Overground network, and Eurostar services.



# STEP INSIDE ROYAL COLLEGE STREET



Total Area (approx.): 91.6 sq. m (985.9 sq. ft)

Camden  
020 7244 2200

Energy Rating: D We aim to make our particulars both accurate and reliable. However, they are not guaranteed; nor do they form part of an offer or contract. If you require clarification on any points then please contact us, especially if you're traveling some distance to view. Please note that appliances and heating systems have not been tested and therefore no warranties can be given as to their good working order

MARSH &  
PARSONS