



**St. Edmunds Drive, Emneth, Wisbech, PE14 8AX**

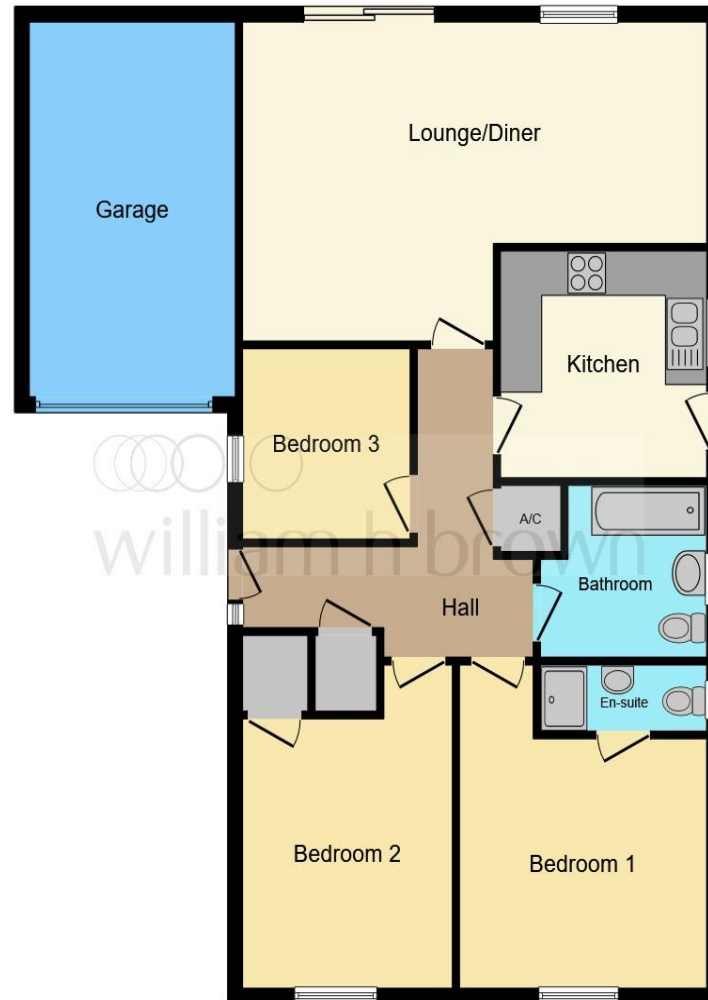


***Welcome to***

**St. Edmunds Drive, Emneth, Wisbech**

Tucked away in a peaceful cul-de-sac in the popular village of Emneth, this modern three-bedroom detached bungalow offers comfortable living, great space, and the added benefit of no upward chain. Step inside to a bright entrance hall leading through to a spacious L-shaped lounge and dining area, perfect for relaxing or entertaining. The kitchen provides ample workspace and storage, while the three bedrooms are all well-proportioned, including a master with en-suite shower room. A family bathroom completes the internal accommodation. Outside, the property enjoys a private enclosed rear garden, ideal for outdoor dining or simply unwinding. To the front, there's ample off-road parking and a garage, offering convenience and practicality in equal measure. Located just a short stroll from local amenities, the village school, and popular pubs, this well-kept bungalow combines quiet village living with everyday convenience - an excellent choice for families, couples, or downsizers alike.





**Lounge/Diner**  
14' 4" x 22' 1" ( 4.37m x 6.73m )

**Kitchen**  
9' 10" x 10' ( 3.00m x 3.05m )

**Bedroom 1**  
11' 8" x 14' 5" ( 3.56m x 4.39m )

**Ensuite**

**Bedroom 2**  
9' 10" x 14' 5" ( 3.00m x 4.39m )

**Bedroom 3**  
8' 8" x 8' ( 2.64m x 2.44m )

**Bathroom**

**Garage**

This floor plan is for illustrative purposes only. It is not drawn to scale. Any measurements, floor areas (including any total floor area), openings and orientation are approximate. No details are guaranteed, they cannot be relied upon for any purpose and they do not form part of any agreement. No liability is taken for any error, omission or misstatement. A party must rely upon its own inspection(s). Powered by [www.focalagent.com](http://www.focalagent.com)

**Welcome to**

## **St. Edmunds Drive, Emneth, Wisbech**

- No upward chain
- Detached three-bedroom bungalow
- Spacious lounge/diner
- Master bedroom with en-suite
- Quiet cul-de-sac location
- Garage and off-road parking
- Ideal for families or downsizers
- Popular village of Emneth close to amenities

Tenure: Freehold EPC Rating: D

Council Tax Band: C

**£265,000**



Please note the marker reflects the postcode not the actual property

**view this property online** [williamhbrown.co.uk/Property/WSB127957](http://williamhbrown.co.uk/Property/WSB127957)



Property Ref:  
WSB127957 - 0004

1. MONEY LAUNDERING REGULATIONS Intending purchasers will be asked to produce identification documentation at a later stage and we would ask for your co-operation in order that there is no delay in agreeing the sale. 2. These particulars do not constitute part or all of an offer or contract. 3. The measurements indicated are supplied for guidance only and as such must be considered incorrect. Potential buyers are advised to recheck measurements before committing to any expense. 4. We have not tested any apparatus, equipment, fixtures or services and it is in the buyers interest to check the working condition of any appliances. 5. Where an EPC, or a Home Report (Scotland only) is held for this property, it is available for inspection at the branch by appointment. If you require a printed version of a Home Report, you will need to pay a reasonable production charge reflecting printing and other costs. 6. We are not able to offer an opinion either written or verbal on the content of these reports and this must be obtained from your legal representative. 7. Whilst we take care in preparing these reports, a buyer should ensure that his/her legal representative confirms as soon as possible all matters relating to title including the extent and boundaries of the property and other important matters before exchange of contracts.

William H Brown is a trading name of Sequence (UK) Limited which is registered in England and Wales under company number 4268443, Registered Office is Cumbria House, 16-20 Hockliffe Street, Leighton Buzzard, Bedfordshire, LU7 1GN. VAT Registration Number is 500 2481 05.



**william h brown**



**01945 464451**



[Wisbech@williamhbrown.co.uk](mailto:Wisbech@williamhbrown.co.uk)



20 High Street, WISBECH, Cambridgeshire,  
PE13 1DE



**[williamhbrown.co.uk](http://williamhbrown.co.uk)**