



Walpole Place, TW11

£250,000

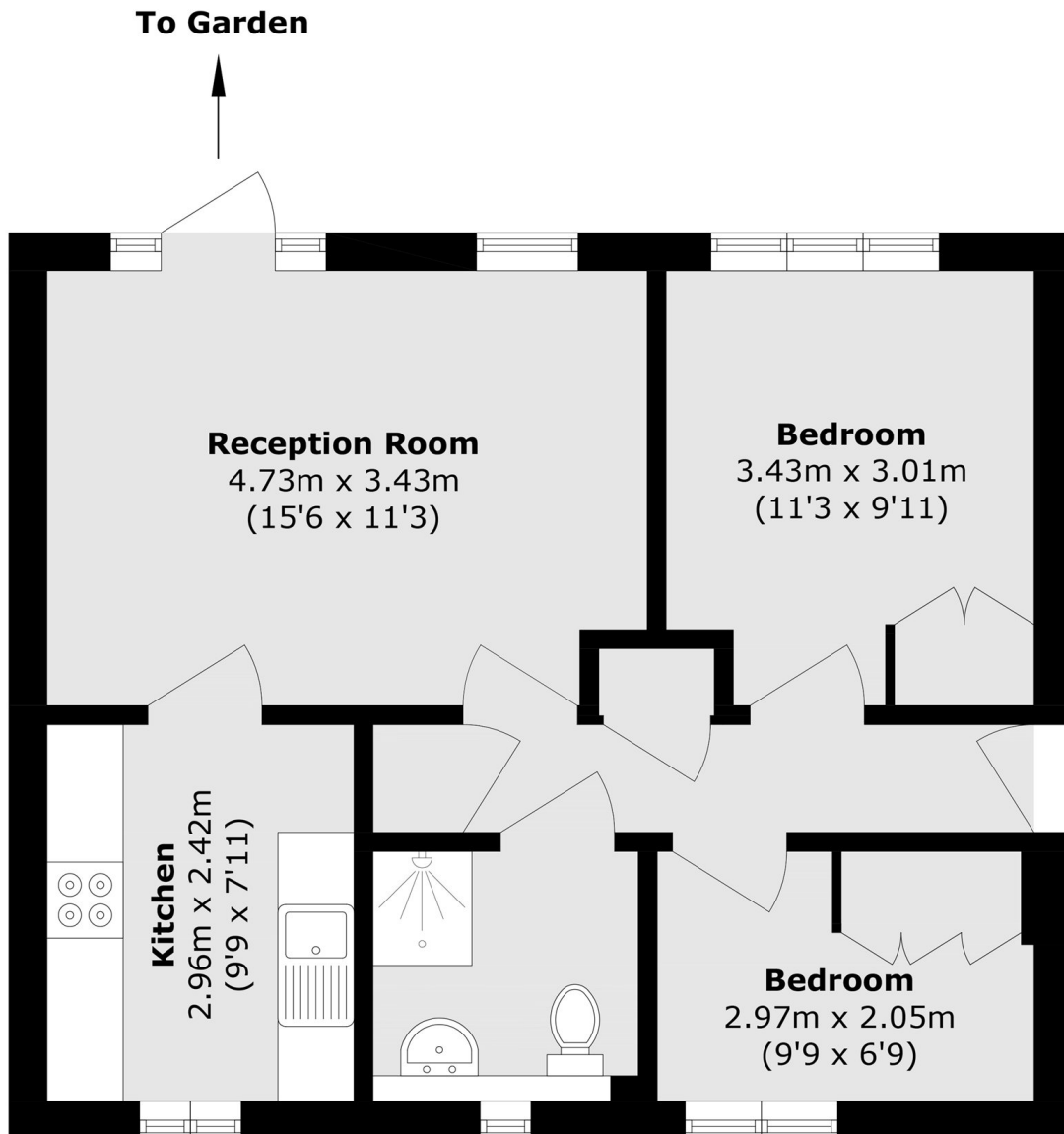
This spacious ground floor two bedroom retirement apartment offers independent living, combined with on-site facilities and a lovely communal garden. Positioned in the centre of Teddington, this well kept development is designed to help residents feel relaxed and secure.

Bartons Court is located at the end of Walpole Road which is situated in the centre of Teddington, close to Teddington station and Teddington's Broad Street with its array of shops and restaurants.

Features

- Two Bedrooms
- Central Location
- Retirement Development
- Communal Gardens
- No Onward Chain
- 70% Share

Walpole Place, Teddington, TW11



Total area (approx.): 50.9 sq. m (547.8 sq. ft)