



HILDEN
Management

The Paddocks, Buck Street, Challock, Ashford. Kent TN25 4AT

£815,000

🛏 4 🚗 3 🛋 3

- The show home is now available!
- Four double bedroom detached home
- Built By The Award Winning, Clarendon Homes
- Generous plot, with porcelain patio
- An Exclusive Collection of Three and Four Bedroom Homes
- garage and driveway for multiple cars
- High Specification Finishes As Standard
- Luxury flooring, appliances as standard



Plot 1, the Show home, is now available! Don't miss your chance to book a viewing – with only three plots remaining, opportunities at The Paddocks are limited.

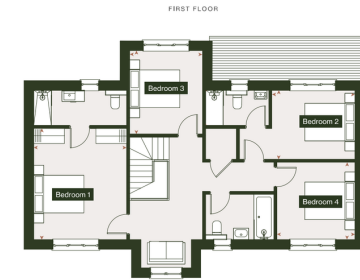
The Paddocks is a highly anticipated and exclusive collection of three- and four-bedroom homes, beautifully located in the picturesque village of Challock. Crafted by the award-winning Clarendon Homes, the development is nestled among mature trees and hedgerows, blending seamlessly with the area's architectural heritage. It offers the perfect balance of timeless village charm and modern living.

Each home has been thoughtfully designed with stylish, immaculate interiors and generous gardens. Residents will also enjoy shared access to three enchanting wildflower meadows, bringing natural beauty and a true sense of community to this exceptional development.





PLOT 1



Hilden Management Limited
Ground Floor, 2 Jubilee Way Faversham, Kent, ME13 2GD
01795 581005
info@hilden.management

hilden.management

Registered Office Address: Dry Close, Newbery Lane, Misterton, Somerset, TA18 8NE.
Company Number: 15048475

