



## St. Johns Wood Park, NW8

£3,500 Per calendar month

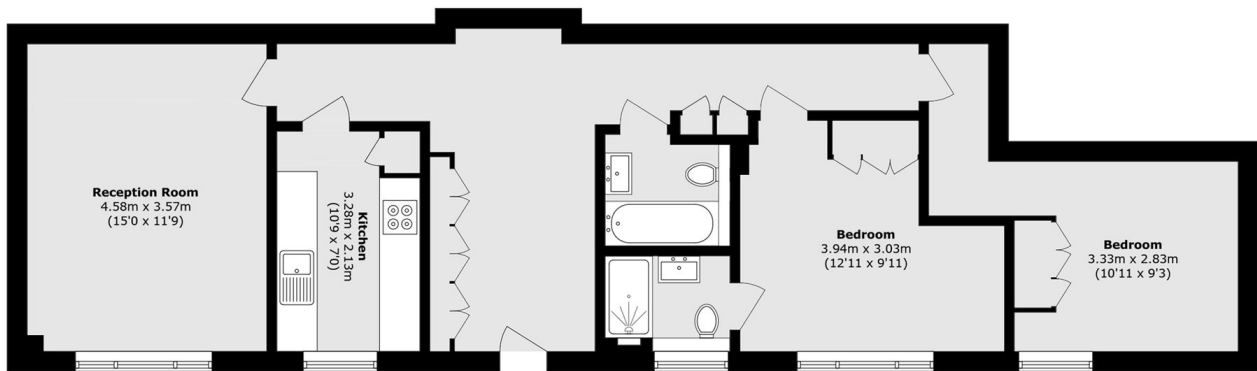
A modern two bedroom, two bathroom apartment in a portered block in St Johns Wood. Spacious reception room with wood floors, modern separate kitchen, master bedroom with built in storage, second double bedroom and family bathroom. Further benefits include a separate good sized storage unit, parking and a communal courtyard.

Park Lodge is located close to Swiss Cottage station and local shops, restaurants, cafés and supermarkets on Finchley Road.

### Features

- Two Double Bedrooms
- Two Bathrooms
- Ground Floor Apartment
- Communal Heating and Hot Water Included
- Porter
- Wood Floors In Reception

# St. Johns Wood Park, London, NW8



Total area (approx.): 76.4 sq. m (822.3 sq. ft)