

LEASEHOLD



Bungalow (EPC Rating:)

1C GLOUCESTER ROAD, SOUTHPORT, PR8 2AU

Price Guide

£400,000

FEATURES

- EPC: D
- Two reception rooms
- Courtyard garden with privacy
- Detached single garage
- Spacious 3-bedroom bungalow
- Kitchen with appliances
- Ample off-road parking
- Close to Birkdale Village



 **anthony james**
estate agents

3 Bedroom Bungalow located in Southport

Full Description

SALES | CHARLOTTE HOUSE, GROUND FLOOR, 35-37 HOGHTON STREET, SOUTHPORT, MERSEYSIDE, PR9 0NS



SALES | CHARLOTTE HOUSE, GROUND FLOOR, 35-37 HOGHTON STREET, SOUTHPORT, MERSEYSIDE, PR9 0NS

Call us on

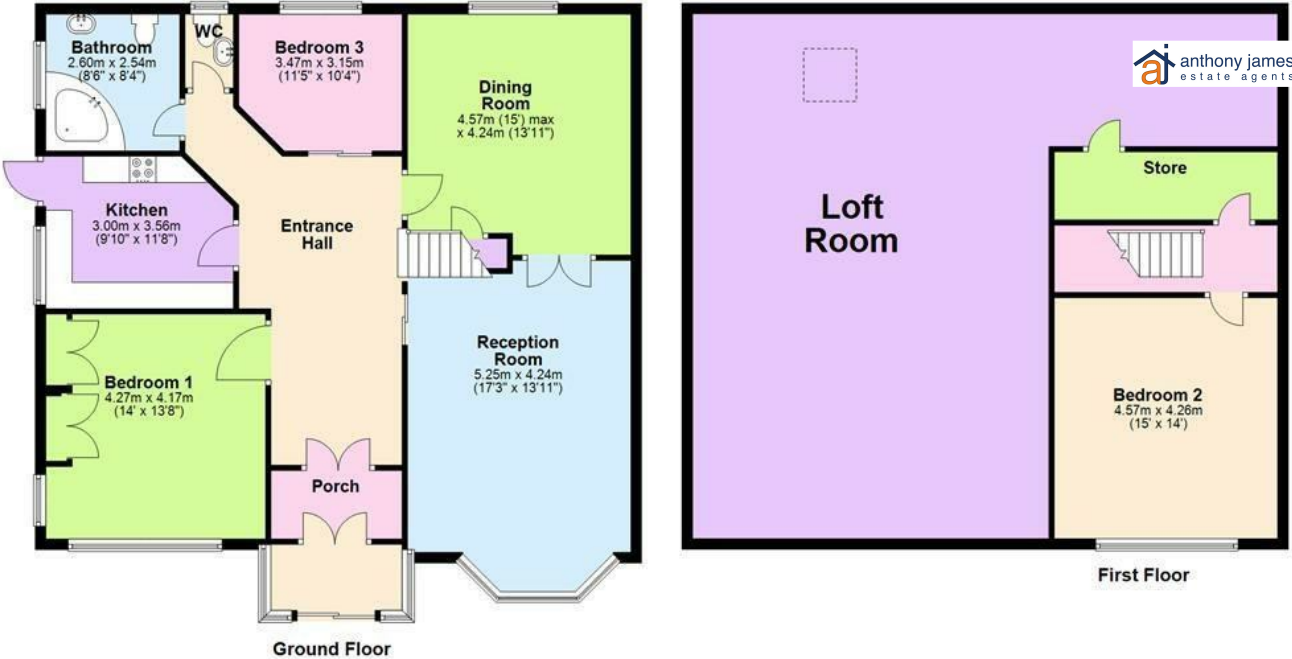
01704550048

sales@ajestateagents.co.uk

https://www.ajestateagents.co.uk/properties/sale

Council Tax Band

D



*Whilst every attempt has been made to ensure the accuracy of the floor plan contained here, measurements of doors, windows, rooms and any other item are approximate and no responsibility is taken for any error, omission, or misstatement. This plan is for illustrative purposes only and should only be used as such by any prospective purchaser.
Plan produced using PlanUp.

Energy Efficiency Rating		Current	Potential
Very energy efficient - lower running costs			
(92 plus) A			
(81-91) B			
(69-80) C			
(55-68) D			
(39-54) E			
(21-38) F			
(1-20) G			
Not energy efficient - higher running costs			
England & Wales		EU Directive 2002/91/EC	

Agents Note: Whilst every care has been taken to prepare these particulars, they are for guidance purposes only. All measurements are approximate and are for general guidance purposes only and whilst every care has been taken to ensure their accuracy, they should not be relied upon and potential buyers are advised to recheck the measurements.

