



10 Elgin Close, Hythe
£425,000



ANTHONY JAMES
PROPERTIES



10 Elgin Close

Hythe, Southampton

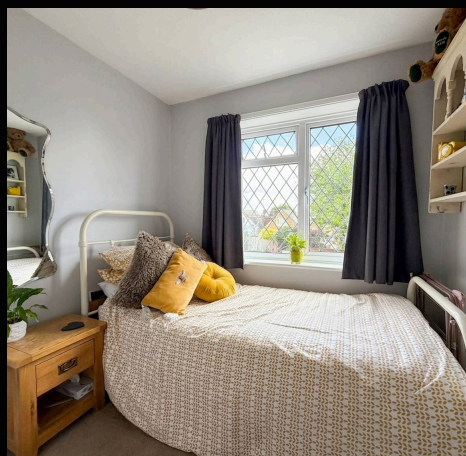
This well-presented three bedroom link-detached house is ideally situated in the popular Hythe location. The property features large windows throughout. The spacious lounge and dining area is open plan. Adjacent to the main living area is a sun room, which enjoys direct access to the garden. A dedicated home office and a practical downstairs W/C adds to the convenience of the ground floor layout.

Upstairs, the three generously sized bedrooms feature neutral décor. The property further benefits from gas fired central heating and double glazing throughout. Additional features include driveway parking and an integral garage, offering ample space for vehicles and storage.

The outside space is equally impressive, with a spacious and private rear garden. The garden is mainly laid to lawn, bordered by mature shrubs and fencing. A decked patio area adjacent to the house provides an ideal spot for outdoor dining or seating. The garden enjoys a sunny aspect for much of the day. The property also benefits from a well-maintained front garden.

Council Tax band: D

Tenure: Freehold



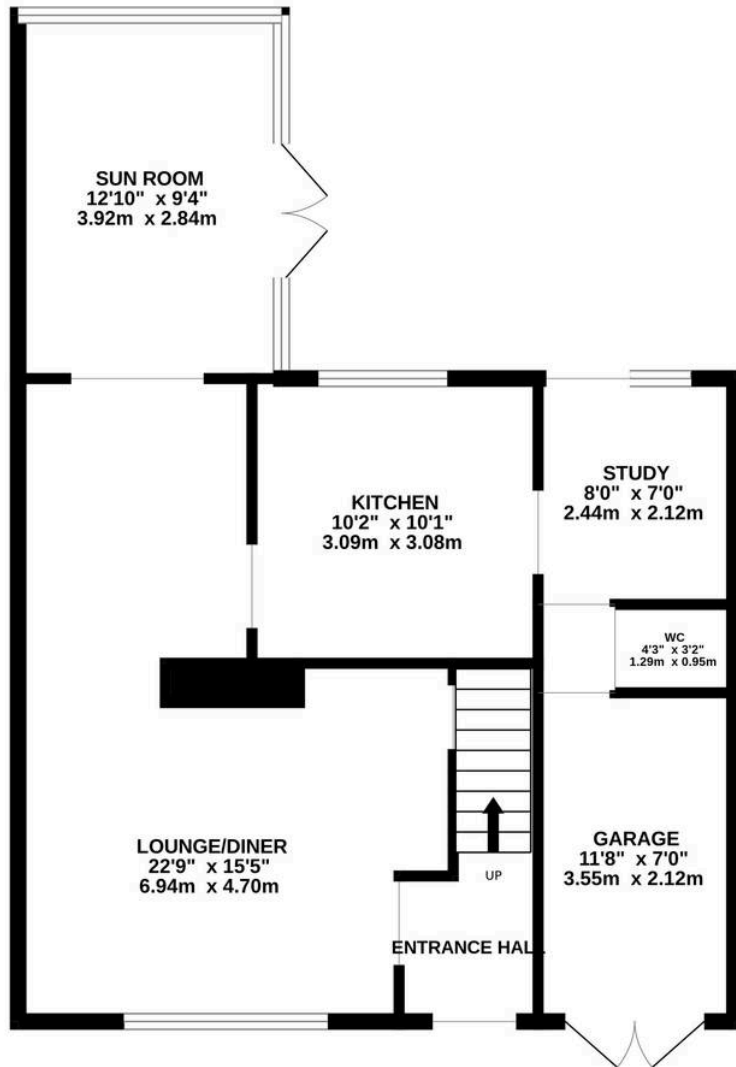
1 Southward House
Dibden Purlieu SO45 4PT



T: 02380 844405
info@anthonyjamesproperties.co.uk



GROUND FLOOR
692 sq.ft. (64.3 sq.m.) approx.



1ST FLOOR
430 sq.ft. (40.0 sq.m.) approx.



TOTAL FLOOR AREA : 1122 sq.ft. (104.3 sq.m.) approx.

Whilst every attempt has been made to ensure the accuracy of the floorplan contained here, measurements of doors, windows, rooms and any other items are approximate and no responsibility is taken for any error, omission or mis-statement. This plan is for illustrative purposes only and should be used as such by any prospective purchaser. The services, systems and appliances shown have not been tested and no guarantee as to their operability or efficiency can be given.

Made with Metropix ©2026