



7. Neuville Way
Kettering, NN14 2XT



This impressive extended three/four bedroom detached home is offered to the market with no onward chain, presenting an excellent opportunity for families seeking a spacious and highly versatile property.

The home has been significantly enhanced by a wraparound rear extension, creating a superb open-plan kitchen, dining and family space — the true heart of the home, ideal for both everyday living and entertaining. A separate lounge provides a more intimate reception area, while an additional ground floor room offers flexibility as a fourth bedroom, home office or study. A convenient downstairs W/C completes the ground floor.

To the first floor are three well-proportioned bedrooms, including a generous principal bedroom with en-suite, alongside a modern family bathroom.

Externally, the property benefits from off-road parking and a garage. In addition, a storage area has been added to the front of the garage, currently utilised as a home gym, offering further versatile space to suit a range of uses. To the rear, a private walled garden provides a low-maintenance outdoor setting, complemented by a summer house positioned behind the garage — ideal as a relaxation or entertaining space. This is a must-view property to fully appreciate the space, layout and lifestyle on offer.

£320,000



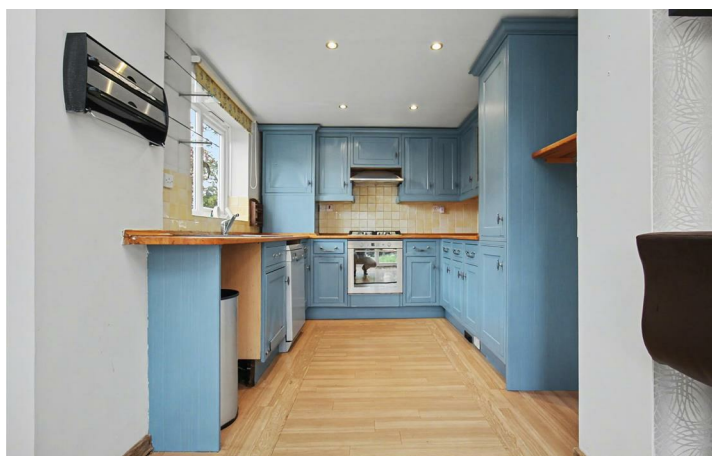
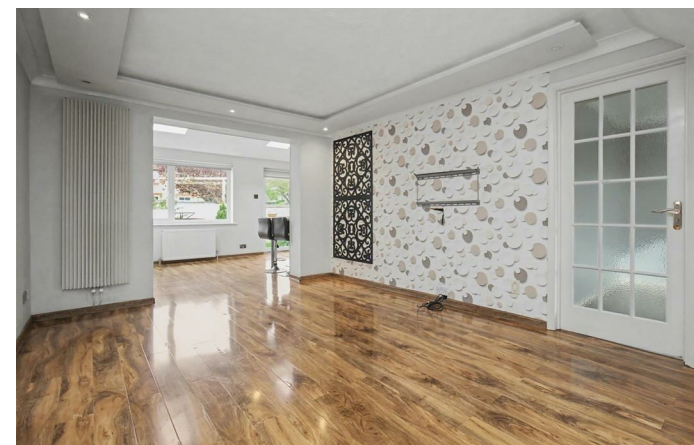
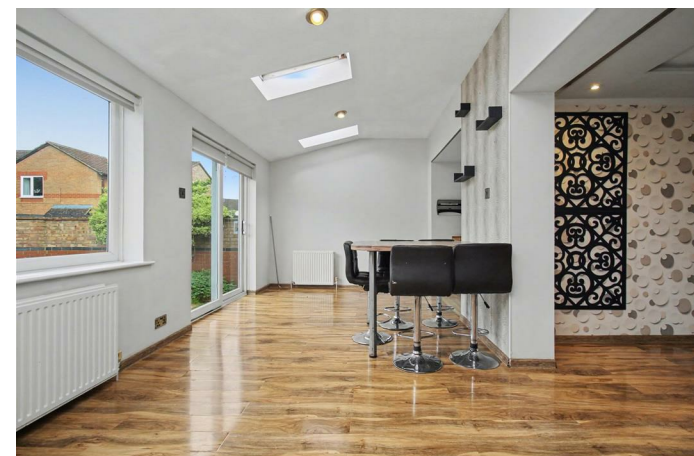
4

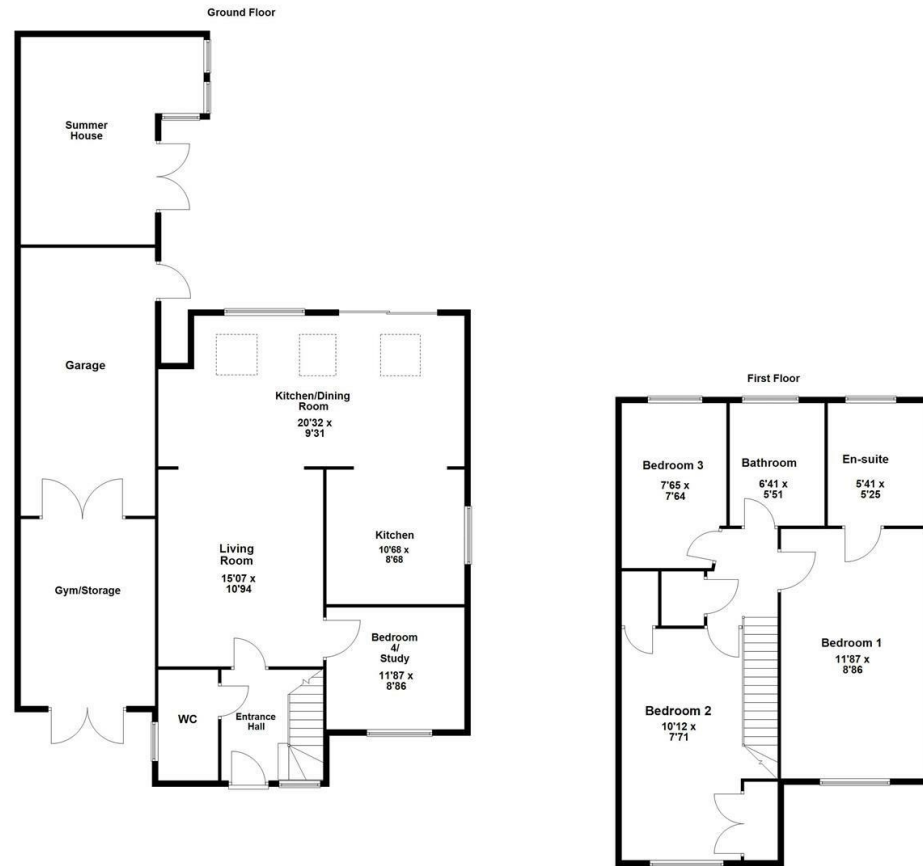



2



2





Energy Efficiency Rating		
	Current	Potential
<i>Very energy efficient - lower running costs</i>		
(92 plus) A		
(81-91) B		
(69-80) C		
(55-68) D		
(39-54) E		
(21-38) F		
(1-20) G		
<i>Not energy efficient - higher running costs</i>		
England & Wales	EU Directive 2002/91/EC 	





**Simpson
Ellson**

T: 01536 645960
E: rothwell@simpsonellson.co.uk



01536 645960
rothwell@simpsonellson.co.uk
<https://www.simpsonellson.co.uk>

32 High Street, Rothwell, Northants, NN14 6BQ