



[www.jeffreygross.co.uk](http://www.jeffreygross.co.uk)

CARDIFF

VALE

CAERPHILLY

BRISTOL



Jeffrey Ross

*Bute Terrace*

CITY CENTRE

# 63 Meridian Plaza, Bute Terrace, Cardiff, CF10

APPROX. GROSS INTERNAL FLOOR AREA 505 SQ FT 46.9 SQ METRES



Comments by Mr Rhys Carter

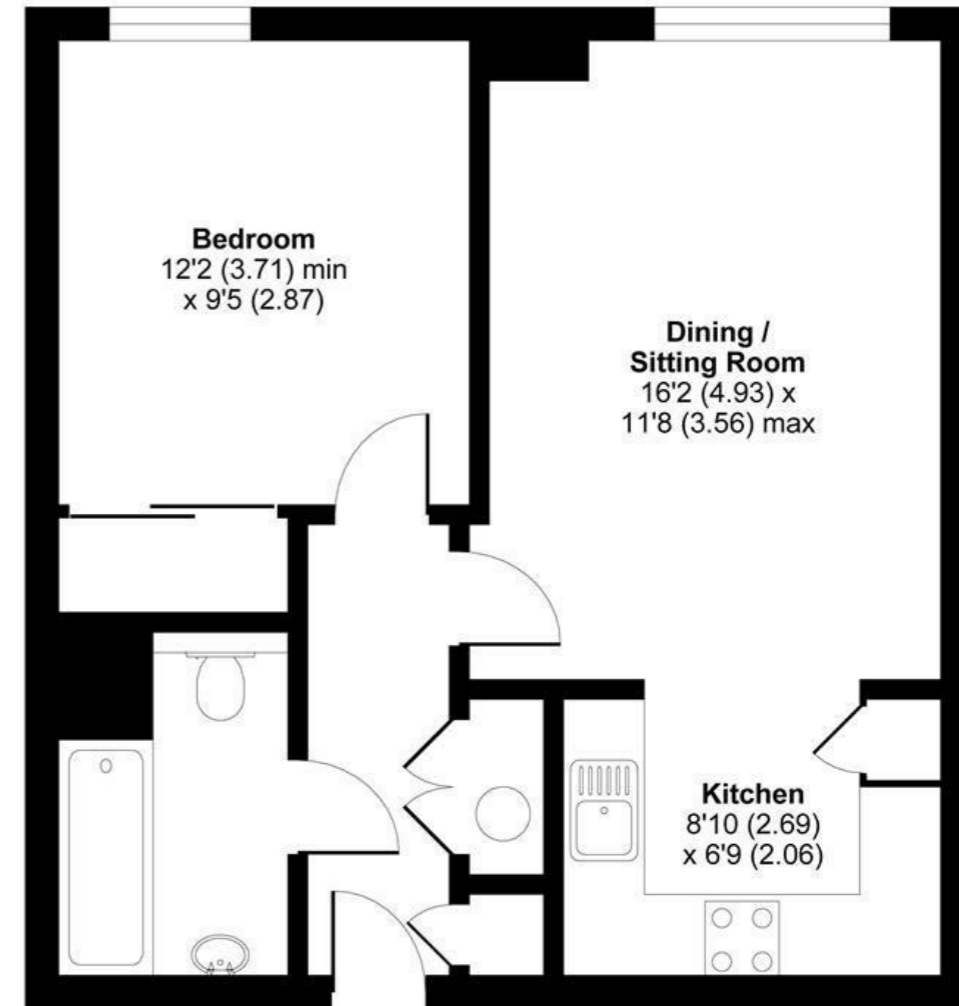


**Property Specialist**

**Mr Rhys Carter**

Senior valuer

rhys.carter@jeffreyross.co.uk



**SIXTH FLOOR**



Comments by the Homeowner

Whilst every attempt has been made to ensure the accuracy of the floor plan contained here, measurements of doors, windows and rooms are approximate and no responsibility is taken for any error, omission or misstatement. These plans are for representation purposes only as defined by RICS Code of Measuring Practice and should be used as such by any prospective purchaser. Specifically no guarantee is given on the total square footage of the property if quoted on this plan. Any figure given is for initial guidance only and should not be relied on as a basis of valuation.



# Bute Terrace

City Centre, CF10 2FP

PCM

£1,050 PCM



1 Bedroom(s)



1 Bathroom(s)



sq ft



Contact our  
**Penylan Branch**

02920 499680

A modern one bedroom recently refurbished apartment in a prime spot. The property is furnished and is situated in the heart of the City Centre in the popular Meridian Plaza development. The apartment briefly comprises of lounge, modern fully fitted kitchen including a dishwasher, one double bedroom with fitted wardrobes, bathroom with a shower and underfloor heating. The water rates are not included.

\*Please note pictures are of a very similar property in the same development. Actual pictures will be uploaded soon\*\*

EPC RATING of C  
COUNCIL TAX BAND of D.

A holding fee of one weeks' rent will be payable to secure the dwelling. This will be deducted from the final balance payable upon moving into the dwelling, subject to a successful application. Jeffrey Ross Limited reserves the right to retain this payment should the applicant have provided false or misleading information at the time of applying for the dwelling or failed to take reasonable steps to enter into the Standard Occupation Contract.





CARDIFF

VALE

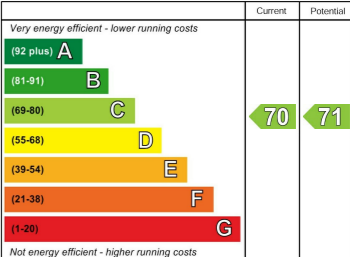
CAERPHILLY

BRISTOL

[www.jeffreyross.co.uk](http://www.jeffreyross.co.uk)



Energy Efficiency Rating



England & Wales

EU Directive 2002/91/EC

