



**£260,000** Leasehold

Within Wykeham Place, a sought-after development in Fareham, this spacious ground floor apartment comprises an open plan lounge/diner with a fitted kitchen, two generous sized double bedrooms, including an en-suite shower room, and a family bathroom. Further benefits include easy access to local amenities, and transport links, gated allocated parking, electric heating, double glazing and also a resident's bicycle/bin store on the ground floor. An internal viewing is highly recommended to appreciate the accommodation on offer!



## ENTRANCE HALL

## KITCHEN

9' 10" x 10' 6" (3m x 3.2m)



## LOUNGE/DINER

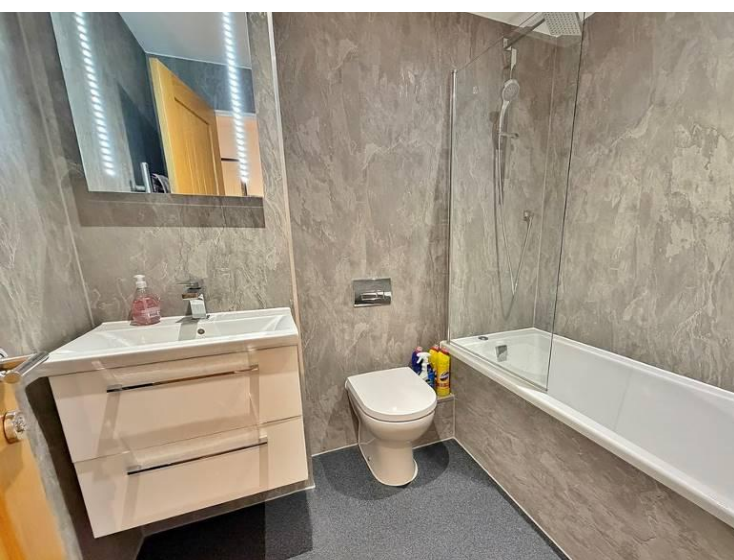
15' 7" x 12' 8" (4.75m x 3.86m)

## BEDROOM ONE

10' 5" x 12' 8" (3.18m x 3.86m)

## ENSUITE

5' 4" x 7' 6" (1.63m x 2.29m)



## BEDROOM TWO

13' 7" x 9' 10" (4.14m x 3m)

## BATHROOM

5' 6" x 7' 6" (1.68m x 2.29m)

## BIN STORE

## BIKE STORE

## SECURE GATED PARKING

Energy Efficiency Rating		Current	Potential
<i>Very energy efficient - lower running costs</i>			
(92+)	<b>A</b>		
(81-91)	<b>B</b>		
(69-80)	<b>C</b>		
(55-68)	<b>D</b>	59	59
(39-54)	<b>E</b>		
(21-38)	<b>F</b>		
(1-20)	<b>G</b>		
<i>Not energy efficient - higher running costs</i>			
<b>England &amp; Wales</b>		EU Directive 2002/91/EC	
WWW.EPC4U.COM			



# LEASE INFORMATION:



As of 06/05/2026, the vendor has informed us that the lease details are as follows:-

**Tenure:** Leasehold

**Landlord/Managing Agent:** Dack Property Management.

**Balance of Lease:** 245 as of 01/2019.

**Ground Rent Charges:** £250 per annum.

**Ground Rent Review Period:** Annually.

**Maintenance/Service Charges:** £709.86.

Wykeham Place Sports Hall - 6 apartments - Service charge total £2261 per annum for 2026.

**Maintenance /Service Charges Review Period:** Annually.

**Building Insurance:** TBC

Confirmation of all charges relating to this property should be confirmed by your solicitor prior to any exchanging of contracts.

GROUND FLOOR



Whilst every attempt has been made to ensure the accuracy of the floorplan contained herein, measurements of doors, windows, rooms and any other items are approximate and no responsibility is taken for any error, omission or mis-statement. This plan is for illustrative purposes only and should be used as such by any prospective purchaser. The services, systems and appliances shown have not been tested and no guarantee as to their operability or efficiency can be given.  
Made with Metrage 02025

## OFFICE ADDRESS

6 West Quay House, 20 West Street,  
Fareham, Hampshire, PO16 0LG

## OFFICE DETAILS

01329 888 328  
fareham@dibbensproperty.co.uk  
www.jdea.co.uk

**AGENTS' NOTE:** All measurements shown are approximate and may have been taken with a sonic measure and therefore should be verified. No electrical, mechanical or gas appliances have been tested by a representative of this company. These particulars do not constitute any part of an offer or contract. None of the statements contained in these particulars are to be relied on as statements or representations of fact and any intending purchaser must satisfy himself by inspection or otherwise to the correctness of each of the statements contained in these particulars. The Vendor does not make or give, and neither Jeffries & Dibbens nor any person in their employment has any authority to make or give, any representation or warranty whatever in relation to this property. Jeffries & Dibbens Ltd. Registered in England No. 3185348 registered office: 196 Havant Road, Drayton, Portsmouth, PO6 2EH