



Connells

Gable Close  
Daventry



## Property Description

Upon entering, a welcoming hallway leads to a convenient ground floor WC. The heart of the home features a spacious lounge, providing an ideal setting for relaxation, which seamlessly flows into a separate dining room, perfect for family meals or entertaining guests. To the rear, the well-appointed kitchen offers direct access to the private rear garden, complemented by a bright and airy conservatory, providing additional flexible living space for all seasons. Upstairs, the property doesn't disappoint, boasting four well-proportioned bedrooms, offering ample space for a growing family, guests, or dedicated home office areas. A contemporary family bathroom serves the upstairs accommodation. Externally, the property benefits from a private rear garden, providing a serene outdoor retreat for relaxation and recreation. To the front, a generous driveway offers off-road parking for up to three vehicles, alongside a substantial double garage, providing excellent storage, workshop potential, or secure parking.

Gable Close is ideally situated in a quiet residential area, yet within easy reach of Daventry town centre, offering a wide array of local shops, amenities, and excellent schooling options. Green spaces such as the popular Daventry Country Park are just a stone's throw away, perfect for leisurely walks, cycling, and outdoor activities. Commuters will appreciate the excellent road links, including the A45 and M1, ensuring easy access to surrounding areas and beyond.

## Entrance Porch

Double glazed door to the front aspect. Double glazed window to the side aspect.

## Entrance Hall

Wall mounted radiator.

## Cloakroom

Wash hand basin and low level WC. Double glazed window to the front aspect.

## Lounge

17' 5" x 11' 8" ( 5.31m x 3.56m )

Double glazed window to the front aspect. Electric fireplace. Wall mounted radiator.

## Dining Room

11' 8" x 8' 9" ( 3.56m x 2.67m )

Double glazed sliding doors to the rear aspect.

## Kitchen

13' x 8' 9" ( 3.96m x 2.67m )

Wall and base units. Work surfaces. Sink and drainer unit. Space for white goods.

## Conservatory

8' 8" x 6' 7" ( 2.64m x 2.01m )

## Bedroom One

14' 7" x 8' 9" ( 4.45m x 2.67m )

Double glazed window to the rear aspect. Wall mounted radiator. Built in wardrobes.

## Bedroom Two

11' 8" x 8' 5" ( 3.56m x 2.57m )

Double glazed window to the front aspect. Wall mounted radiator.

## Bedroom Three

8' 10" x 6' 7" ( 2.69m x 2.01m )

Double glazed window to the front aspect. Wall mounted radiator.

## Bedroom Four

7' 3" x 6' 8" ( 2.21m x 2.03m )

Double glazed window to the front aspect. Wall mounted radiator.

## Bathroom

Bath, wash hand basin and low level WC. Wall mounted radiator. Double glazed window to the rear aspect.

## Outside

## Front Garden

Laid to lawn. Driveway for three vehicles.

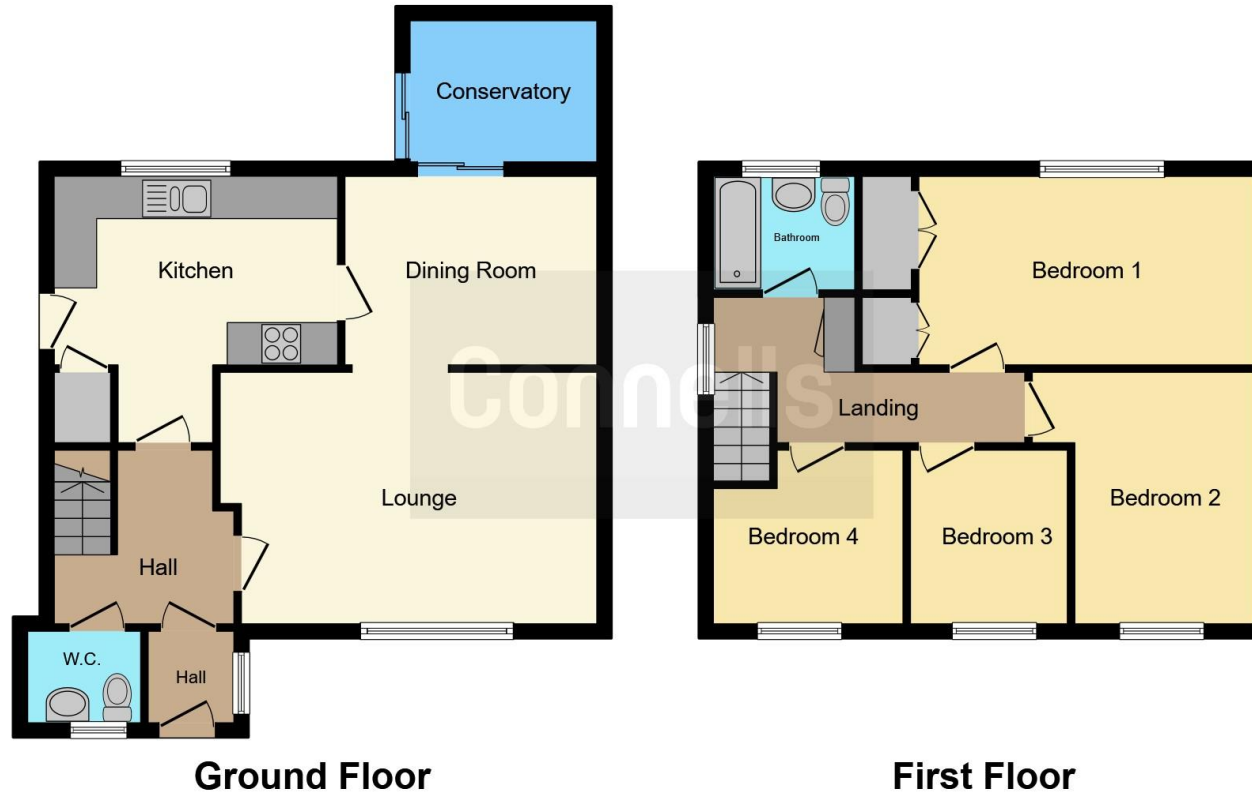
## Rear Garden

Block paved. Shed. Gated side access.









This floor plan is for illustrative purposes only. It is not drawn to scale. Any measurements, floor areas (including any total floor area), openings and orientation are approximate. No details are guaranteed, they cannot be relied upon for any purpose and they do not form part of any agreement. No liability is taken for any error, omission or misstatement. A party must rely upon its own inspection(s). Powered by [www.focalagent.com](http://www.focalagent.com)

To view this property please contact Connells on

**T 01604 638 281**  
**E [northampton@connells.co.uk](mailto:northampton@connells.co.uk)**

6 Wood Hill  
 NORTHAMPTON NN1 2DA

EPC Rating: B Council Tax  
 Band: D

Tenure: Freehold

**view this property online [connells.co.uk/Property/NHT414597](http://connells.co.uk/Property/NHT414597)**



1. MONEY LAUNDERING REGULATIONS Intending purchasers will be asked to produce identification documentation at a later stage and we would ask for your co-operation in order that there will be no delay in agreeing the sale. 2. These particulars do not constitute part or all of an offer or contract. 3. The measurements indicated are supplied for guidance only and as such must be considered incorrect. Potential buyers are advised to recheck measurements before committing to any expense. 4. We have not tested any apparatus, equipment, fixtures, fittings or services and it is in the buyers interest to check the working condition of any appliances.

Connells Residential is registered in England and Wales under company number 1489613, Registered Office is Cumbria House, 16-20 Hockliffe Street, Leighton Buzzard, Bedfordshire, LU7 1GN. VAT Registration Number is 500 2481 05.

**See all our properties at [www.connells.co.uk](http://www.connells.co.uk) | [www.rightmove.co.uk](http://www.rightmove.co.uk) | [www.zoopla.co.uk](http://www.zoopla.co.uk)**

Property Ref: NHT414597 - 0005