



## Queens Road, SW19

£525,000

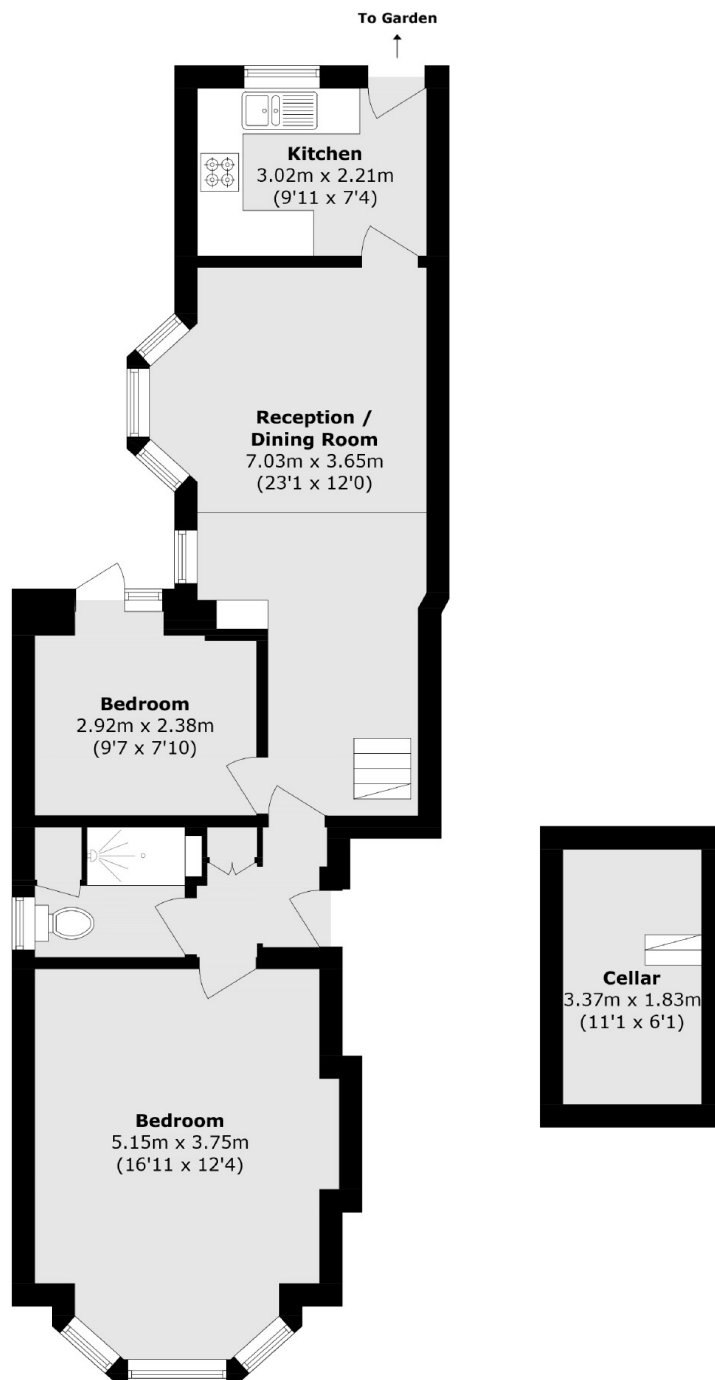
This semi-detached, two double bedroom Victorian conversion flat features a modern bathroom and kitchen, a large landscaped south facing private garden, a share of freehold and no onward chain

Ideally located with excellent transport connections to central London and beyond, with Wimbledon Town (District Line & Southern Railway) and Colliers Wood (Northern Line) around 15 minutes' walk and Haydons Road Thameslink line just a few minutes away. All major supermarkets are close by, with the Wandle River less than 5 minutes' walk and South Park Gardens around fifteen.

### Features

- Two Double Bedrooms
- Ground Floor Conversion
- Share of Freehold
- Off Street Parking
- South Facing Private Garden
- No Onward Chain

# Queens Road, London, SW19



Total area (approx.): 67.4 sq. m (725.9 sq. ft)

## Dexters

Wimbledon  
12 The Broadway  
London  
SW19 1RF  
Sales  
020 8545 8580

Energy Rating: C. We aim to make our particulars both accurate and reliable. However they are not guaranteed; nor do they form part of an offer or contract. If you require clarification on any points then please contact us, especially if you're traveling some distance to view. Please note that appliances and heating systems have not been tested and therefore no warranties can be given as to their good working order.

 **RICS** | Regulated  
Estate Agent  
and Letting Agent

[dexters.co.uk](https://www.dexters.co.uk)