



Handley Drive, SE3

£475,000

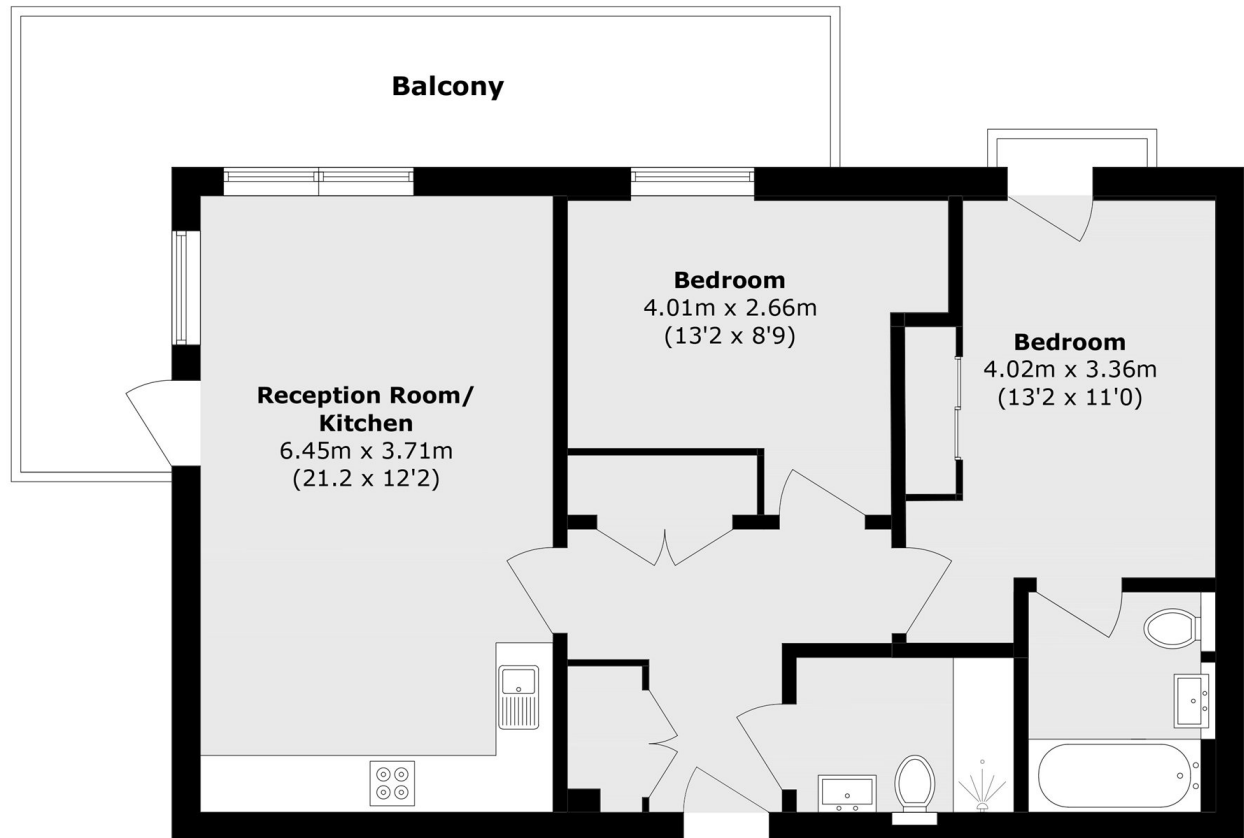
An amazing opportunity to acquire this two-bedroom, two-bathroom modern apartment, situated on the fourth floor. Further features include a large private balcony/terrace, wonderful communal gardens, and a private parking space.

Merlin Court is a two-minute walk from Kidbrooke train station, offering direct services to London Bridge (15 minutes), Waterloo East (20 minutes), Charing Cross (25 minutes), and London Victoria (28 minutes). The development benefits from a vast amount of parkland and is situated in the immediate vicinity of some of London's most vibrant areas, including Blackheath Village and Greenwich, both of which feature an array of boutiques, restaurants, and bars.

Features

- 24 Hours Concierge
- Resident Gym
- Private Parking
- Wrap Around Balcony Terrace
- Open- Plan Living
- Offered Chain Free

Handley Drive,
London, SE3



Total area (approx.): 69.3 sq. m (745.9 sq. ft)
Balcony area (approx.): 18.6 sq. m (200.2 sq. ft)