

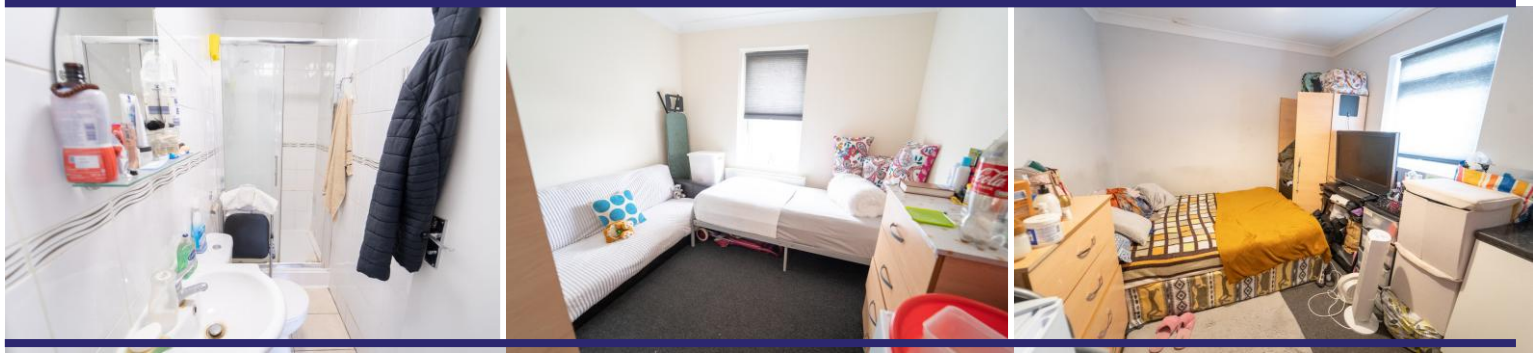


## Central Avenue | Hayes | UB3 2BY

Hiltons Estates introduces an exceptional investment opportunity! This 6-bedroom House in Multiple Occupation (HMO) is a lucrative venture with the potential to generate an impressive potential monthly income of £6000. Located in a prime area, this property is strategically designed to maximize rental returns. With six bedrooms, this HMO caters to a broad tenant base, ensuring consistent occupancy and income. Investors can capitalize on the rising demand for shared housing and secure a steady monthly return on their investment. Don't miss out on this chance to enhance your portfolio and enjoy a hassle-free income stream. Highly Recommended! Call NOW!

## Offers Over £700,000

- 6 Bed HMO
- Earning potential of £6000 pm
- Strategic location for maximum rental returns
- Consistent occupancy and income
- Investment Opportunity



GROUND FLOOR

1ST FLOOR



Whilst every attempt has been made to ensure the accuracy of the floorplan contained here, measurements of doors, windows, rooms and any other items are approximate and no responsibility is taken for any error, omission or mis-statement. This plan is for illustrative purposes only and should be used as such by any prospective purchaser. The services, systems and appliances shown have not been tested and no guarantee as to their operability or efficiency can be given.  
Made with Metroplex 12/2014

## Contact Details

137 Western Road

Southall

Middlesex

UB2 5HN

[www.hiltons-estates.com](http://www.hiltons-estates.com)

[Harvin@hiltons-estates.com](mailto:Harvin@hiltons-estates.com)

02088679555

Score	Energy rating	Current	Potential
92+	A		
81-91	B		
69-80	C		80 C
55-68	D	67 D	
39-54	E		
21-38	F		
1-20	G		

Agents Note: Whilst every care has been taken to prepare these sales particulars, they are for guidance purposes only. All measurements are approximate are for general guidance purposes only and whilst every care has been taken to ensure their accuracy, they should not be relied upon and potential buyers are advised to recheck the measurements