



STEPHENSON BROWNE

Wordsworth Way, Alsager, Stoke-On-Trent

ST7 2NU

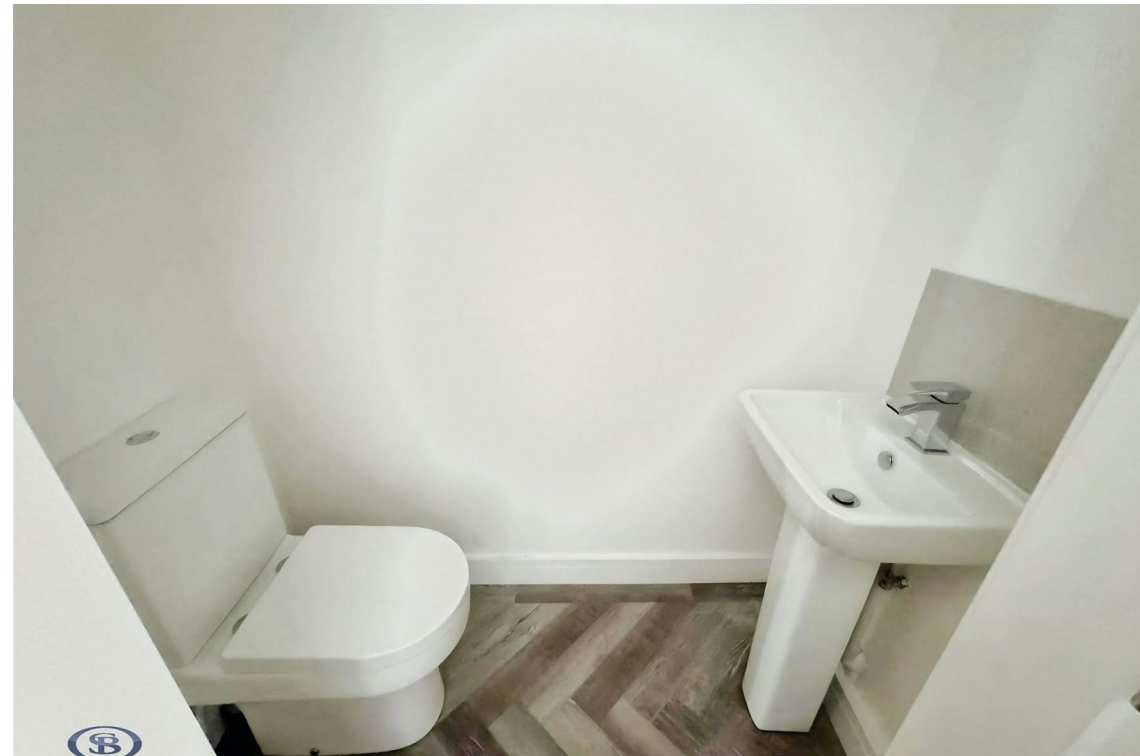


£1,295

Description

NOT TO BE MISSED! This beautifully finished new-build three-bed semi-detached home boasts standout features, including a contemporary glass-panelled staircase, quality LVT flooring with underfloor heating, and an electric car charging port. The entrance hallway leads to a ground floor WC, storage cupboard, and a stylish modern kitchen with integrated appliances and space for a washing machine. A generous rear lounge opens onto the enclosed lawned garden with patio.

Upstairs offers one spacious bedroom and two smaller rooms, along with a modern family bathroom. Ideally located close to Alsager's village amenities, with great commuter links and walking distance to the train station. Council Tax band C, EPC rating B, Long-term let. Available NOW.

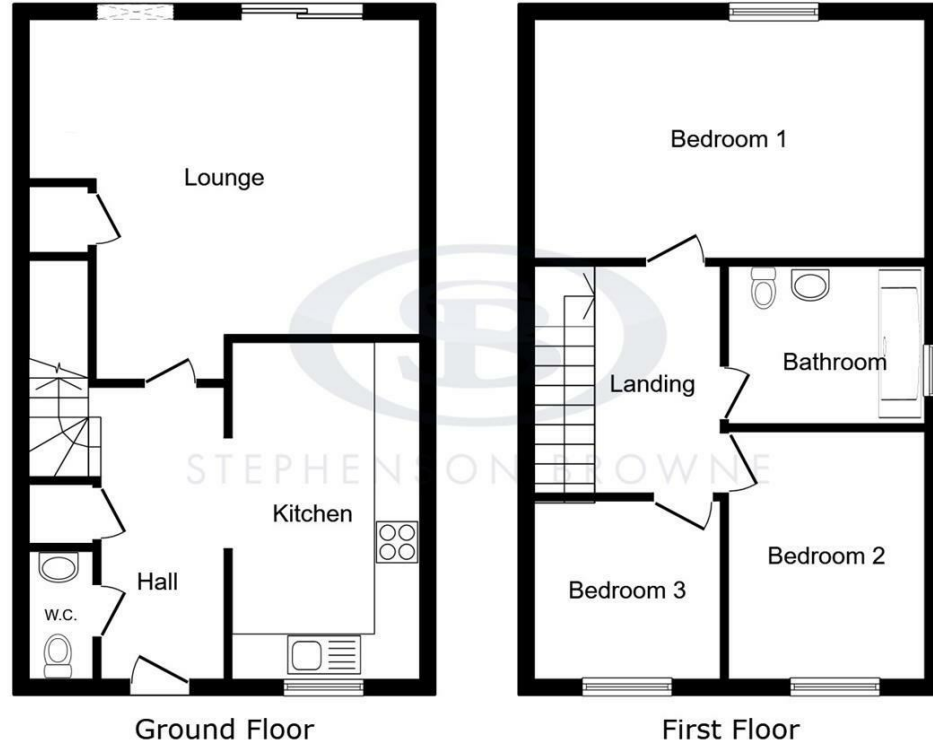


Viewing

Please contact our office using the details provided on the final page if you are interested in booking a viewing or require further information.

Floorplans

15 Wordsworth Way, Alsager, ST7 2NU



This floor plan is for illustrative purposes only. It is not drawn to scale. Any measurements, floor areas (including any total floor area), openings and orientations are approximate. No details are guaranteed, they cannot be relied upon for any purpose and do not form any part of any agreement. No liability is taken for any error, omission or misstatement. A party must rely upon its own inspection(s). Powered by www.Propertybox.io



Area Map



Energy Efficiency Rating		Current	Potential
Very energy efficient - lower running costs			
(92 plus) A			96
(81-91) B		84	
(69-80) C			
(55-68) D			
(39-54) E			
(21-38) F			
(1-20) G			
Not energy efficient - higher running costs			
England & Wales		EU Directive 2002/91/EC	

Environmental Impact (CO ₂) Rating		Current	Potential
Very environmentally friendly - lower CO ₂ emissions			
(92 plus) A			
(81-91) B			
(69-80) C			
(55-68) D			
(39-54) E			
(21-38) F			
(1-20) G			
Not environmentally friendly - higher CO ₂ emissions			
England & Wales		EU Directive 2002/91/EC	

NOTICE: Stephenson Browne for themselves and for the vendors or lessors of this property whose agents they are give notice that: (1) the particulars are set out as a general guideline only for the guidance of intending purchasers or lessees, and do not constitute, nor constitute part of, an offer or contract; (2) all descriptions, dimensions, references to condition and necessary permissions for use and occupation, and other details are given in good faith and are believed to be correct but any intending purchasers or tenants should not rely on them as statements or representations of fact but must satisfy themselves by inspection or otherwise as to the correctness of each theme; (3) no person in the employment of Stephenson Browne has any authority to make representation or warranty whatever in relation to this property. (4) fixtures & fittings are subject to a formal list supplied by the vendors solicitors. **Referring to:** Move with Us Ltd **Average Fee:** £123.64

T: 01270 883130 opt 2 E: alsagerlettings@stephensonbrowne.co.uk

www.stephensonbrowne.co.uk