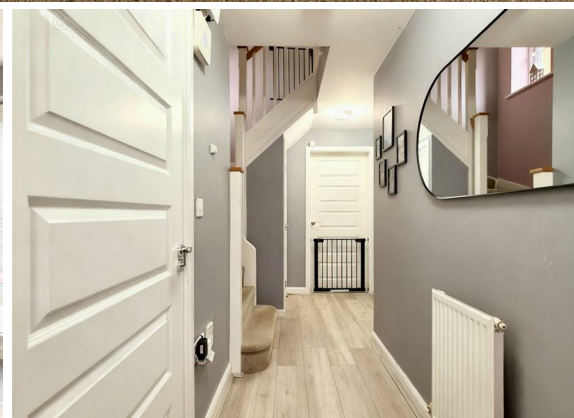


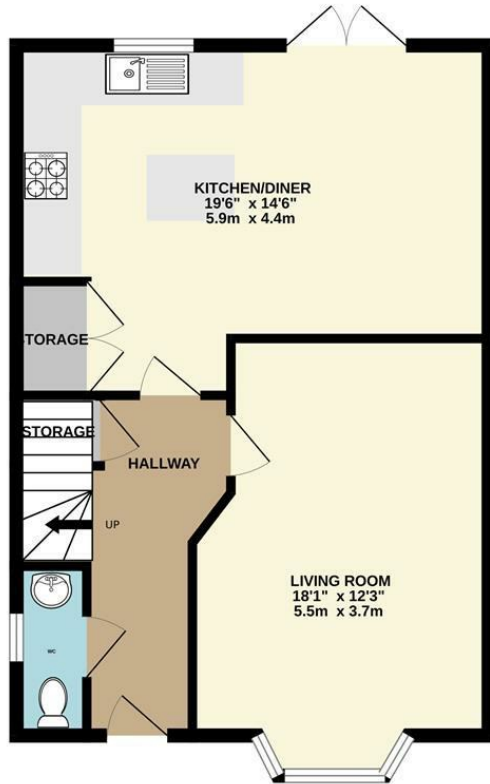


**4 Bed
House - Detached
located
in Brampton
Bierlow**

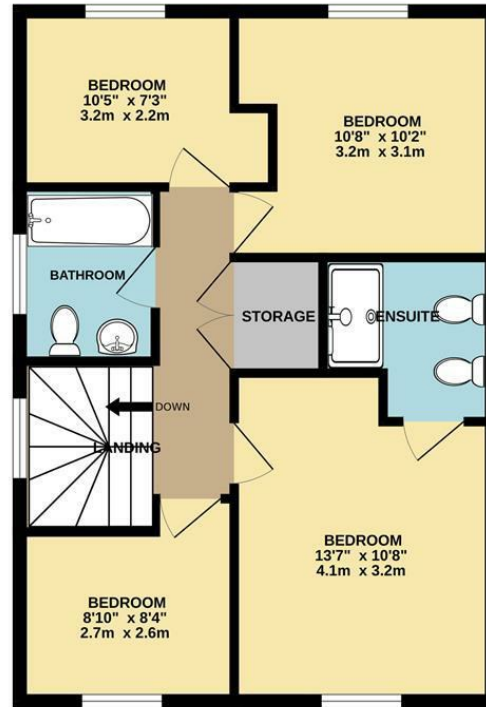
Guide price £275,000



GROUND FLOOR
565 sq.ft. (52.5 sq.m.) approx.



1ST FLOOR
556 sq.ft. (51.7 sq.m.) approx.



TOTAL FLOOR AREA : 1121 sq.ft. (104.2 sq.m.) approx.

Whilst every attempt has been made to ensure the accuracy of the floorplan contained here, measurements of doors, windows, rooms and any other items are approximate and no responsibility is taken for any error, omission or mis-statement. This plan is for illustrative purposes only and should be used as such by any prospective purchaser. The services, systems and appliances shown have not been tested and no guarantee as to their operability or efficiency can be given.
Made with Metroplex ©2026

Energy Efficiency Rating		
	Current	Potential
Very energy efficient - lower running costs		
(92 plus) A		92
(81-91) B	81	
(69-80) C		
(55-68) D		
(39-54) E		
(21-38) F		
(1-20) G		
Not energy efficient - higher running costs		
EU Directive 2002/91/EC		
England & Wales		

DIRECTIONS

CONTACT

Unit 6
Century 2 Business Centre 3 Dearne Lane
Manvers
Rotherham

E: info@burrowsresidential.co.uk
T: 07507 905644

