



TO LET

Seven Sisters Lane, Ollerton



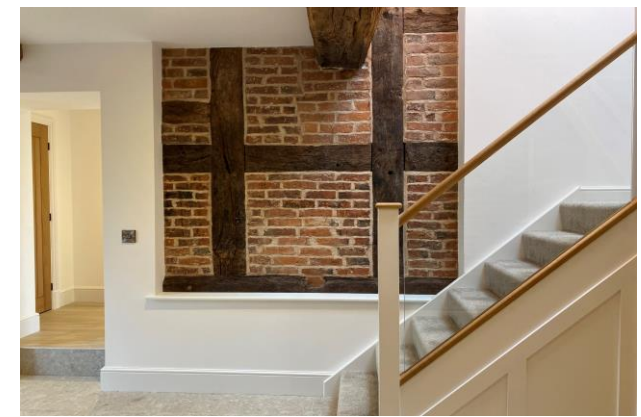




# Knutsford WA16 8FQ

## Seven Sisters, Ollerton

### £3,000 PCM



### The Property

Situated in a picturesque semi-rural setting, just outside of Knutsford Town Centre, is an exclusive enclave of four empathetically converted barns. Every inch of the development has been well thought out to provide sophisticated and modern living accommodation that cohesively offers modern fixtures and fittings whilst remaining empathetic to retaining classic period features such as solid oak doors and beams, and exposed brickwork. Privacy is instantly established via gated electronic gates over a rolling tarmac driveway to private parking for residents to the rear. Particular mention must be made of the extensive living accommodation this beautiful Grad II Listed barn conversion offers: a generous open plan living dinning kitchen with integrated appliances, marble worktops and complete with

log burner, generous Utility room, Downstairs WC and Master suite with en-suite bathroom to the ground floor. The spacious gallery landing offers an additional dressing or study space and then a further generous second bedroom and separate shower room. The garden is of generous proportions, laid to lawn in the main with a perfectly situated terrace allowing for al fresco dining and stunning views across rural Cheshire.

### Directions

From the roundabout at Canute Place Head towards princess street and head right onto princess street, before tuning left onto Toft Road, take left down Adam's Hill along brook street before continuing straight onto Chelford road for 2.1 miles before tuning right onto Seven Sisters lane. The entrance to Manor Farm will appear on your left and the gated entrance to right will take you along the driveway to the rear of the property.

- Meticulously converted Grad II Lister Barn
- Situated a short distance from Knutsford Town Centre
- State of the art kitchen with integrated appliances
- Two generous double bedrooms
- Two Modern Bathrooms
- Underfloor heating to ground floor
- Period Features Throughout
- Unfurnished
- Available April

**Postcode** – WA16 8FQ

**EPC Rating** – C

**Local Authority** – Cheshire East

**Council Tax** – Band G







103 King Street, Knutsford, Cheshire, WA16 6EQ

01565 654 000

E: [info@irlamsestateagents.co.uk](mailto:info@irlamsestateagents.co.uk)

[www.irlamsestateagents.co.uk](http://www.irlamsestateagents.co.uk)

I1021\_ Printed by Ravensworth 01670 713330

Irlams (Estate Agents) Ltd for themselves and for the vendors or lessors of this property whose agents they are give notice that:

- (a) The particulars are set out as a general outline only for the guidance of intending purchasers or lessees, and do not constitute, nor constitute part of, an offer or contract;
- (b) All descriptions, dimensions, references to condition and necessary permissions for use and occupation, and other details are given in good faith and are believed to be correct but any intending purchasers or lessees should not rely on them as statements or representations of fact, but must satisfy themselves by inspection or otherwise as to the correctness of each of them;
- (c) No person in the employment of Irlams (Estate Agents) Ltd has any authority to make or give any representation or warranty whatsoever in relation to this property.

