



Oxford Crescent, Didcot, Oxfordshire. OX11 7AX



Oxford Crescent, Didcot.

Hodsons are delighted to bring to the market this extended three bedroom mid terrace property situated in a quiet cul-de-sac on Oxford Crescent, Didcot. Extended by the current vendors the property offer comfortable living space comprising of a useful entrance porch with space for coats and shoes, the comfortable lounge has a feature fire place and leads through into the dining room which has a generous storage cupboard and provides a lovely space perfect for family meal times. The kitchen has been upgraded and provides ample storage and looks out over the mature garden. The family bathroom is situated on the ground floor. The first floor offers the generous main bedroom with useful storage cupboard and two further bedrooms. There is driveway parking to the front of the property for 2 cars. The mature garden is mainly laid to lawn with shrubs and flower beds.

Situated on Oxford Crescent the property is within walking distance of Stephen Freeman Primary School and Didcot Girls School and close to the town centre and Didcot Train station. There are excellent transport links via the local bus routes, the A34 and in turn to the M4 and M40



- Extended three bedroom mid terrace property situated in a quiet cul-de-sac.
- Comfortable lounge with feature fireplace.
- Upgraded kitchen with good storage and space for white goods and looking out over the garden.
- Dining room with generous storage cupboard.
- Generous main bedroom with useful storage cupboard.
- Driveway parking for 2 cars to the front of the property.
- Established mature rear garden, mainly laid to lawn with shrubs and flower beds.

3		bedrooms	Council Tax Band: B
2		receptions	Tenure: Freehold
1		bathrooms	EPC Rating: D



The comfortable lounge has a feature fire place and leads through into the dining room which has a generous storage cupboard and provides a lovely space perfect for family meal times.



A generous main bedroom with useful storage cupboard and two further bedrooms.







The mature garden is mainly laid to lawn with shrubs and flower beds.



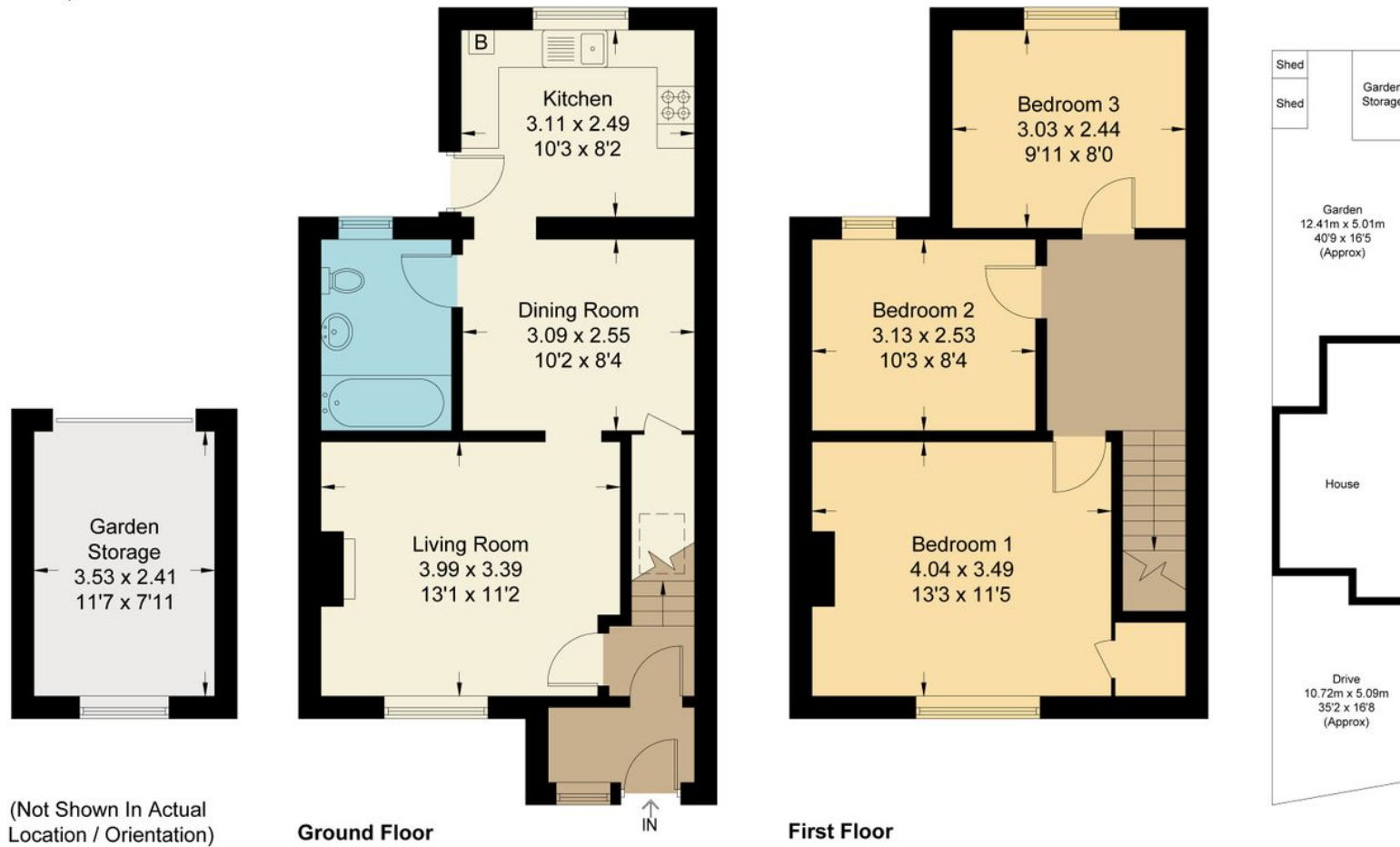
Oxford Crescent, OX11

Approximate Gross Internal Area = 80.30 sq m / 864 sq ft

Garden Storage = 8.50 sq m / 91 sq ft

Total = 88.80 sq m / 955 sq ft

For identification only - Not to scale



(Not Shown In Actual Location / Orientation)

Not to scale, for illustration and layout purposes only.
© Mortimer Photography. Produced for Hodsons.
Unauthorised reproduction prohibited