



Westlake Rotherhithe New Road, London.
London

In Excess of £325,000
OLIVER *OJ* JAUQUES
EST. 1986

Westlake Rotherhithe New Road, London

Council Tax band: B

Tenure: Leasehold

EPC Energy Efficiency Rating: C

EPC Environmental Impact Rating: A

- Water & heating included within the service charge
- Raised-ground floor
- Private garden
- 177 year lease
- Excellent location
- 0.1m Southwark Park
- 0.4m Surrey Quays station
- 0.5m South Bermondsey station

Tenure

Leasehold

Lease Expiry

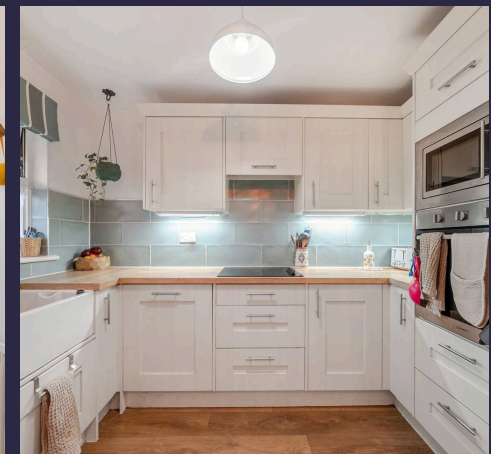
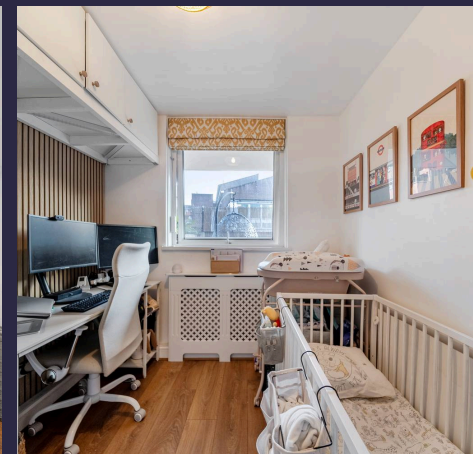
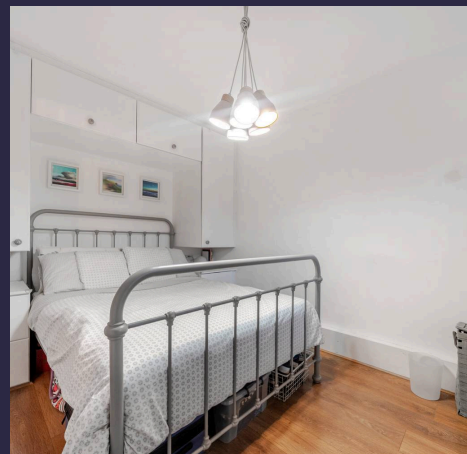
18/04/2203

Ground Rent

£0

Service Charge

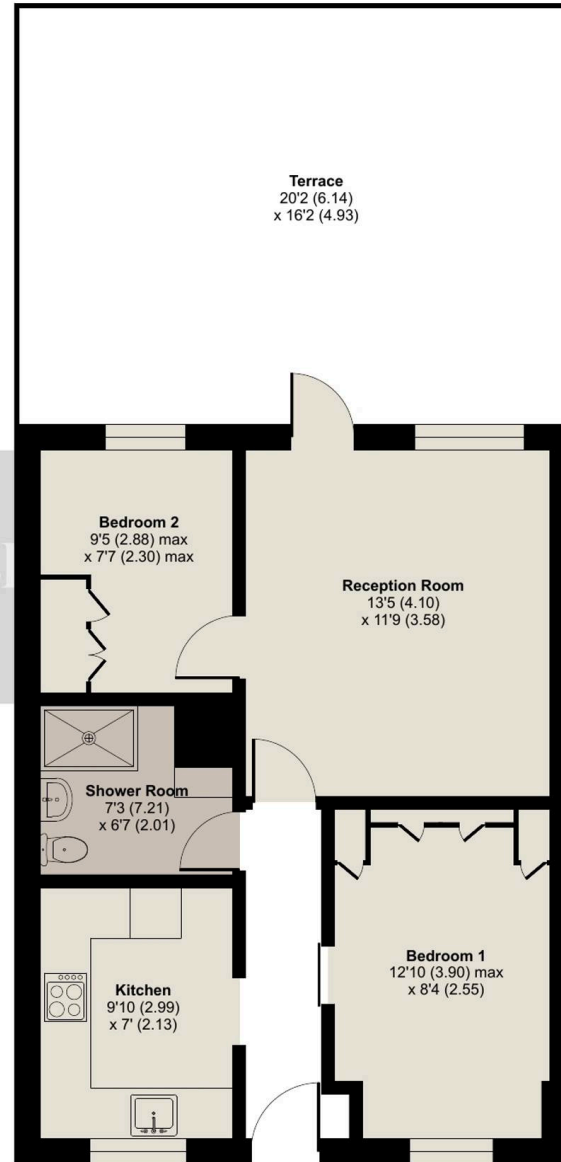
£3,707.00 per year



Rotherhithe New Road, London, SE16

Approximate Area = 529 sq ft / 49.1 sq m

For identification only - Not to scale



GROUND FLOOR



Floor plan produced in accordance with RICS Property Measurement 2nd Edition, Incorporating International Property Measurement Standards (IPMS2 Residential). © n1cheom 2026. Produced for Oliver Jaques. REF: 1424445



Oliver Jaques

Oliver Jaques, 229-231 Lower Road - SE16 2LW

02072315050 • southeast@o-j.co.uk • o-j.co.uk/

Every care has been taken with the preparation of this brochure but it is for general guidance and complete accuracy can't be guaranteed. Prospective purchasers should seek clarification from their solicitor. The mention of any appliances fixtures or fittings does not imply they are in working order.