



ESTATE AGENTS

www.cwestateagents.co.uk



6 Mayfield Drive, Winsford CW7 3RP

Offers over £160,000



Step right in, because this one is an absolute little gem and bursting with kerb appeal from the moment you arrive!

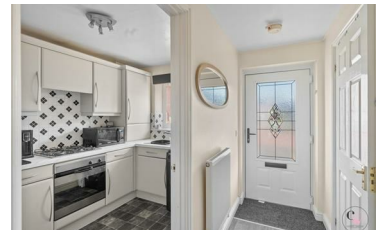
You've got the convenience of parking to the front plus an additional separate parking space – always a huge bonus! Inside, you're welcomed by a bright hallway leading through to a lovely kitchen at the front, and a handy downstairs WC.

To the rear, the home really comes into its own... a spacious lounge diner flowing beautifully into a gorgeous orangery – the perfect spot for relaxing or entertaining – all overlooking a super cute, low-maintenance garden.

Upstairs, you'll find two fantastic double bedrooms, with the main bedroom boasting a stunning arched window that floods the room with natural light – such a beautiful feature! Completing the floor is a family bathroom.

This is one of those homes that just feels right the moment you walk in... stylish, practical and ready to move straight into. Trust me, this is one not to be missed!

- Two Double Bedrooms
- Beautiful Arched Window In Bedroom One
- Walking Distance To Local Shops
- Wharton Area Of Winsford
- Conservatory At The Rear
- Enclosed Rear Garden



01606 514 152 info@cwestateagents.co.uk

@CWestateAgent @CWestateAgents