

Guide Price £560,000



12 Tiverton Road, Silvertown, Exeter, Devon, EX5 4JQ

- Panoramic countryside views from the principal rooms
- Principal bedroom with superb en-suite bathroom
- Fourth bedroom with French doors to front
- High quality garden office installed 2021 & well landscaped garden
- Biomass heating boiler installed in 2022
- Superb four aspect sitting room with 5Kw wood burner
- Two bedrooms downstairs with bathroom & study
- System Six kitchen with Neff integrated appliances
- 2.7kW Solar PV panels for hot water & car charging
- No onward chain

Sales, Lettings, Mortgages:

Bampton 01398 332006 | Cullompton 01884 32100 | Tiverton 01884 253500

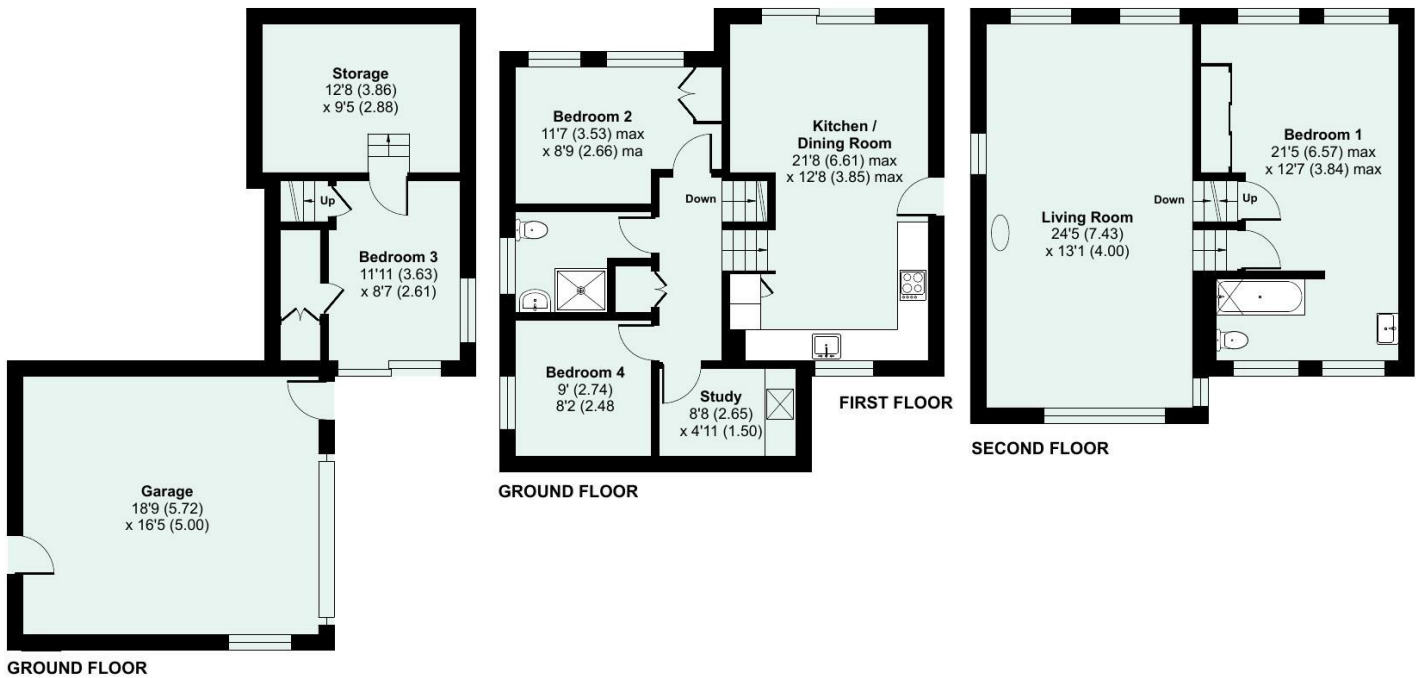


[*Watch the Seddons Video Tour*](#)

A rare and architect-designed detached home in the sought-after Exe Valley village of Silverton, offering panoramic countryside views, energy-efficient credentials, and a uniquely versatile split-level layout that opens up possibilities for work-life balance.



Approximate Area = 1487 sq ft / 138.1 sq m
 Garage = 308 sq ft / 28.6 sq m
 Total = 1795 sq ft / 166.7 sq m
 For identification only - Not to scale



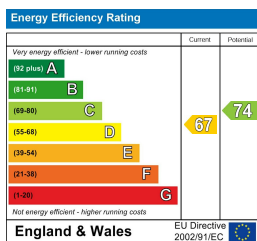
Floor plan produced in accordance with RICS Property Measurement 2nd Edition, Incorporating International Property Measurement Standards (IPMS2 Residential). © ncthecom 2026. Produced for Seddon Estate Agents LLP. REF: 1424790



Council Tax Band

E

EPC Rating



Viewings

Viewings by arrangement only. Please call 01884 32100 to make an appointment.