



Lulworth Road Hall Green, Birmingham

- A Beautifully Presented Three Bedroom Family Home
- Extended & Re-Fitted Kitchen/Diner & Family Bathroom
- Southerly Facing Rear Garden
- Side Store & Ample Driveway Parking

£400,000

Current EPC Rating - C
Current Council Tax Band - C





Property Description

A very well presented and extended semi-detached family home situated in a most popular location. Offering accommodation comprising a spacious though lounge/diner, sitting room, modern extended breakfast kitchen, utility room, guest W.C, store room, three bedrooms, re-fitted family bathroom, separate W.C, Southerly facing rear garden and driveway parking



Rooms & Measurements

Spacious Through Lounge/Diner 8.9m x 3.5m (29'2" x 11'5")

Sitting Room to Front 4.5m x 2m (14'9" x 6'6")

Modern Extended Breakfast Kitchen to Rear 5.8m x 3.7m (19'0" x 12'1")

Utility Room 4.3m x 3.1m max (14'1" x 10'2" max)

Store Room 2.5m x 2.4m (8'2" x 7'10")

Bedroom One to Rear 4.4m x 2.9m (14'5" x 9'6")

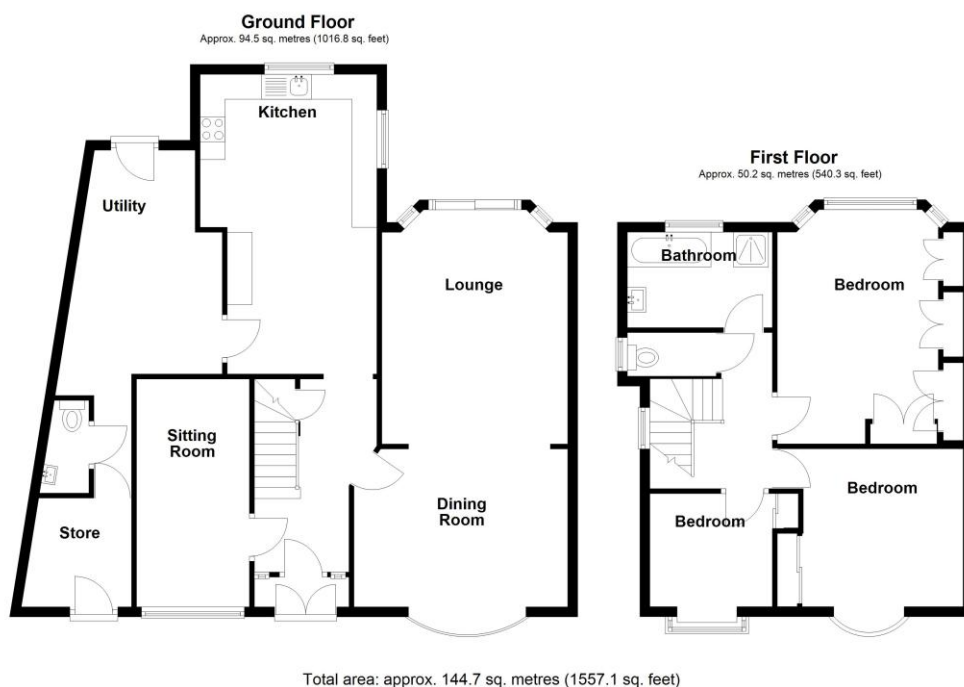
Bedroom Two to Front 4.3m x 3.5m (14'1" x 11'5")

Bedroom Three to Front 3m x 2m (9'10" x 6'6")

Re-Fitted Family Bathroom to Rear 2.4m x 1.7m (7'10" x 5'6")

Tenure

We are advised by the vendor that the property is freehold. We would advise all interested parties to obtain verification through their own solicitor or legal representative. EPC supplied by Nigel Hodges. Current council tax band – C



316 Stratford Road
Shirley
Solihull
B90 3DN

www.smart-homes.co.uk
0121 744 4144

Agents Note: Whilst every care has been taken to prepare these particulars, they are for guidance purposes only. We believe all information to be correct from the day of marketing however, we advise and recommend that your conveyancer and or surveyor verifies all information supplied. All measurements are approximate are for general guidance purposes only and whilst every care has been taken to ensure their accuracy, they should not be relied upon and potential buyers are advised to recheck the measurements.