

NO ONWARD CHAIN. Spacious two double bedroom modern park home for over 45's with ensuite facility, modern kitchen and bathroom, driveway for parking, excellent communal facilities including indoor and outdoor swimming pools / clubhouse / gym / Jacuzzi.

The Accommodation Comprises:-

Front door with obscured double glazed panel inset with matching panels to side into entrance area.

Kitchen/Dining Room:- 19' 4" x 16' (5.89m x 4.87m)

Double glazed windows to front and rear elevations, double glazed door giving access to rear, range of base and eye level units with work surfaces, one and a half bowl sink unit with mixer tap, fridge/freezer, dishwasher, breakfast bar, oven, integrated washing machine, grill, hob and extractor hood over, gas central heating boiler enclosed within wall unit. Dining area with radiator and space for table and chairs, double opening doors into:

Lounge:- 19' 4" x 11' 10" (5.89m x 3.60m)

Double glazed windows to front and side elevations, flat ceiling inset spot lighting, radiator, fireplace.

Bedroom 1:- 9' 10" x 9' 5" (2.99m x 2.87m)

Double glazed windows to front elevation, radiator, fitted bedroom furniture, dressing area with fitted wardrobes, fitted dressing table, door into:

Ensuite Shower Room:- 6' 5" x 5' 7" (1.95m x 1.70m)

Obscured double glazed window to front elevation, chrome heated towel rail, radiator, extractor fan, tiled, shower cubicle, close coupled W.C. wash hand basin, inset vanity unit, mirror.

Bedroom 2:- 10' 9" x 9' 5" (3.27m x 2.87m) Maximum Measurements
Double glazed window to rear elevation, fitted bedroom furniture including wardrobe, bedside cabinets over-bed recess, dressing table.

Bathroom:- 10' 2" x 9' 4" (3.10m x 2.84m) Maximum Measurements
Window to rear elevation, ceiling inset spot lighting, raised Jacuzzi bath, closed coupled W.C. with concealed cistern, wash hand basin inset vanity unit, radiator, mirror, chrome heated towel rail, wall fitted television.

Outside:-

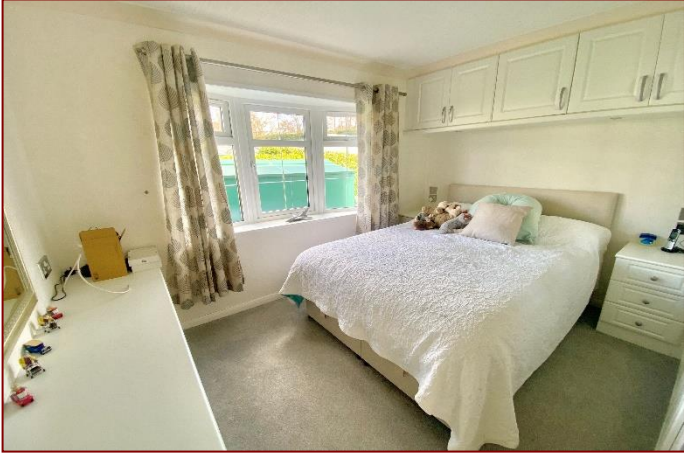
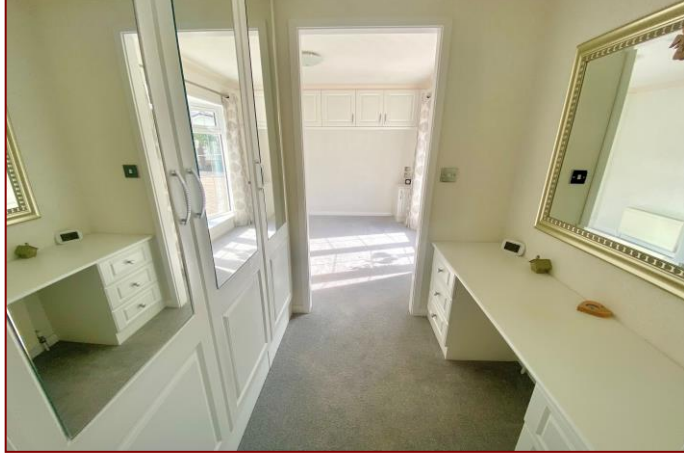
Steps to the front, leading to front door, off road parking, driveway to the side, for off road parking, laurel hedging. Rear garden is enclosed and laid to astroturf, garden shed, outside light and power.

Wickham Court:-

Wickham Court epitomises Park Life Style with excellent recreational facilities to enjoy within its fabulous 11 acre setting, including indoor and outdoor swimming pools, gymnasium, jacuzzi and club house. This property is leasehold.

Nota Bene

Council Tax Band: - Winchester City Council. Tax Band A
Tenure: - Residential Licence Maintenance £2,616 per annum
Property Type: - Park Home
Electricity Supply: - Mains
Gas Supply: - Regularly replenished container
Water Supply: - Mains
Sewerage: - Mains with Site Septic Tank
Heating: - Central Heating
Broadband - Currently supplied by BT. Average available download speed for this Postcode of 1000MB: Potential broadband speeds
- <https://www.openreach.com/fibre-broadband>
Mobile signal: Available - check here for all networks
- <https://checker.ofcom.org.uk/>
Parking: Driveway
Flood Risk: - Check at the Environment Agency's website (<http://www.environment-agency.gov.uk/homeandleisure/floods/31656.aspx>)?
Fenwicks Estate Agents has further information as provided by current vendor





Disclaimer: These particulars are set out as a general outline in accordance with the Consumer Protection from Unfair Trading Regulations 2008 (CPR's) and Business Protection from Misleading Marketing Regulations 2008 (BPR's) only for the guidance of intending purchasers or lessees, and do not constitute any part of an offer or contract. Details are given without any responsibility, and any intending purchasers, lessees or third parties should not rely on them as statements or representations of fact, but must satisfy themselves by inspection or otherwise as to the correctness of each of them.

We have not carried out a structural survey and the services, appliances and specific fittings have not been tested. All photographs, measurements, floor plans and distances referred to are given as a guide only and should not be relied upon for the purchase of carpets or any other fixtures or fittings. Gardens, roof terraces, balconies and communal gardens as well as tenure and lease details cannot have their accuracy guaranteed for intending purchasers. Lease details, service ground rent (where applicable) are given as a guide only and should be checked and confirmed by your solicitor prior to exchange of contracts.

No person in the employment of Fenwicks Estates Ltd has any authority to make any representation or warranty whatever in relation to this property. Purchase prices, rents or other prices quoted are correct at the date of publication and, unless otherwise stated, exclusive of VAT.

Data Protection: We retain the copyright in all advertising material used to market this Property.
Money Laundering Regulations 2017: Intending purchasers will be required to produce identification documentation once an offer is accepted.



£275,000
 20 Wickham Court, North Boarhunt, Fareham, PO17 6JX
 Fenwicks - Fareham Office: 01329 285 500 www.fenwicks-estates.co.uk

Fenwicks
 THE INDEPENDENT ESTATE AGENT