



Hoop Lane, Golders Green, NW11
£660,000

moreland 





Exclusive listing for this spacious two-double-bedroom ground-floor garden maisonette. Occupying the entire ground floor of this detached house set back from the road on a large plot with a driveway providing ample parking and an additional private garage. Direct access from the principal bedroom and kitchen to a private garden, with potential to extend on the rear (STPP).

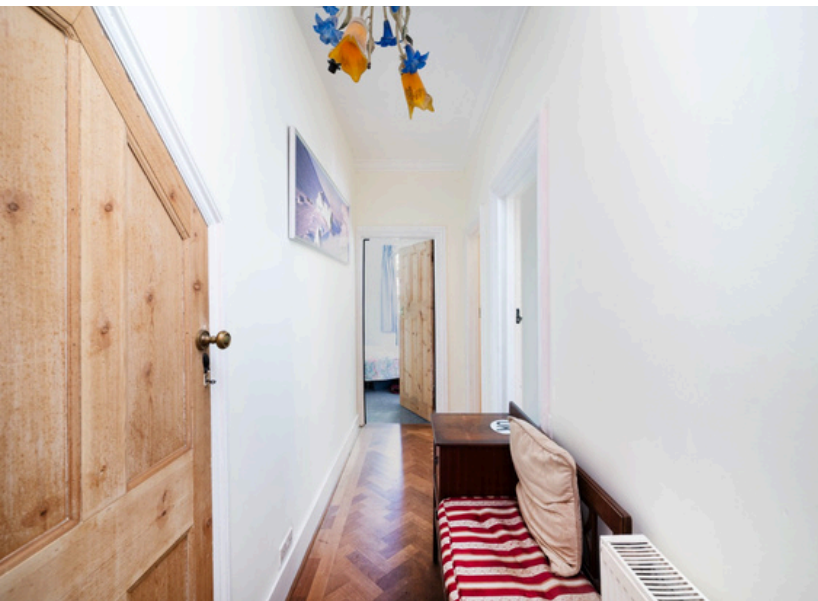
Extending to 1012 SQFT / 94 SQM.

Comprising a front door leading to a large hallway, a spacious reception room, a large modern kitchen/dining room with integrated appliances, a utility room, and doors leading to the garden. There is a double bedroom with doors opening onto the garden, a second double bedroom, and a bathroom.

Outside, there is a large driveway with parking for three plus vehicles leading to a side driveway and a garage.

Also, your own private south-facing rear garden. The living, kitchen and hallway have been recently decorated and there is parquet flooring in the main double bedroom, reception room and hallway.

Conveniently located on the edge of Hampstead Garden Suburb, within a short walk of Golders Green tube station and the Heath extension and the variety of shopping facilities on Golders Green Road and Temple Fortune. including cafés, coffee shops and restaurants. Regular bus/coach routes into and out of central London and major airports.



Size - 1012 SQFT / 94 SQM



2 Bedrooms

Tenure -Leashold with 50%
Share of Freehold



1 Bathroom

Council - Barnet



1 Reception

Tax Band - D

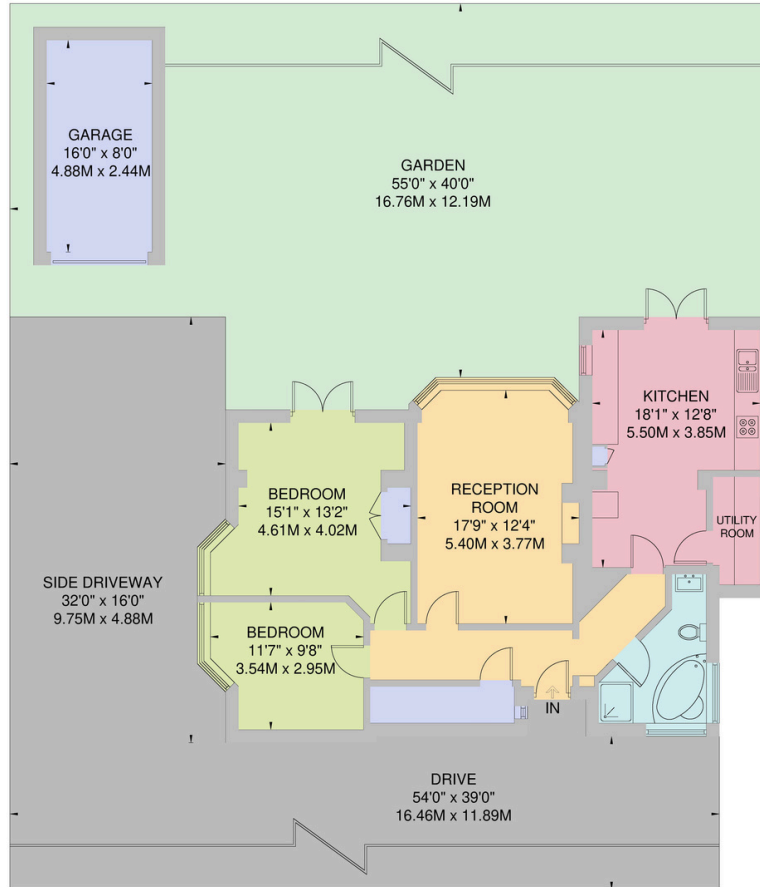
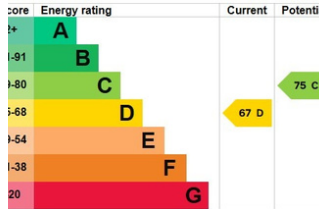


Garage and Drive





Hoop lane, Golders Green, NW11
 Approximate Gross Internal Area = 94 sq m / 1012 sq ft
 Garage = 12.0 sq m / 129 sq ft
 Total = 106 sq m / 1141 sq ft



GARAGE
 12.0 sq m / 129 sq ft

GROUND FLOOR
 91.6 sq m / 986 sq ft

moreland

At Moreland, our mission is to deliver a trusted, professional, and personalised property service by combining deep local expertise with clear communication and a genuine commitment to our clients' best interests.

We strive to make every property journey smooth, transparent, and successful, building long-term relationships through integrity, knowledge, and exceptional customer care.

020 8381 4970

info@morelandestateagents.co.uk

Moreland Estates Ltd is a company registered in England and Wales with company number 03663497

Trading Address is: 903 - 905 Finchley Road, Golders Green, London, NW11 7PE

VAT Registration Number: GB 701 775 936

Registered Office is: Unit 8 Alpha Business Park, Travellers Close, Welham Green, Hertfordshire, AL9 7NT

