



Coppice Road | Rugeley | WS15 1LT

Offers In Excess Of £140,000

 **Webbs**
estate agents

Summary

** NO CHAIN ** IN NEED OF MODERNISATION ** POPULAR LOCATION ** IDEAL FOR FIRST TIME BUYERS ** THREE BEDROOMS ** CLOSE TO SCHOOLS & AMENITIES ** OFF ROAD PARKING ** REAR GARDEN **

WEBBS ESTATE AGENTS are pleased to market this three bedroom, mid terrace property on a popular part of the Pear Tree Estate on Coppice Road. The property is in need of modernisation and would ideally suit a first time buyer looking to get their foot on the property ladder. Located close to amenities, schools, useful transport links and much more! The internal accommodation briefly comprises; entrance hall, kitchen, living/ dining room, three bedrooms and a family bathroom. The property also benefits from a good size rear garden and the added benefit of off road parking.

Key Features

- NO CHAIN
- POPULAR LOCATION
- THREE BEDROOMS
- OFF ROAD PARKING
- IN NEED OF MODERNISATION
- IDEAL FOR FIRST TIME BUYERS
- CLOSE TO SCHOOLS & AMENITIES
- REAR GARDEN

Rooms and Dimensions

Hallway

Living Room

19'8 x 9'11 (5.99m x 3.02m)

Kitchen

16'9 x 11'3 (5.11m x 3.43m)

Landing

Bedroom 1

10'4 x 11'5 (3.15m x 3.48m)

Bedroom 2

8'11 x 13'8 (2.72m x 4.17m)

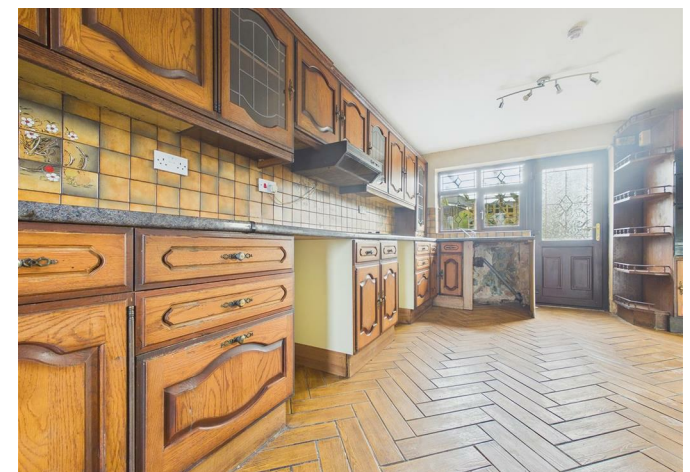
Bedroom 3

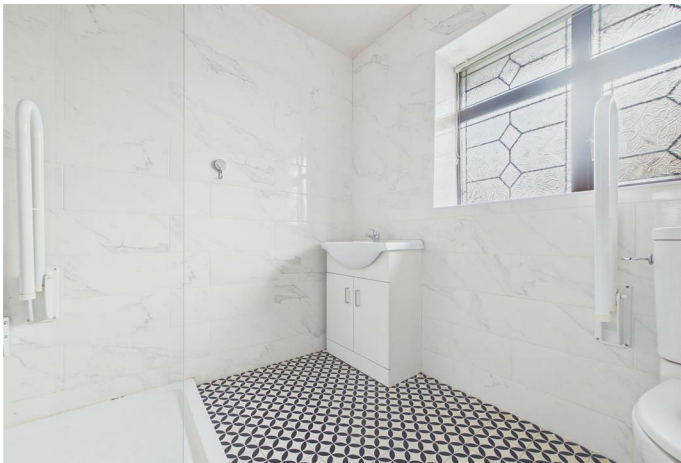
10'8 x 6'4 (3.25m x 1.93m)

Bathroom

5'7 x 7'3 (1.70m x 2.21m)

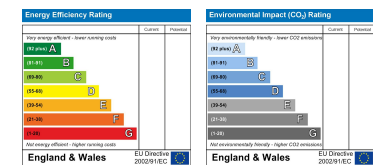
Rear Garden







Webbs Estate Agents - endeavour to maintain accurate depictions of properties in Virtual Tours, Floor Plans and descriptions, however, these are intended only as a guide and purchasers must satisfy themselves by personal inspection.



Globe House Upper Brook Street, Rugeley, Staffordshire, WS15 2DN

Tel: 01889 583377 | Email: rugeley@webbsea.co.uk | www.webbestateagents.co.uk