
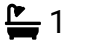

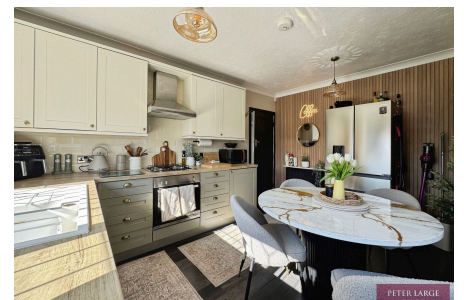
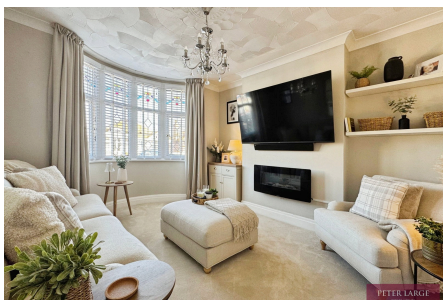


## 39 Regent Road, Rhyl, Denbs LL18 4BB

Offers In Region Of £200,000

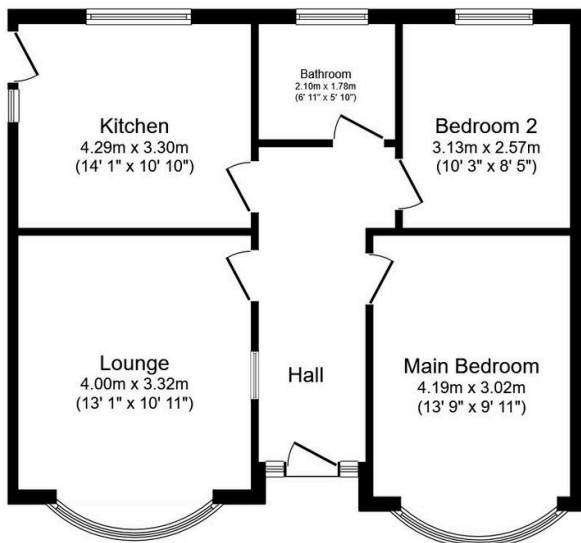
 2  1  1



This well maintained two bedroom detached bungalow is situated in a quiet residential area close to the town of Rhyl with its shops and public amenities. The bungalow has been tastefully upgraded by the present owner to include a warm welcoming lounge, two double bedrooms, bathroom and good size kitchen diner. Having a secure and sunny rear garden and off road parking to the front early viewing is highly recommended.

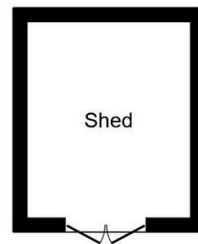
## Key Features

- DETACHED BUNGALOW
- TWO DOUBLE BEDROOMS
- LARGE KITCHEN/DINER
- GOOD SIZE REAR GARDEN
- OFF ROAD PARKING.
- CLOSE TO SCHOOLS
- SOUGHT AFTER AREA
- EPC RATING - D
- COUNCIL TAX BAND - C
- INSTRUCTED - 19/03/26 P/R 31/03/2026 PR 10/04/2026 PR 27/04/2026

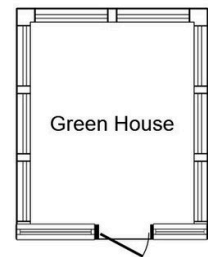


**Floor Plan**

Floor area 61.9 sq.m. (666 sq.ft.)



**Shed**



**Green House**

**Outbuilding**

Floor area 15.3 sq.m. (164 sq.ft.)

**Total floor area: 77.1 sq.m. (830 sq.ft.)**

This floor plan is for illustrative purposes only. It is not drawn to scale. Any measurements, floor areas (including any total floor area), openings and orientations are approximate. No details are guaranteed, they cannot be relied upon for any purpose and do not form any part of any agreement. No liability is taken for any error, omission or misstatement. A party must rely upon its own inspection(s). Powered by [www.Propertybox.io](http://www.Propertybox.io)