



7 Birch Close

Willesborough Ashford, TN24 0RQ

Guide Price £300,000

GUIDE PRICE £300,000 - £320,000

A most pleasantly appointed semi-detached home in a sought after cul de sac position, offered for sale with no onward chain.

The property comprises an entrance hall, cloakroom, sitting room, kitchen/dining room, conservatory, three bedrooms and bathroom/WC. The rear garden enjoys a notably secluded feel with a driveway and detached garage providing off road parking. Double glazing and gas central heating are installed whilst the property is in easy access for local schools shops and transport links.

Viewing

Please contact our Ashford Office on 01233 646411 if you wish to arrange a viewing appointment for this property or require further information.

- SEMI DETACHED HOUSE
- THREE BEDROOMS
- KITCHEN/DINING ROOM
- CONSERVATORY
- GROUND FLOOR CLOAKROOM
- DETACHED GARAGE & DRIVEWAY
- LOVELY ENCLOSED REAR GARDEN
- GAS CENTRAL HEATING & DOUBLE GLAZING
- CUL DE SAC POSITION
- NO ON WARD CHAIN

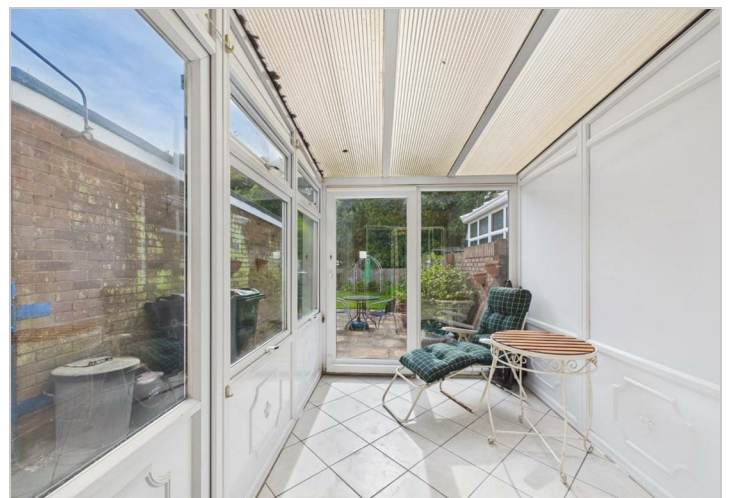
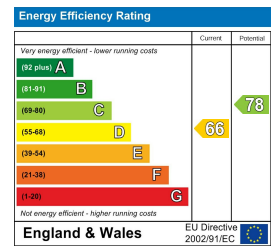
Floor Plan



Area Map



Energy Efficiency Graph



These particulars, whilst believed to be accurate are set out as a general outline only for guidance and do not constitute any part of an offer or contract. Intending purchasers should not rely on them as statements of representation of fact, but must satisfy themselves by inspection or otherwise as to their accuracy. No person in this firm's employment has the authority to make or give any representation or warranty in respect of the property.