



Norbury Close, SW16

£795,000

A well proportioned three double bedroom semi-detached family home on a highly desirable cul-de sac off of Green Lane. The home is well presented throughout with a high spec ground floor extension and fully fitted double

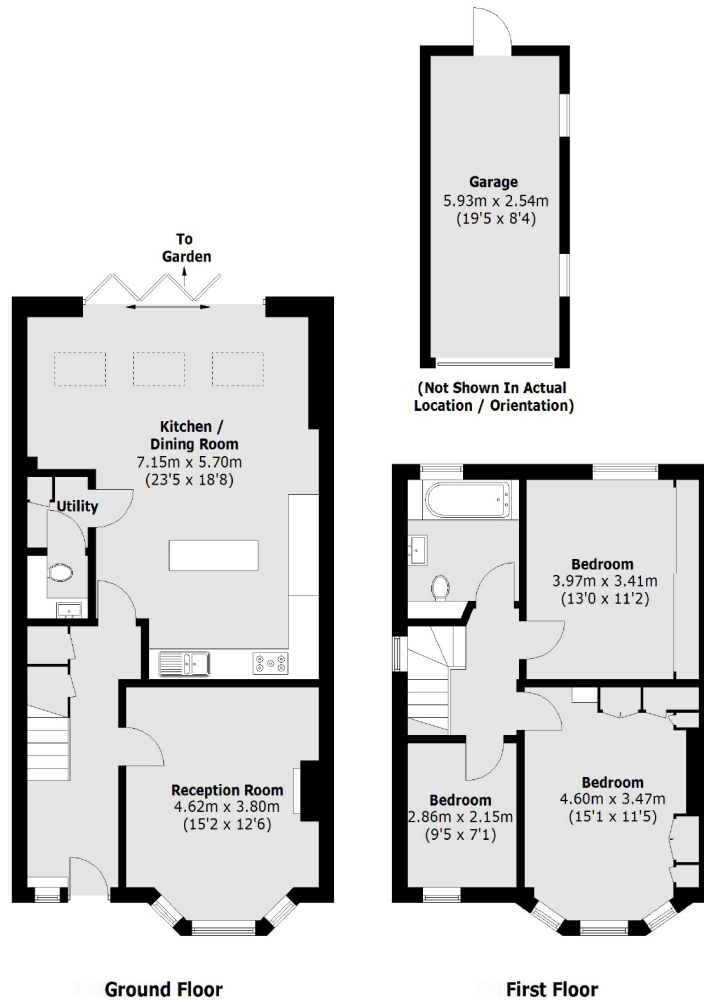
- Semi-Detached House
- Three Double Bedrooms
- Private Garden
- Great Condition
- Off Street Parking
- Garage



Norbury Close is a quiet residential street located nearby the green spaced of Norbury Park and Streatham Common. Streatham High Road is in close proximity, which is home to many amenities. Convenient transport links into the city are found at Norbury and Streatham Common Stations, along with the many bus routes found on Streatham High Road. Exceptional local amenities include shopping facilities, reputable schools, bus routes, restaurants, parkland, gyms and much more.







Total area (approx.): 114.4 sq. m (1,231.4 sq. ft)
Garage area: 15.2 sq. m (163.6 sq. ft)

Jacksons Streatham
1-3 De Montfort Parade
Streatham High Road
Streatham
London
SW16 1BU

Energy Rating: We aim to make our particulars both accurate and reliable. However they are not guaranteed; nor do they form part of an offer or contract. If you require clarification on any points then please contact us, especially if you're traveling some distance to view. Please note that appliances and heating systems have not been tested and therefore no warranties can be given as to their good working order.