



DALES & PEAKS



## 7 The Common

Crich, Matlock, DE4 5BH

£280,000



## 7 The Common

Crich, Matlock, DE4 5BH

A quaint 3 bedroom character cottage, right in the heart of the Peak District village of Crich. Located within close proximity of local amenities, the property offers 1689 sqft of well proportioned accommodation over 4 storeys and a low maintenance garden.

The lower ground floor comprises; Cellar, currently used as another reception room and games room.

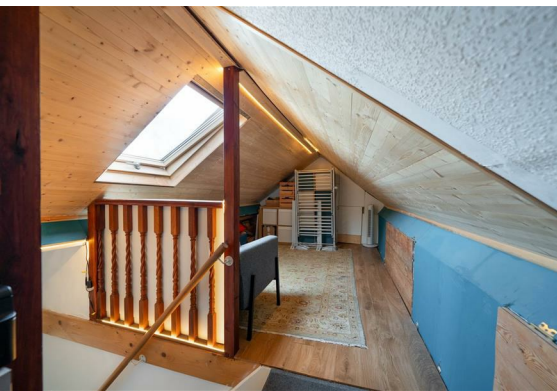
The ground floor comprises; Front aspect dining kitchen with integrated appliances and feature fireplace, separate utility room and downstairs WC. Living room with cast iron cooking range built into a stone fireplace surround.

The first floor comprises; Two double bedrooms, bathroom and single bedroom.

Attic; Currently used as a work from home space.

**Dales and Peaks ForwardMove - Please read**





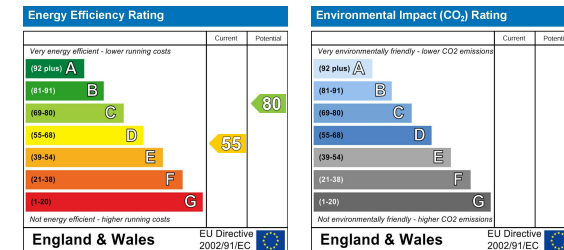
## Floor Plan



## Area Map



## Energy Efficiency Graph



## Viewing

Please contact our Chesterfield Office on 01246 567540 if you wish to arrange a viewing appointment for this property or require further information.

These particulars, whilst believed to be accurate are set out as a general outline only for guidance and do not constitute any part of an offer or contract. Intending purchasers should not rely on them as statements of representation of fact, but must satisfy themselves by inspection or otherwise as to their accuracy. No person in this firm's employment has the authority to make or give any representation or warranty in respect of the property.



131 Chatsworth Road, Chesterfield, Derbyshire, S40 2AP  
T: 01246 567540

E: info@dalesandpeaks.co.uk  
www.dalesandpeaks.co.uk