



## 3 bedroom Semi-Detached House located in Harwich .

Offers In Region Of  
**£275,000**

Find us on..



**JOHN ALEXANDER**  
ESTATE AGENTS



# Willow Way Harwich CO12 4HR



3



1



1



C



D



## FULL DESCRIPTION

### THE OVERVIEW

\*\*\*Offers in Region Of £275,000\*\*\*

Offered with no onward chain, this well-presented three-bedroom semi-detached home features a spacious lounge/dining area, a fitted kitchen, three first-floor bedrooms, and a family bathroom. Further benefits include a garage and driveway providing off-road parking. Early viewings are highly recommended.

### THE HOME

Stepping inside, the home welcomes you with a bright entrance hallway providing access to the ground-floor accommodation. The spacious lounge/dining area is flooded with natural light and benefits from double French doors opening directly onto the garden, creating an ideal space for both relaxing and entertaining. The kitchen is well laid out, offering generous worktop space and ample room for storage.

Upstairs, the property boasts three well-proportioned bedrooms, all offering comfortable living space, with a family bathroom completing the first floor.

### THE OUTSIDE

The exterior of the property is well maintained and attractively presented, offering off-road parking along with a garage. For added convenience, there is a useful side entrance providing direct access to the kitchen, alongside the main front entrance.

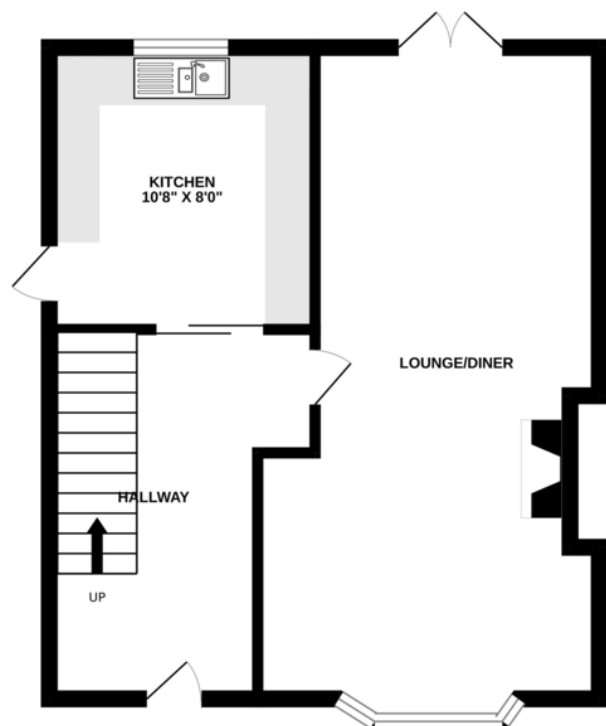
### THE LOCATION

The property is situated in a quiet and well-established area, offering a peaceful lifestyle while remaining conveniently close to schools and nearby amenities. Perfectly positioned for everyday living, it combines comfort, convenience, and a welcoming sense of home.

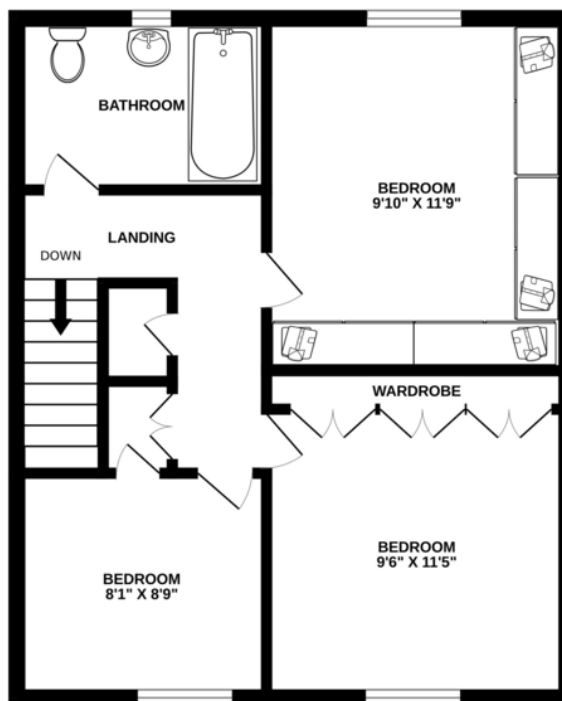


## FLOORPLAN

GROUND FLOOR



1ST FLOOR



Whilst every attempt has been made to ensure the accuracy of the floorplan contained here, measurements of doors, windows, rooms and any other items are approximate and no responsibility is taken for any error, omission or mis-statement. This plan is for illustrative purposes only and should be used as such by any prospective purchaser. The services, systems and appliances shown have not been tested and no guarantee as to their operability or efficiency can be given.  
Made with Metropix ©2026

## DIRECTIONS

### CONTACT

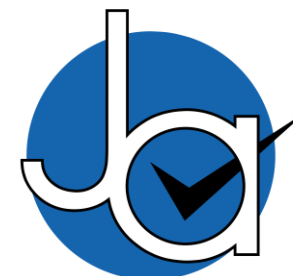
**288 High Street**  
**Harwich**  
**Essex**  
**CO12 3PD**

**E [enquiries@john-alexander.co.uk](mailto:enquiries@john-alexander.co.uk)**

**T 01255 520007**

**[www.john-alexander.co.uk](http://www.john-alexander.co.uk)**

Find us on..



**JOHN ALEXANDER**  
**ESTATE AGENTS**