



Foreminster Court Fore Street, Warminster

£200,000



Key Features

- End Of Chain
- Private Garden
- Kitchen Diner
- Single Garage
- Modernisation Opportunity
- EPC rating U
- Freehold





Exciting Modernisation Opportunity! End-Terrace House with Private Garden, Garage and Flexible Living Space

This end of terrace house is offered for sale in Warminster and represents a good opportunity for first time buyers, investors and families. The property needs modernising, providing scope for buyers to update to their own specification.

On the ground floor, there is a separate reception room and an open-plan kitchen with dining space and a breakfast area, offering a practical layout for everyday living.

There is also an additional utility room which offers potential for a variety of uses and also gives access to the garden.

Upstairs, there are two double bedrooms, one with built-in wardrobes and the other with a built-in cupboard, together with a single bedroom.

The bathroom includes a bath, toilet and sink. Externally, the property benefits from a private garden and a single garage.

The house is well placed for local public transport, with Warminster railway station providing direct services to Salisbury, Bath and Bristol. Typical journey times are around 20-25 minutes to Salisbury and approximately 35-45 minutes to Bath and Bristol, making it suitable for commuting or leisure travel.

Warminster offers a range of shops, cafes and everyday amenities, with additional facilities available in nearby towns by rail or road. There are schools in the local area, making the location practical for families. Nearby parks and green spaces, together with local walking and cycling routes, provide opportunities for outdoor recreation, including access to the wider Wiltshire countryside.

Council tax is currently band B.

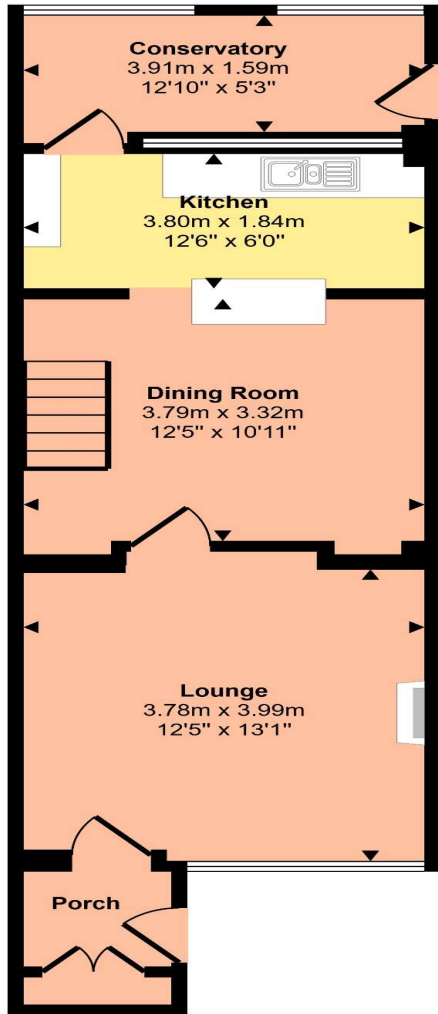




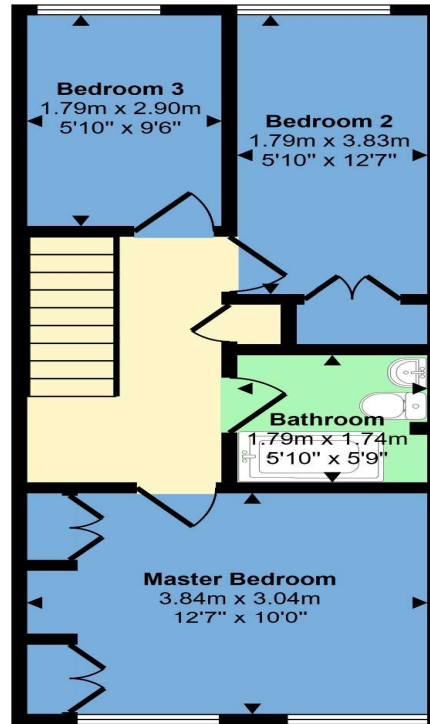




Approx Gross Internal Area
83 sq m / 898 sq ft



Ground Floor
Approx 47 sq m / 510 sq ft



First Floor
Approx 36 sq m / 388 sq ft

This floorplan is only for illustrative purposes and is not to scale. Measurements of rooms, doors, windows, and any items are approximate and no responsibility is taken for any error, omission or mis-statement. Icons of items such as bathroom suites are representations only and may not look like the real items. Made with Made Snappy 360.

