

HARRY CHARLES

Property Specialists



Chiswell Court, Watford, WD24 7PL

Price £275,000



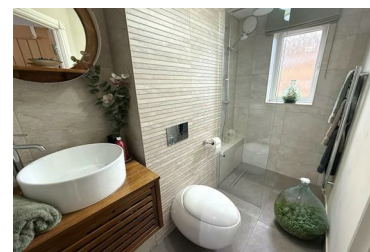
First Floor Two Bedroom Apartment – Chiswell Court - Council Tax Band C

Harry Charles Estate Agents are pleased to offer for sale this well-presented two bedroom first floor apartment, located within the popular Chiswell Court development.

The property is ideally positioned for convenience, being just a 20 minute walk from Watford Junction Station, while also benefiting from a quieter setting within well kept communal gardens. A range of local shops, amenities and transport links are all close by.

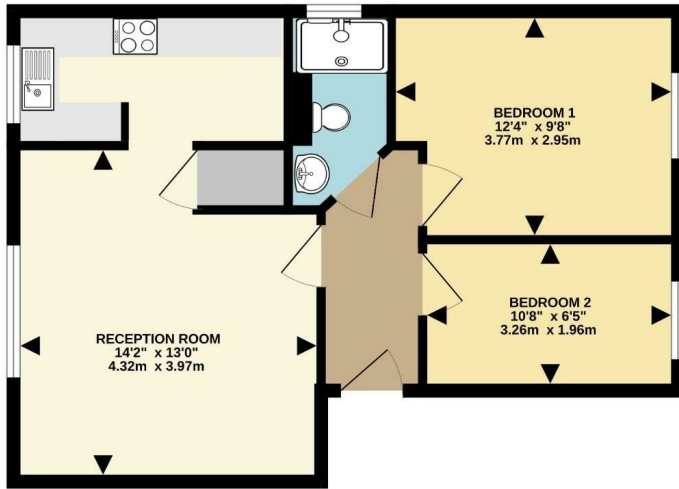
The apartment itself is immaculately presented throughout and offers comfortable, practical living space, making it a great option for first time buyers, downsizers or investors. Residents also benefit from off road parking and attractive communal grounds, which are well maintained and provide a pleasant setting for the development.

- 2 Bedroom Flat
- Off Road Parking
- 92 Years Remaining On Lease
- Council Tax Band C
- Excellent Access To Amenities
- First Floor
- Immaculately Re-Furnished
- Well Located For The Station
- Well Kept Communal Gardens



Floor Plan

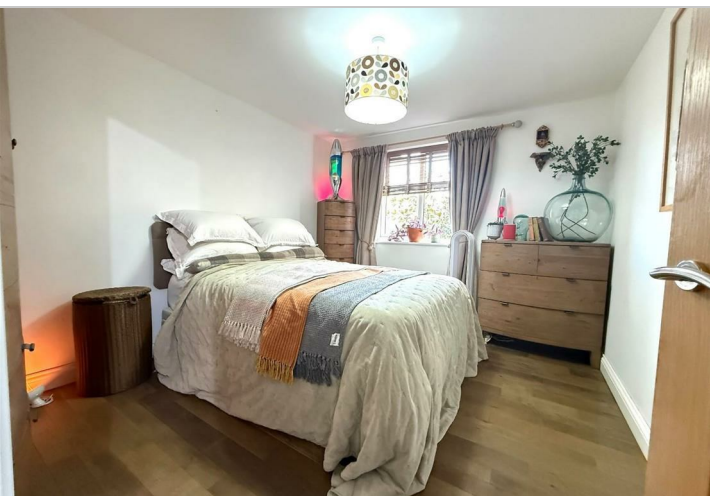
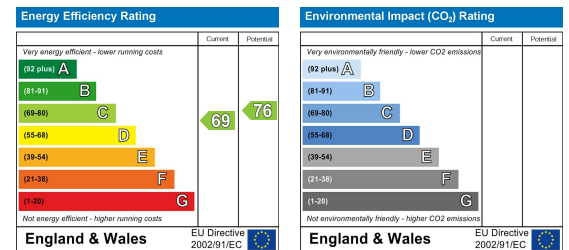
498 sq.ft. (46.3 sq.m.) approx.



Area Map



Energy Efficiency Graph



These particulars, whilst believed to be accurate are set out as a general outline only for guidance and do not constitute any part of an offer or contract. Intending purchasers should not rely on them as statements of representation of fact, but must satisfy themselves by inspection or otherwise as to their accuracy. No person in this firm's employment has the authority to make or give any representation or warranty in respect of the property.