



LANG TOWN
& COUNTRY

10 Westway, Hooe, Plymouth, Devon, PL9 9RL



Price £415,000



Situated in the ever-popular village of Hooe, this substantial three-bedroom semi-detached home has been extensively renovated throughout over the past three years, creating a stylish and contemporary property ready for immediate occupation.

Upon entering, a welcoming entrance hallway leads directly into the impressive open-plan kitchen/dining space, which forms the heart of the home. Beautifully designed with modern cabinetry, fully integrated appliances and a large central island/breakfast bar, this versatile space is ideal for both everyday family living and entertaining guests. Leading off the kitchen/diner is a comfortable and inviting lounge featuring a characteristic bay window. To the first floor are three generously proportioned bedrooms, all well-presented, alongside a modern four-piece family bathroom suite comprising a bath, separate shower, wash hand basin and toilet.

Externally, the property continues to impress with a generous south-facing rear garden, complete with a decked seating area, providing an excellent space for outdoor dining and enjoying the warmer months. To the front, the property benefits from a private driveway and a single garage, offering ample off-road parking and additional storage.

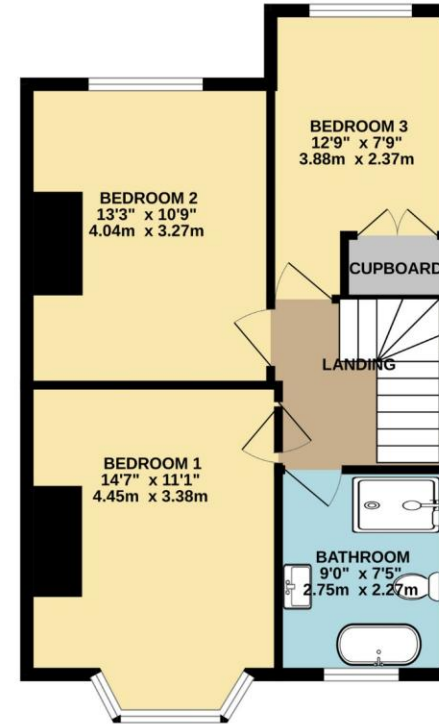
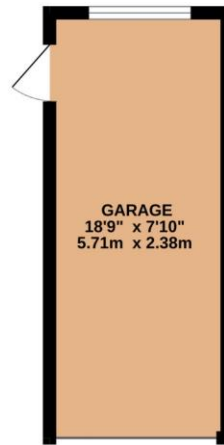
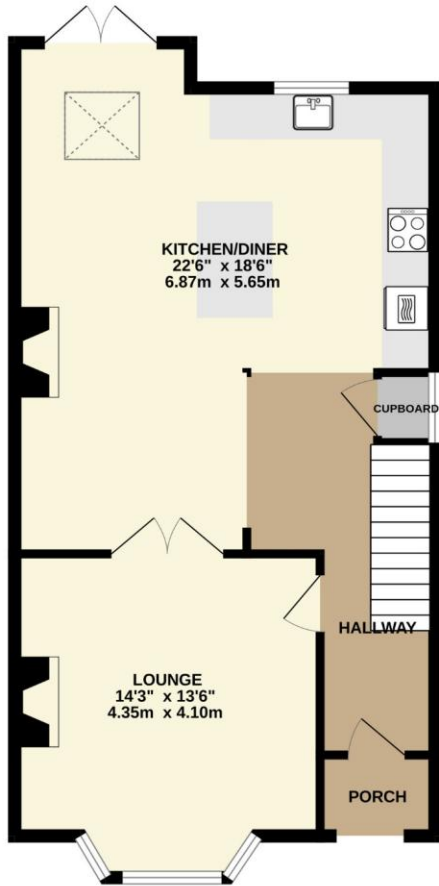
Ideally positioned close to Hooe Green and the South West Coast Path, the property enjoys easy access to beautiful coastal walks, local amenities and excellent transport links, making it a superb choice for families, professionals and those seeking a property close to the coast.

There are a wide array of amenities situated close by which include the picturesque coastline of Mount Batten, Jennycliff and Bovisand Beaches and easy access to the South West coastal footpath. There is a well-regarded primary school, general store/newsagent, and numerous restaurants and public houses. Regular transport links provide access to Plymstock and the vibrant City Centre of Plymouth. Mount Batten offers a water taxi service providing access to the historic Barbican waterfront. Further recreational facilities include Fort Stamford, Staddon Heights Golf Course and the Mount Batten Water Sports Centre.



To view this property call Lang Town & Country Estate Agents on **01752 456000**.





TOTAL FLOOR AREA: 1302 sq.ft. (121.0 sq.m.) approx.
Measurements are approximate. Not to scale. Illustrative purposes only
Made with Metropix ©2026



Lang Town & Country
6 The Broadway
Plymstock
Plymouth
PL9 7AU
Tel: 01752 456000
Email: plymstockoffice@langtownandcountry.com

Lang Town & Country endeavour to ensure the accuracy of property details produced and displayed, we have not tested any apparatus, equipment, fixtures, fittings or services and so cannot verify that they are connected, in working order or fit for purpose. A buyer must check the availability of any property and make an appointment to view before embarking on any journey to see a property.

